

IMPACT SOCKETS

EN

DE

FR



Automotive | Construction | Industry | Assembly | Offshore
Automotive | Bau | Industrie | Montage | Off-Shore
Automobile | BTP | Industrie | Assemblage | Offshore

2022

CONTENTS

1/4"	IMPACT SOCKETS FOR SCREWDRIVERS
	6-point & tap holding sockets 13

1/4"	IMPACT SOCKETS
	6-point normal 14
	6-point deep 14
	Torx® 15
	Surface drive 16
Universal joint sockets..... 16	

3/8"	6-point normal 17
	6-point deep 17-18
	12-point normal 18
	12-point deep 18
	Surface drive 19
	Torx® 19-20
	Triple square 22
	Universal joints 21-22
	Ribe driver 23
	Tap holding sockets 23

1/2"	4-point / double square 23
	6-point normal 24
	6-point deep 24-25
	12-point normal 27
	12-point deep 27
	Surface drive 28
	Torx® 28-29
	Universal joints 30
	Triple square 31
	Ribe driver 31
	Tap holding sockets 31
	Stud bolt setters 32

3/4"	4-point 34
	6-point normal 34
	6-point deep 35
	Stud bolt setters 34
	8-point 36
	12-point normal 36
	12-point deep 37
	Torx® 37

1"	4-point normal 38
	6-point normal 38
	6-point deep 39
	8-point normal 40
	12-point normal 40
	12 point deep 41
	Hex driver socket..... 41

1 1/2"	6-point normal 42
	6-point deep 42
	Hex driver socket..... 43

2 1/2"	6-point normal 43
---------------	-------------------------

3/8"	ADAPTORS
	Extension bars 46-47
	Lock pin retainer 46
	Universal joints 47
	Impact bit holder 47
	Hex drivers and triple square 48
Quick-change adaptors 49	
Pin & Ring 50	

3/8"	SLEEVE DRIVE
	6-point normal 52
	6-point long 52-53
	6-point deep 53
	Torx® 53
Hex driver socket..... 53	

1/2"	6-point normal 54
	6-point long 54
	6-point deep 55
	Torx® 55
	Hex driver socket..... 55
	Stud bolt setters 55

3/4"	6-point normal 56
	Hex driver socket..... 56
	Torx® 56
	Extensions 56
	Quickchange adaptors 57
	Bit holders 57

1"	IMPACT SOCKETS SETS
	Impact Socket Sets 58-61
Torque sockets & specials..... 62	

IMPACT SOCKETS

ACTION is the worlds' largest manufacturer of impact sockets. Its impact sockets are durable, of high quality and competitively priced and manufactured from the best materials (chrom-molybdenum alloy steel). The ACTION impact sockets can be used for any kind of power tools; air, electric, hydraulic or battery, and for any kind of application ranging from car repair shops to the car industry. At Rami Yokota we have a very large continuous stock available, ranging from 1/4" drive to 2 1/2" drive.



SQUARE DRIVE
ACTION impact sockets are available for square drives of 1/4" up to 2 1/2". The shape of the square drive of these sockets is characterized by rounded off corners, so the square drive of the powertool has the best possible fit. This means that the torque is transmitted on a large area, not only the corners of the socket. This results in good endurance of the sockets and a long lifetime.



6-POINT SOCKETS
The 6-point sockets manufactured by ACTION also have rounded off corners. The rounded corners allow some space for the points of the bolt head, so the torque is transmitted on the flanks of the bolt head, giving you better results. Driving the flanks also means that the wear on the points of the bolt head or nut is reduced. For 12 point sockets, a similar geometry is used.



SURFACE DRIVE SOCKETS
Surface drive sockets are designed to drive only the center of the flank of a bolthead or nut. The surface drive sockets should be recommended for use on nuts with points that have worn off, but also for nuts of softer materials and polished nuts and boltheads.



WARNING!

The European regulation, directive of machinery 2006/42/EG and EN/ISO 11148-6 states that only IMPACT SOCKETS are to be used on power tools. All Action impact sockets are manufactured according to DIN 3121 and DIN 3129. Universal joints, reducing adaptors and thin wall sockets are supplied without warranty. Always wear safety goggles when using impact equipment. Do not hold the socket while in use.

NOTE: If you can't find the proper dimensions please contact us.

INHALT

1/4"	KRAFTSTECKSCHLÜSSEL FÜR DREHSCHRAUBER
	6-Kant & Gewindebohrerhalter 13

1/4"	KRAFTSTECKSCHLÜSSEL
	6-Kant normal 14
	6-Kant tief 14
	Torx® 15
	Surface drive 16
	Kugelgelenkschlüssel 16

3/8"	6-Kant normal 17
	6-Kant tief 17-18
	12-Kant normal 18
	12-Kant tief 18
	Surface drive 19
	Torx® 19-20
	Aussen-XZN 22
	Kugelgelenkschlüssel 21-22
	Ribe Profil 23
	Gewindebohrerhalter 23

1/2"	4-Kant / 8-Kant 23
	6-Kant normal 24
	6-Kant tief 24-25
	12-Kant normal 27
	12-Kant tief 27
	Surface drive 28
	Torx® 28-29
	Kugelgelenkschlüssel 30
	Aussen XZN 31
	Ribe Profil 31
	Gewindebohrerhalter 31
	Stehbolzensetzer 32

3/4"	4-Kant 34
	6-Kant normal 34
	6-Kant tief 35
	Stehbolzensetzer 34
	8-Kant 36
	12-Kant normal 36
	12-Kant tief 37
	Torx® 37

1"	4-Kant normal 38
	6-Kant normal 38
	6-Kant tief 39
	8-Kant normal 40
	12-Kant normal 40
	12-Kant tief 41
	Aussen-6-Kant (Inbus) 41

1 1/2"	6-Kant normal 42
	6-Kant tief 42
	Aussen-6-Kant (Inbus) 43

2 1/2"	6-Kant normal 43
	VERBINDUNGSTEILE

Verlängerungen 46-47
Verlängerung Wobble 46
Kugelgelenkschlüssel 47
Verbindungsteil mit Außenvierkant 47
Sechskantbits & XZN bits 48
Schnelwechselhalter 49
Ring, Stift und Federring 50

3/8"	SPINDELGEFÜHRTE STECKSCHLÜSSEL
	6-Kant normal 52
	6-Kant lang 52-53
	6-Kant tief 53
	Torx® 53
	Aussen-6-Kant (Inbus) 53

1/2"	6-Kant normal 54
	6-Kant lang 54
	6-Kant tief 55
	Torx® 55
	Aussen-6-Kant (Inbus) 55
	Stehbolzensetzer 55

3/4"	6-Kant normal 56
	Stehbolzensetzer 56
	Torx® 56
	Verlängerungen 56
	Schnelwechselhalter 57
	Spindelgeführte Bithalter 57

SETS KRAFTSTECKSCHLÜSSEL
Kraftsteckschlüsselsets 58-61
Torsionkraftsteckschlüssel & Specials 62

KRAFTSTECKSCHLÜSSEL

Action ist der weltweit größte Hersteller von Kraftsteckschlüsseln. Die Kraftsteckschlüssel sind langlebig, qualitativ hochwertig, günstig und aus den besten Materialien (Chrom-Molybdän-Stahllegierung) hergestellt. Die Action Kraftsteckschlüssel können für alle Arten von Werkzeugen verwendet werden: Druckluft, elektrisch, hydraulisch oder akkubetrieben und eignen sich für jede Anwendung, von der Reifenwerkstatt bis zur Automobilindustrie. Bei Rami Yokota verfügen wir jederzeit über einen großen Lagerbestand, der von 1/4" Antrieb bis hin zu 2 1/2" Antrieb reicht.



VIERKANTANTRIEB

Action Kraftsteckschlüssel sind lieferbar für Vierkanttrieb von 1/4" bis 2 1/2". Die Form des Vierkanttriebs dieser Kraftsteckschlüssel ist in den Ecken nach außen abgerundet, wodurch der Antriebsvierkant des Schlagschraubers ausgezeichnet passt. Das bedeutet, dass das Drehmoment weitestgehend übertragen wird, nicht nur in den Ecken des Kraftsteckschlüssels. Das verlängert die Lebensdauer der Kraftsteckschlüssel und Schlagschrauber erheblich.



SECHSKANT-KRAFTSTECKSCHLÜSSEL

Die von Action hergestellten Sechskant-Kraftsteckschlüssel haben auch abgerundete Ecken. Die abgerundeten Ecken haben hier das Ziel, den Ecken des Sechskants Platz zu lassen, damit die Kraft auf die Flanken des Schraubenkopfes übertragen wird, was zu einer verbesserten Leistung führt. Durch den Flankenantrieb auf den Schraubenkopf oder die Mutter wird Verschleiß reduziert. Das gilt auch für die Zwölfkantkraftsteckschlüssel.



SURFACE-DRIVE-STECKSCHLÜSSEL

Surface-Drive-Steckschlüssel wurden entwickelt, um nur die Mitte der Schraube oder Mutter anzutreiben. Die Surface-Drive-Steckschlüssel werden empfohlen für die Verwendung von Nüssen mit abgenutzten Ecken, aber auch bei Nüssen aus weicherem Material bzw. polierten Nüssen und Schrauben.



VORSICHT!

Richtlinie für Maschinen 2006/42/EG und EN/ISO 11148-6 besagt, dass nur Kraftsteckschlüsseinsätze auf Schlagschraubern eingesetzt werden sollen. Alle Action Kraftsteckschlüssel sind gemäß DIN 3121 und DIN 3129 hergestellt. Alle Kugelgelenke und dünnwandigen Kraftsteckschlüssel werden ohne Garantie geliefert.

Sollten Sie die richtigen Typen oder Abmessungen bzw. Schlüsselweiten in diesem Katalog nicht finden, bitte sprechen Sie uns hierzu an!

SOMMAIRE

1/4"	DOUILLES À CHOC POUR VISSEUSES 6-pans & porte-taraud 13	1 1/2"	6-pans normales..... 42 6-pans profonde 42 Empreinte 6-pans (inbus) 43
1/4"	DOUILLES À CHOC 6-pans normales..... 14 6-pans profonde 14 Torx® 15 Surface drive 16 Cardan 6-pans 16	2 1/2"	6-pans normales..... 43
3/8"	6-pans normales..... 17 6-pans profonde 17-18 12-pans normales 18 12-pans profonde..... 18 Surface drive 19 Torx® 19-20 Carré triple..... 22 Cardan 21-22 Profil Ribe 23 Douille porte-taraud..... 23	ADAPTATEURS Rallonges 46-47 Rallonges wobble 46 Cardans à clique 47 Adaptateurs d'impact 47 Embouts hexagonal & carre triple 48 Mandrins à embouts 49 Joint torique clavette 50	
1/2"	4-pans / douille octogonal..... 23 6-pans normales..... 24 6-pans profonde 24-25 12-pans normales 27 12-pans profonde..... 27 Surface drive 28 Torx® 28-29 Cardan 30 Carré triple 31 Profil Ribe 31 Douille porte-taraud..... 31 Prise goujon..... 32	DOUILLES GUIDÉES (SLEEVE DRIVE) 6-pans normale 52 6-pans longue..... 52-53 6K-pans profonde 53 Torx® 53 Empreinte 6-pans (inbus) 53	
3/4"	4-pans normales..... 34 6-pans normales..... 34 6-pans profonde 35 Prise goujon..... 34 8-pans normales..... 36 12-pans normales 36 12-pans profonde..... 37 Torx® 37	3/8"	6K normaal 54 6K lang..... 54 6K diep 55 Torx® 55 Empreinte 6-pans (inbus) 55 Prise goujon..... 55
1"	4-pans normales..... 38 6-pans normales..... 38 6-pans profonde 39 8-pans normales..... 40 12-pans normales 40 12-pans profonde..... 41 Empreinte 6-pans (inbus) 41	1/2"	6K normaal 56 Empreinte 6-pans (inbus) 56 Torx® 56 Prise goujon..... 56 Adaptateurs à changement rapide ... 57 Douilles guidées adaptateurs embout 57
		3/4"	6K normaal 56 Empreinte 6-pans (inbus) 56 Torx® 56 Prise goujon..... 56 Adaptateurs à changement rapide ... 57 Douilles guidées adaptateurs embout 57
			JEUX DE DOUILLES À CHOC Jeux de douilles à choc 58-61 Barres limiteur de couple & spéciaux 62

DOUILLES À CHOC

Action est le plus grand fabricant mondial de douilles à choc. Les douilles sont durables, de haute qualité, d'un prix compétitif et fabriqués à partir des meilleurs matériaux (acier allié au chrome-molybdène). Les clés à chocs Action peuvent être utilisées avec tous les types d'outils : à air comprimé, électriques, hydrauliques ou à batterie et conviennent à toutes les applications, des garages de pneus à l'industrie automobile. Chez Rami Yokota, nous disposons en permanence d'un stock important, allant de l'entraînement 1/4" à l'entraînement 2 1/2".



CARRÉ D'ENTRAÎNEMENT

Les douilles impact Action sont disponibles avec des carrés d'entraînement de taille 1/4" jusque 2 1/2". La forme du carré d'entraînement de ces douilles est caractérisée par les coins arrondis, ainsi le carré d'entraînement de la visseuse a le meilleur positionnement possible. Ceci entraîne un couple de serrage transmis sur une large surface et non seulement dans les coins de la douille. Il résulte ainsi une bonne endurance des douilles et une longue durée de vie.



DOUILLES 6-PANS

Les douilles 6-pans fabriquées par Action ont aussi des coins arrondis. Les coins arrondis permettent de l'espace pour la tête de vis 6-pans, ainsi le couple de serrage est transmis sur les flancs de la tête de vis, donnant de meilleurs résultats. L'entraînement des flancs signifie aussi que l'usure des flancs sur les pans de la tête de vis ou du boulon est réduite. Pour les douilles 12-pans une géométrie similaire est utilisée.



DOUILLES SURFACE DRIVE

Les douilles Surface Drive sont conçues pour entraîner seulement le centre des flancs de la tête de vis ou du boulon. Les douilles Surface Drive doivent être recommandées pour une utilisation avec des boulons à pans usés, mais aussi pour des boulons avec des matériaux plus tendres et des têtes de vis ou boulons polis.



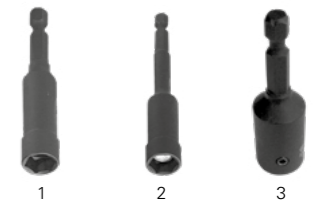
ATTENTION!

Toujours porter des lunettes de sécurité en utilisant des outils à chocs. Ne pas tenir la douille pendant l'utilisation. Toutes les douilles à chocs Action sont usinées selon les normes DIN 3121 et DIN 3129. Les douilles à cardan et à paroi mince sont fournies sans garantie. La réglementation européenne, Directive des machines 2006/42/EG et EN/ISO 11148-6, statue que seules les douilles à chocs sont à utiliser avec des visseuses motorisées.

Att.: Si vous ne pouvez trouver les dimensions, type et tailles requises pour votre application dans ce catalogue, contactez nous!

1/4" HEX DRIVE FOR SCREWDRIVERS

SECHSKANT FÜR DREHSCHRAUBER | 6-PANS POUR VISSEUSES



6-POINT NORMAL
6-KANT NORMAL
6-PANS NORMALE

1

Type	mm	Drawing	D1 mm	L mm	L1 mm	-
Metrical · Metrisch · Métriques						
DO697B0S04	4	AH	8	55	4,5	-
DO697B0S06	6	AH	10	55	4,5	-
DO697B0S07	7	AH	11	55	5	-
DO697B0S08	8	AH	12	55	5	-
DO697B0S10	10	AH	14	55	6,5	-
DO697B0T06	6	AH	10	75	4,5	-
DO697B0T07	7	AH	11	75	4,5	-
DO697B0T08	8	AH	12	75	4,5	-
DO697B0T10	10	AH	14	75	5,5	-
DO697B0T12	12	AH	17	75	5,5	-
DO697B0T13	13	AH	18	75	5,5	-
DO697B0T14	14	AH	19	75	5,5	-
DO697B0W12	12	AH	17	200	5,5	-
DO697B0W14	14	AH	19	200	5,5	-

6-POINT DEEP MAGNETIC
6-KANT TIEF MAGNETISCH
6-PANS PROFONDE MAGNÉTIQUE

2

Type	mm	Drawing	D1 mm	L mm	L1 mm	-
Metrical · Metrisch · Métriques						
DO697B6006	6	CH	10	75	4,5	-
DO697B7006	6	CH	10	100	4,5	-
DO697B7008	8	CH	12	100	4,5	-
DO697B7010	10	CH	14	100	5,5	-
DO697B7012	12	CH	17	100	5,5	-
DO697B7013	13	CH	18	100	5,5	-
DO697B7014	14	CH	19	100	5,5	-
DO697B8006	6	CH	10	150	4,5	-
DO697B8008	8	CH	12	150	4,5	-
DO697B8010	10	CH	14	150	5,5	-
DO697B8012	12	CH	17	150	5,5	-
DO697B8013	13	CH	18	150	5,5	-
DO697B8014	14	CH	19	150	5,5	-
DO697B9006	6	CH	10	200	4,5	-
DO697B9008	8	CH	12	200	4,5	-
DO697B9010	10	CH	14	200	5,5	-
DO697B9012	12	CH	17	200	5,5	-
DO697B9013	13	CH	18	200	5,5	-
DO697B9014	14	CH	19	200	5,5	-

6-POINT MAGNETIC
6-KANT MAGNETISCH
6-PANS MAGNÉTIQUE

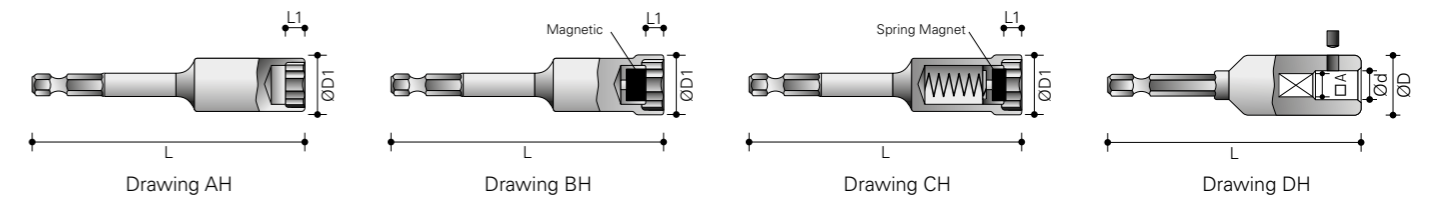
2

Type	mm	Drawing	D1 mm	L mm	L1 mm	-
Metrical · Metrisch · Métriques						
DO697B0M06	6	BH	10	55	4,5	-
DO697B0M07	7	BH	11	55	4,5	-
DO697B0M08	8	BH	12	55	4,5	-
DO697B0M10	10	BH	14	55	5,5	-
DO697B0M11	11	BH	16	55	5,5	-
DO697B0M12	12	BH	17	55	5,5	-
DO697B0M13	13	BH	18	55	5,5	-
DO697B0M14	14	BH	19	55	5,5	-
DO697B0N10	10	BH	14	75	5,5	-
DO697B0N12	12	BH	17	75	5,5	-
DO697B0P06	6	BH	10	100	4,5	-
DO697B0P07	7	BH	11	100	4,5	-
DO697B0P08	8	BH	12	100	4,5	-
DO697B0P10	10	BH	14	100	5,5	-
DO697B0P12	12	BH	17	100	5,5	-
DO697B0P13	13	BH	18	100	5,5	-
DO697B0P14	14	BH	19	100	5,5	-
DO697B0P17	17	BH	23	100	5,5	-
DO697B0Q10	10	BH	14	150	5,5	-
DO697B0R07	7	BH	11	200	4,5	-
DO697B0R10	10	BH	14	200	5,5	-

TAP HOLDERS
GEWINDEBOHRERHALTER
DOUILLE PORTE-TARAUD

3

Type	A mm	Drawing	Ø d mm	Ø D mm	L mm	-
Metrical · Metrisch · Métriques						
DO63A65001	3,4	DH	4,5	14	55	-
DO63A65002	4,9	DH	6	15	55	-
DO63A65003	5,5	DH	7	16	55	-
DO63A65004	6,2	DH	8	17	60	-
DO63A65005	7	DH	9	18	70	-
DO63A65006	8	DH	10	19	70	-
DO63A65007	9	DH	11	20	70	-
DO63A65008	9	DH	12	21	70	-
DO63A65009	11	DH	14	23	75	-



1/4" SQUARE DRIVE

VIERKANT | CARRÉ



6-POINT NORMAL 6-KANT NORMAL 6-PANS NORMALE

Type	Drawing	D1 mm	D2 mm	L mm	L2 mm	
Metrical · Metrisch · Métriques						
DO0014-0-004	4	A	7,6	13	23	4
DO0014-0-0045	4,5	A	8,2	13	23	5
DO0014-0-005	5	A	8,8	13	23	5
DO0014-0-0055	5,5	A	9,5	13	23	5
DO0014-0-006	6	A	10	13	23	6
DO0014-0-007	7	A	11,3	13	23	6
DO0014-0-008	8	A	12,5	13	23	7
DO0014-0-009	9	A	13,8	13	23	7
DO0014-0-010	10	C	15	13	23	7
DO0014-0-011	11	C	16,3	13	23	8
DO0014-0-012	12	C	17	13	23	8
DO0014-0-013	13	C	18,8	13	23	8
DO0014-0-014	14	C	20	13	23	8
DO0014-0-015	15	C	21	13	23	8

6-POINT NORMAL 6-KANT NORMAL 6-PANS NORMALE

Type	Drawing	D1 mm	D2 mm	L mm	L2 mm	
SAE · Zoll · Pouce						
DO0014-0-3/16	3/16"	A	8,5	13	23	5
DO0014-0-1/4	1/4"	A	10,3	13	23	6
DO0014-0-5/16	5/16"	A	12,5	13	23	7
DO0014-0-3/8	3/8"	C	15	13	23	7
DO0014-0-7/16	7/16"	C	16,3	13	23	8
DO0014-0-1/2	1/2"	C	18,8	13	23	8

6-POINT DEEP 6-KANT TIEF 6-PANS PROFONDE

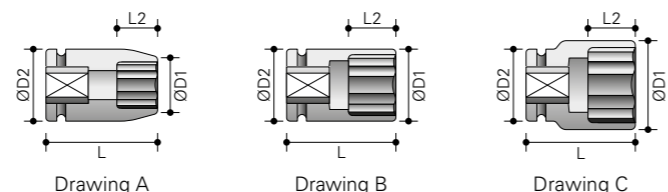
Type	Drawing	D1 mm	D2 mm	L mm	L2 mm	
Metrical · Metrisch · Métriques						
DO0014-1-004	4	A	7,6	13	50	4
DO0014-1-045	4,5	A	8,2	13	50	6
DO0014-1-005	5	A	8,8	13	50	6
DO0014-1-006	6	A	10	13	50	7
DO0014-1-007	7	A	11,3	13	50	7
DO0014-1-008	8	A	12,5	13	50	9
DO0014-1-009	9	C	13,8	13	50	9
DO0014-1-010	10	C	15	13	50	9
DO0014-1-011	11	C	16,3	13	50	9
DO0014-1-012	12	C	17	13	50	9
DO0014-1-013	13	C	18,8	13	50	9
DO0014-1-014	14	C	20	13	50	9
DO0014-1-015	15	C	21	13	50	9

6-POINT NORMAL MAGNETIC 6-KANT NORMAL MAGNETISCH 6-PANS NORMALE MAGNÉTIQUE

Type	Drawing	D1 mm	D2 mm	L mm	L2 mm	
Metrical · Metrisch · Métriques						
DO6050P050	5	A	8,8	13	23	3
DO6050P055	5,5	A	9,5	13	23	3
DO6050P060	6	A	10	13	23	3
DO6050P070	7	A	11,3	13	23	3
DO6050P080	8	A	12,5	13	23	3
DO6050P090	9	C	13,8	13	23	4
DO6050P100	10	C	15	13	23	4
DO6050P110	11	C	16,3	13	23	5
DO6050P120	12	C	17	13	23	5
DO6050P130	13	C	18,8	13	23	5
DO6050P140	14	C	20	13	23	6
DO6050P150	15	C	21	13	23	6
DO0014-1-015	15	C	21	13	50	9

6-POINT DEEP MAGNETIC 6-KANT TIEF MAGNETISCH 6-PANS PROFONDE MAGNÉTIQUE

Type	Drawing	D1 mm	D2 mm	L mm	L2 mm	
Metrical · Metrisch · Métriques						
DO6050R050	5	A	8,8	13	50	3
DO6050R055	5,5	A	9,5	13	50	3
DO6050R060	6	A	10	13	50	3
DO6050R070	7	A	11,3	13	50	3
DO6050R080	8	A	12,5	13	50	3
DO6050R090	9	C	13,8	13	50	4
DO6050R100	10	C	15	13	50	4
DO6050R110	11	C	16,3	13	50	5
DO6050R120	12	C	17	13	50	5
DO6050R130	13	C	18,8	13	50	5
DO6050R140	14	C	20	13	50	6
DO6050R150	15	C	21	13	50	6



1/4" SQUARE DRIVE

VIERKANT | CARRÉ



HEX DRIVER (INBUS) AUSSEN-6-KANT (INBUS) EMPREINTE-6-PANS (INBUS)

Type	Drawing	D2 mm	L mm	L1 mm	-	
Metrical · Metrisch · Métriques						
DO64805025	2,5	D	13	35	4	-
DO64805030	3	D	13	35	6	-
DO64805040	4	D	13	35	6	-
DO64805050	5	D	13	35	6	-
DO64805060	6	D	13	35	8	-
DO64805070	7	D	13	35	8	-
DO64805080	8	D	13	35	8	-
DO64805090	9	D	13	35	10	-
DO64805100	10	D	13	35	10	-

TORX® INTERNAL TORX® INNEN TORX® INTÉRIEURE

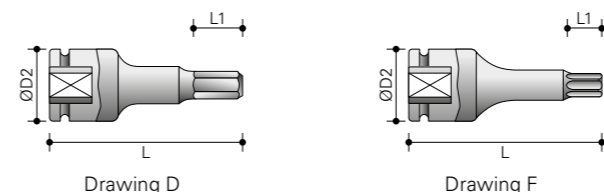
Type	Drawing	D2 mm	L mm	L1 mm	-	
Metrical · Metrisch · Métriques						
DO64701005	T5	F	13	35	2	-
DO64701006	T6	F	13	35	2	-
DO64701007	T7	F	13	35	2	-
DO64701008	T8	F	13	35	2	-
DO64701009	T9	F	13	35	2	-
DO64701010	T10	F	13	35	2,8	-
DO64701015	T15	F	13	35	2,8	-
DO64701020	T20	F	13	35	2,8	-
DO64701025	T25	F	13	35	3	-
DO64701027	T27	F	13	35	3	-
DO64701030	T30	F	13	35	3,8	-

Torx® is a trademark of Textron.

TORX® TAMPER RESISTANT INTERNAL TORX® TAMPER RESISTANT INNEN TORX® TAMPER RESISTANT INTÉRIEURE

Type	Drawing	D2 mm	L mm	L1 mm	-	
DO64706008	T8	F	13	35	2,0	-
DO64706009	T9	F	13	35	2,0	-
DO64706010	T10	F	13	35	2,8	-
DO64706015	T15	F	13	35	2,8	-
DO64706020	T20	F	13	35	2,8	-
DO64706025	T25	F	13	35	3,0	-
DO64706027	T27	F	13	35	3,0	-
DO64706030	T30	F	13	35	3,8	-

Torx® is a trademark of Textron.



TORX® EXTERNAL TORX® AUSSEN TORX® EXTÉRIEURE

Type	Drawing	D1 mm	D2 mm	L mm	L2 mm	
DO63300004	E4	A	7,2	13	25	4
DO63300005	E5	A	8	13	25	4,5
DO63300006	E6	A	9	13	25	5
DO63300007	E7	A	9,5	13	25	6
DO63300008	E8	A	10	13	25	6
DO63300010	E10	A	12,5	13	25	7,5
DO63300011	E11	B	13	13	25	8
DO63300012	E12	B	14,5	14,5	25	8,5

Torx® is a trademark of Textron.

TORX® THIN WALL EXTERNAL TORX® DÜNNWANDIG AUSSEN TORX® À PAROI MINCE EXTÉRIEURE

Type	Drawing	D1 mm	D2 mm	L mm	L2 mm	
DO63305004	E4	A	6,5	13	25	4
DO63305005	E5	A	7,5	13	25	4,5
DO63305006	E6	A	8,5	13	25	5
DO63305007	E7	A	9	13	25	6
DO63305008	E8	A	9,8	13	25	6
DO63305010	E10	A	12	13	25	6,5
DO63305011	E11	A	12,7	13	25	8
DO63305012	E12	A	14	14,5	25	8,5

Thin wall sockets are not included in the Action warranty.
Torx® is a trademark of Textron.

1/4" SQUARE DRIVE

VIERKANT | CARRÉ



SURFACE DRIVE NORMAL SURFACE DRIVE NORMAL SURFACE DRIVE NORMALE

Type	mm	Drawing	D1 mm	D2 mm	L mm	L2 mm
Metrical · Metrisch · Metriques						
DO63405040	4	A	7,6	13	23	4
DO63405045	4,5	A	8,2	13	23	5
DO63405050	5	A	8,8	13	23	5
DO63405055	5,5	A	9,5	13	23	5
DO63405060	6	A	10	13	23	6
DO63405070	7	A	11,3	13	23	6
DO63405080	8	A	12,5	13	23	7
DO63405090	9	C	13,8	13	23	7
DO63405100	10	C	15	13	23	7
DO63405110	11	C	16,3	13	23	8
DO63405120	12	C	17	13	23	8
DO63405130	13	C	18,8	13	23	8
DO63405140	14	C	20	13	23	8
DO63405150	15	C	21	13	23	8

SURFACE DRIVE DEEP SURFACE DRIVE TIEF SURFACE DRIVE PROFONDE

Type	mm	Drawing	D1 mm	D2 mm	L mm	L2 mm
Metrical · Metrisch · Metriques						
DO63407040	4	A	7,6	13	50	4
DO63407045	4,5	A	8,2	13	50	6
DO63407050	5	A	8,8	13	50	6
DO63407055	5,5	A	9,5	13	50	6
DO63407060	6	A	10	13	50	7
DO63407070	7	A	11,3	13	50	7
DO63407080	8	A	12,5	13	50	9
DO63407090	9	C	13,8	13	50	9
DO63407100	10	C	15	13	50	9
DO63407110	11	C	16,3	13	50	9
DO63407120	12	C	17	13	50	9
DO63407130	13	C	18,8	13	50	9
DO63407140	14	C	20	13	50	9
DO63407150	15	C	21	13	50	9

UNIVERSAL JOINT SOCKETS 6-POINT KUGELGELENKSCHLÜSSEL 6-KANT CARDAN 6-PANS NORMALE

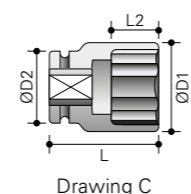
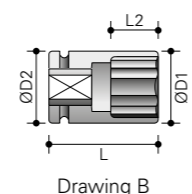
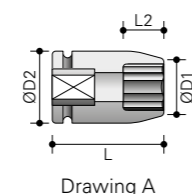
Type	mm	Drawing	D1 mm	D2 mm	L mm	L2 mm
Metrical · Metrisch · Metriques						
DO62500050	5	E	8,8	15	43	5
DO62500055	5,5	E	9,5	15	43	6
DO62500060	6	E	10	15	43	6
DO62500070	7	E	11,5	15	43	8
DO62500080	8	E	12,5	15	43	8
DO62500090	9	E	14	15	43	8
DO62500100	10	E	15	15	43	8
DO62500110	11	E	16,5	15	43	8
DO62500120	12	E	16,8	16	48	8
DO62500130	13	E	18,8	16	48	8
DO62500140	14	E	19,8	16	48	8
DO62500150	15	E	20,8	16	48	8

Universal joint sockets are not included in the Action warranty.



PIN & RING | RING & STIFT | JOINT TORIQUE CLAVETTE

Type
DO1014-0-000



3/8" SQUARE DRIVE

VIERKANT | CARRÉ



6-POINT NORMAL 6-KANT NORMAL 6-PANS NORMALE

Type	mm	Drawing	D1 mm	D2 mm	L mm	L2 mm
Metrical · Metrisch · Metriques						
DO1038-0-006	6	A	11	19	30	4
DO1038-0-007	7	A	12,5	19	30	8
DO1038-0-008	8	A	14	19	30	8
DO1038-0-009	9	A	15	19	30	8
DO1038-0-010	10	A	16	19	30	8
DO1038-0-011	11	A	17,5	19	30	9
DO1038-0-012	12	B	19	19	30	9
DO1038-0-013	13	A	20	22	30	9
DO1038-0-014	14	A	21	22	30	9
DO1038-0-015	15	B	22	22	30	11
DO1038-0-016	16	C	24	22	30	11
DO1038-0-017	17	C	25	22	30	11
DO1038-0-018	18	C	26	22	30	11
DO1038-0-019	19	C	27,5	22	30	11
DO1038-0-020	20	C	28	22	30	12
DO1038-0-021	21	C	30	22	30	13
DO1038-0-022	22	C	32	23	30	13
DO1038-0-024	24	C	34	23	30	13

6-POINT NORMAL 6-KANT NORMAL 6-PANS NORMALE

Type	mm	Drawing	D1 mm	D2 mm	L mm	L2 mm
SAE · Zoll · Pouce						
DO1038-0-5/16	5/16"	A	12,5	19	30	8
DO1038-0-3/8	3/8"	A	14,5	19	30	8
DO1038-0-7/16	7/16"	A	17	19	30	9
DO1038-0-1/2	1/2"	B	19	19	30	9
DO1038-0-9/16	9/16"	B	20	20	30	9
DO1038-0-5/8	5/8"	B	24	24	30	11
DO1038-0-11/16	11/16"	B	24	24	30	11

6-POINT NORMAL MAGNETIC 6-KANT NORMAL MAGNETISCH 6-PANS NORMALE MAGNÉTIQUE

Type	mm	Drawing	D1 mm	D2 mm	L mm	L2 mm
Metrical · Metrisch · Metriques						
DO6051P006	6	A	11,5	19	30	3
DO6051P007	7	A	12,5	19	30	3
DO6051P008	8	A	14	19	30	3
DO6051P009	9	A	15	19	30	4
DO6051P010	10	A	16,5	19	30	4
DO6051P011	11	A	17,5	19	30	5
DO6051P012	12	B	19	19	30	5
DO6051P013	13	A	20	22	30	5
DO6051P014	14	A	21,5	22	30	6
DO6051P015	15	B	22	22	30	6
DO6051P016	16	C	24	22	30	6
DO6051P017	17	C	25	22	30	6
DO6051P018	18	C	26	22	30	7
DO6051P019	19	C	27,5	22	30	7

6-POINT DEEP MAGNETIC 6-KANT TIEF MAGNETISCH 6-PANS PROFONDE MAGNÉTIQUE

Type	mm	Drawing	D1 mm	D2 mm	L mm	L2 mm
Metrical · Metrisch · Metriques						
DO6051R006	6	A	11,5	19	55	3
DO6051R007	7	A	12,5	19	55	3
DO6051R008	8	A	14	19	55	3
DO6051R009	9	A	15	19	55	4
DO6051R010	10	A	16,5	19	55	4
DO6051R011	11	A	17,5	19	55	5
DO6051R012	12	B	19	19	55	5
DO6051R013	13	A	20	22	55	5
DO6051R014	14	A	21,5	22	55	6
DO6051R015	15	B	22	22	55	6
DO6051R016	16	C	24	22	55	6
DO6051R017	17	C	25	22	55	6
DO6051R018	18	C	26	22	55	7
DO6051R019	19	C	27,5	22	55	7

3/8" SQUARE DRIVE

VIERKANT | CARRÉ



6-POINT DEEP
6-KANT TIEF
6-PANS PROFONDE

Type	Drawing	D1 mm	D2 mm	L mm	L2 mm
Metrical · Metrisch · Métriques					
DO1038-1-006	6 A	11	19	63	12
DO1038-1-007	7 A	12,5	19	63	12
DO1038-1-008	8 A	13,8	19	63	12
DO1038-1-009	9 A	15	19	65	12
DO1038-1-010	10 A	16	19	65	12
DO1038-1-011	11 A	17,5	19	65	25
DO1038-1-012	12 B	19	19	65	25
DO1038-1-013	13 A	20	22	65	25
DO1038-1-014	14 A	21	22	65	25
DO1038-1-015	15 B	22	22	65	25
DO1038-1-016	16 C	24	22	65	25
DO1038-1-017	17 C	25	22	65	25
DO1038-1-018	18 C	26	22	65	25
DO1038-1-019	19 C	27,5	22	65	25
DO1038-1-020	20 C	28	22	65	25
DO1038-1-021	21 C	30	22	65	25
DO1038-1-022	22 C	32	23	65	25
DO1038-1-024	24 C	34	23	65	25

12-POINT NORMAL
12-KANT NORMAL
12-PANS NORMALE

Type	Drawing	D1 mm	D2 mm	L mm	L2 mm
Metrical · Metrisch · Métriques					
DO65815006	6 A	11	19	30	5
DO65815007	7 A	12	19	30	8
DO65815008	8 A	13	19	30	8
DO65815009	9 A	15	19	30	8
DO65815010	10 A	16	19	30	8
DO65815011	11 A	17,5	19	30	9
DO65815012	12 A	18,5	19	30	9
DO65815013	13 A	20	22	30	10
DO65815014	14 A	21	22	32	11
DO65815015	15 B	22	22	32	12
DO65815016	16 C	24	22	32	12
DO65815017	17 C	25	22	34	12
DO65815018	18 C	26	22	34	13
DO65815019	19 C	27	22	34	13
DO65815020	20 C	28	22	34	13
DO65815021	21 C	30	22	34	14
DO65815022	22 C	31	23	34	15
DO65815023	23 C	32	23	34	15
DO65815024	24 C	34	23	34	16
DO65815025	25 C	35	23	36	16
DO65815026	26 C	36	23	36	16

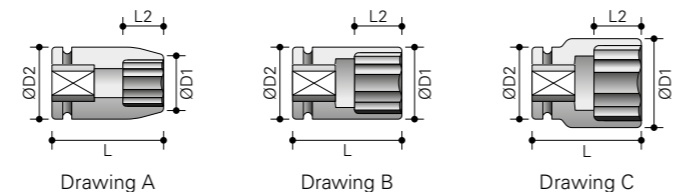
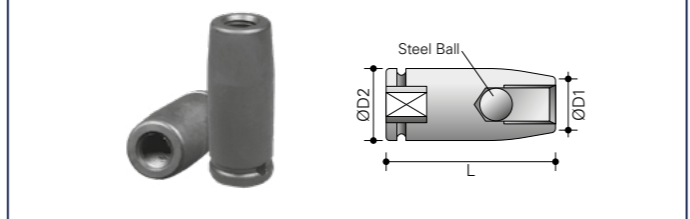
12-POINT DEEP
12-KANT TIEF
12-PANS PROFONDE

Type	Drawing	D1 mm	D2 mm	L mm	L2 mm
Metrical · Metrisch · Métriques					
DO65817006	6 A	11	19	63	5
DO65817007	7 A	12	19	63	5
DO65817008	8 A	13	19	63	6
DO65817009	9 A	15	19	65	6
DO65817010	10 A	16	19	65	7
DO65817011	11 A	17,5	19	65	8
DO65817012	12 A	18,5	19	65	9
DO65817013	13 A	20	22	65	9
DO65817014	14 A	21	22	65	11
DO65817015	15 B	22	22	65	11
DO65817016	16 C	24	22	65	11
DO65817017	17 C	25	22	65	11
DO65817018	18 C	26	22	65	13
DO65817019	19 C	27	22	65	13
DO65817020	20 C	28	22	65	13
DO65817021	21 C	30	22	65	15
DO65817022	22 C	31	23	65	15
DO65817023	23 C	32	23	65	15
DO65817024	24 C	34	23	65	16
DO65817025	25 C	35	23	65	16
DO65817026	26 C	36	23	65	16

ACCESSORIES | ZUBEHÖR | ACCESSOIRES

STUD BOLT SETTERS
STEBBOLZENSETZER
PRISE GOUJON

Type	Size	D1 mm	D2 mm	L mm
DO69781050	M5x0,8	12	22	50
DO69781053	M6x1,0	12,5	22	50
DO69781056	M7x1,0	13	22	50
DO69781059	M8x1,0	15	22	50
DO69781060	M8x1,25	14,5	22	50
DO69781062	M10x1,25	18	22	50
DO69781063	M10x1,5	17	22	50
DO69781066	M12x1,75	19	22	50



3/8" SQUARE DRIVE

VIERKANT | CARRÉ



6-POINT L = 150
6-KANT L = 150
6-PANS L = 150

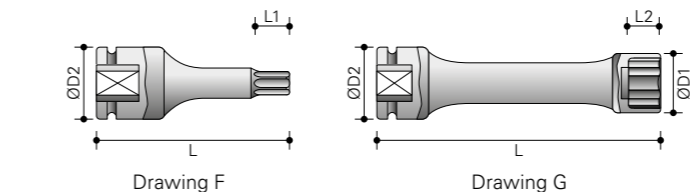
Type	Drawing	D1 mm	D2 mm	L mm	L2 mm
Metrical · Metrisch · Métriques					
DO60715006	6 G	11	19	150	4
DO60715008	8 G	13	19	150	8
DO60715010	10 G	16	19	150	8
DO60715012	12 G	18,5	19	150	9
DO60715013	13 G	20	22	150	9
DO60715014	14 G	21	22	150	9
DO60715015	15 G	22	22	150	11
DO60715016	16 G	24	22	150	11
DO60715017	17 G	25	22	150	11
DO60715018	18 G	26	22	150	12

6-POINT L = 200
6-KANT L = 200
6-PANS L = 200

Type	Drawing	D1 mm	D2 mm	L mm	L2 mm
Metrical · Metrisch · Métriques					
DO60716006	6 G	11	19	200	4
DO60716008	8 G	13	19	200	8
DO60716010	10 G	16	19	200	8
DO60716012	12 G	18,5	19	200	9
DO60716013	13 G	20	22	200	9
DO60716014	14 G	21	22	200	9
DO60716015	15 G	22	22	200	11
DO60716016	16 G	24	22	200	11
DO60716017	17 G	25	22	200	11

6-POINT L = 250
6-KANT L = 250
6-PANS L = 250

Type	Drawing	D1 mm	D2 mm	L mm	L2 mm
Metrical · Metrisch · Métriques					
DO60717006	6 G	11	19	250	4
DO60717008	8 G	13	19	250	8
DO60717010	10 G	16	19	250	8
DO60717012	12 G	18,5	19	250	9
DO60717013	13 G	20	22	250	9
DO60717014	14 G	21	22	250	9
DO60717015	15 G	22	22	250	11
DO60717016	16 G	24	22	250	11
DO60717017	17 G	25	22	250	11



SURFACE DRIVE NORMAL
SURFACE DRIVE NORMAL
SURFACE DRIVE NORMALE

Type	Drawing	D1 mm	D2 mm	L mm	L2 mm
Metrical · Metrisch · Métriques					
DO63415008	8 A	13,8	19	32	8
DO63415009	9 A	15	19	32	8
DO63415010	10 A	16	19	32	8
DO63415011	11 A	17,5	19	32	9
DO63415012	12 B	19	19	32	9
DO63415013	13 A	20	22	32	9
DO63415014	14 B	22	22	32	9
DO63415015	15 B	22	22	32	11
DO63415016	16 C	24	22	32	11
DO63415017	17 C	25	22	32	11
DO63415018	18 C	26	22	32	11
DO63415019	19 C	28	22	32	11

SURFACE DRIVE NORMAL
SURFACE DRIVE NORMAL
SURFACE DRIVE NORMALE

Type	Drawing	D1 mm	D2 mm	L mm	L2 mm
SAE - Zoll - Pouce					
DO63410008	1/4"	11,5	19	32	4
DO63410010	5/16"	13,8	19	32	8
DO63410012	3/8"	15,5	19	32	8
DO63410014	7/16"	17,5	19	32	9
DO63410016	1/2"	20	22	32	9
DO63410018	9/16"	22	22	32	11
DO63410020	5/8"	24	22	32	11
DO63410022	11/16"	26	22	32	11
DO63410024	3/4"	28	22	32	11

TORX® INTERNAL
TORX® INNEN
TORX® INTÉRIEURE

Type	Drawing	D2 mm	L mm	L1 mm	-
DO64711009	T9	19	50	2,8	-
DO64711010	T10	19	50	2,8	-
DO64711015	T15	19	50	2,8	-
DO64711020	T20	19	50	3,0	-
DO64711025	T25	19	50	3,0	-
DO64711027	T27	19	50	3,8	-
DO64711030	T30	19	50	3,8	-
DO64711040	T40	19	50	4,3	-
DO64711045	T45	19	50	5,0	-
DO64711047	T47	19	50	5,0	-
DO64711050	T50	19	50	5,5	-

3/8" SQUARE DRIVE

VIERKANT | CARRÉ



SURFACE DRIVE DEEP
SURFACE DRIVE TIEF
SURFACE DRIVE PROFONDE

Type	Drawing	D1 mm	D2 mm	L mm	L2 mm
Metrical · Metrisch · Métriques					
DO63417008	8	A	13,8	19	80
DO63417009	9	A	15	19	80
DO63417010	10	A	16	19	80
DO63417011	11	A	17,5	19	80
DO63417012	12	B	19	19	80
DO63417013	13	A	20	22	80
DO63417014	14	B	22	22	80
DO63417015	15	B	22	22	80
DO63417016	16	C	24	22	80
DO63417017	17	C	25	22	80
DO63417018	18	C	26	22	80
DO63417019	19	C	28	22	80

SURFACE DRIVE DEEP
SURFACE DRIVE TIEF
SURFACE DRIVE PROFONDE

Type	Drawing	D1 mm	D2 mm	L mm	L2 mm
SAE · Zoll · Pouce					
DO63412010	5/16"	A	13,8	19	80
DO63412012	3/8"	A	15,5	19	80
DO63412014	7/16"	A	17,5	19	80
DO63412016	1/2"	A	20	22	80
DO63412018	9/16"	B	22	22	80
DO63412020	5/8"	C	24	22	80
DO63412022	11/16"	C	26	22	80
DO63412024	3/4"	C	28	22	80

TORX® TAMPER RESISTANT INTERNAL
TORX® TAMPER RESISTANT INNEN
TORX® TAMPER RESISTANT INTÉRIEURE

Type	Drawing	D2 mm	L mm	L1 mm
DO64716020	T20	F	19	50
DO64716025	T25	F	19	50
DO64716027	T27	F	19	50
DO64716030	T30	F	19	50
DO64716040	T40	F	19	50
DO64716045	T45	F	19	50
DO64716047	T47	F	19	50
DO64716050	T50	F	19	50
DO64716055	T55	F	19	50

TORX® EXTERNAL
TORX® AUSSEN
TORX® EXTÉRIEURE

Type	Drawing	D1 mm	D2 mm	L mm	L2 mm
DO63310005	E5	A	9	19	32
DO63310006	E6	A	10	19	32
DO63310007	E7	A	10	19	32
DO63310008	E8	A	10,5	19	32
DO63310010	E10	A	12,5	19	32
DO63310011	E11	A	14,5	19	32
DO63310012	E12	A	15	19	32
DO63310014	E14	A	17,5	19	32
DO63310016	E16	B	19	19	32
DO63310018	E18	B	21	21	34

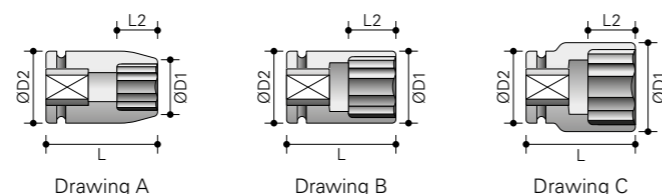
TORX® EXTERNAL MAGNETIC
TORX® AUSSEN MAGNETISCH
TORX® EXTÉRIEURE MAGNÉTIQUE

Type	Drawing	D1 mm	D2 mm	L mm	L2 mm
DO6331N008	E8	A	11,5	19	32
DO6331N010	E10	A	13,5	19	32
DO6331N011	E11	A	14	19	32
DO6331N012	E11	A	15,5	19	32
DO6332N014	E14	A	17,5	19	32
DO6332N016	E16	A	19	19	32
DO6332N018	E18	A	21	21	32

TORX® THIN WALL EXTERNAL
TORX® DÜNNWANDIG AUSSEN
TORX® À PAROI MINCE EXTÉRIEURE

Type	Drawing	D1 mm	D2 mm	L mm	L2 mm
DO63315005	E5	A	8	19	32
DO63315006	E6	A	9	19	32
DO63315007	E7	A	9,3	19	32
DO63315008	E8	A	10	19	32
DO63315010	E10	A	12,3	19	32
DO63315011	E11	A	13	19	32
DO63315012	E12	A	14	19	32
DO63315014	E14	A	16,5	19	32
DO63315016	E16	A	18,4	19	32

Thin wall sockets are not included in the Action warranty.



3/8" SQUARE DRIVE

VIERKANT | CARRÉ



6-POINT THIN WALL NORMAL
6-KANT DÜNNWANDIG NORMAL
6-PANS À PAROI MINCE NORMALES

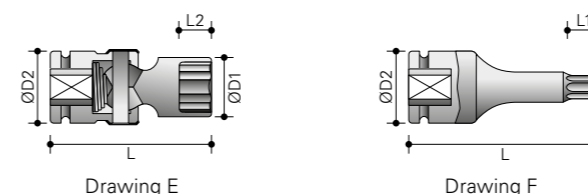
Type	Drawing	D1 mm	D2 mm	L mm	L2 mm
Metrical · Metrisch · Métriques					
DO61110006	6	A	10,5	19	30
DO61110007	7	A	11,5	19	30
DO61110008	8	A	12,5	19	30
DO61110009	9	A	14	19	30
DO61110010	10	A	15	19	30
DO61110011	11	A	17	19	30
DO61110012	12	A	17,5	19	30
DO61110013	13	B	19	19	30
DO61110014	14	B	20	20	30

Thin wall sockets are not included in the Action warranty.

6-POINT THIN WALL DEEP
6-KANT DÜNNWANDIG TIEF
6-PANS À PAROI MINCE PROFONDE

Type	Drawing	D1 mm	D2 mm	L mm	L2 mm
Metrical · Metrisch · Métriques					
DO61112007	7	A	11,5	19	65
DO61112008	8	A	12,5	19	65
DO61112009	9	A	14	19	65
DO61112010	10	A	15	19	65
DO61112011	11	A	17	19	65
DO61112012	12	A	17,5	19	65
DO61112013	13	B	19	19	65
DO61112014	14	B	20	20	65
DO61112015	15	A	21	22	65
DO61112016	16	C	22,5	22	65
DO61112017	17	C	24	22	65
DO61112018	18	C	25	22	65
DO61112019	19	C	26	22	65
DO61112020	20	C	27	22	65
DO61112021	21	C	28	22	65
DO61112022	22	C	30	23	65

Thin wall sockets are not included in the Action warranty.



6-POINT UNIVERSAL JOINT
6-KANT KUGELGELENKSCHLÜSSEL
6-PANS CARDAN NORMALE

Type	Drawing	D1 mm	D2 mm	L mm	L2 mm
Metrical · Metrisch · Métriques					
DO1038-2-009	9	E	15	24	53
DO1038-2-010	10	E	15	24	53
DO1038-2-011	11	E	17	24	53
DO1038-2-012	12	E	19	24	53
DO1038-2-013	13	E	19	24	53
DO1038-2-014	14	E	21	24	53
DO1038-2-015	15	E	22	24	53
DO1038-2-016	16	E	23	24	53
DO1038-2-017	17	E	25	24	53
DO1038-2-018	18	E	25	24	53
DO1038-2-019	19	E	27	24	53
DO1038-2-020	20	E	30	24	53
DO1038-2-021	21	E	30	24	53
DO1038-2-022	22	E	32	24	53

6-POINT UNIVERSAL JOINT DEEP
6-KANT KUGELGELENKSCHLÜSSEL TIEF
6-PANS CARDAN PROFONDE

Type	Drawing	D1 mm	D2 mm	L mm	L2 mm
Metrical · Metrisch · Métriques					
DO1038-4-009	9	E	15	24	78
DO1038-4-010	10	E	15	24	78
DO1038-4-011	11	E	17	24	80
DO1038-4-012	12	E	19	24	80
DO1038-4-013	13	E	19	24	80
DO1038-4-014	14	E	21	24	80
DO1038-4-015	15	E	22	24	80
DO1038-4-016	16	E	23	24	80
DO1038-4-017	17	E	25	24	80
DO1038-4-018	18	E	25	24	80
DO1038-4-019	19	E	27	24	80
DO1038-4-020	20	E	30	24	80
DO1038-4-021	21	E	30	24	80
DO1038-4-022	22	E	32	24	80

Universal joint sockets are not included in the Action warranty.

3/8" SQUARE DRIVE

VIERKANT | CARRÉ



1 HEX DRIVER (INBUS) AUSSEN-6-KANT (INBUS) CARDAN EMPREINTE 6-PANS (INBUS)

Type	Drawing	D2 mm	L mm	L1 mm	-	
Metrical · Metrisch · Métriques						
DO696203A	3	D	19	50	11	-
DO696204A	4	D	19	50	11	-
DO696205A	5	D	19	50	11	-
DO696206A	6	D	19	50	11	-
DO696207A	7	D	19	50	16	-
DO696208A	8	D	19	50	16	-
DO696209A	9	D	19	50	16	-
DO696210A	10	D	19	50	16	-
DO696211A	11	D	19	50	16	-
DO696212A	12	D	19	50	16	-
DO696213A	13	D	19	50	16	-
DO696214A	14	D	19	50	16	-
DO696215A	15	D	19	50	16	-
DO696216A	16	D	19	50	16	-

2 TRIPLE SQUARE AUSSEN-XZN CARRÉ TRIPLE

Type	Drawing	D2 mm	L mm	L1 mm	-	
DO65216005	M5	L	19	50	7	-
DO65216006	M6	L	19	50	7	-
DO65216008	M8	L	19	50	9	-
DO65216010	M10	L	19	50	9	-
DO65216012	M12	L	19	50	11	-
DO65216014	M14	L	19	50	11	-
DO65216016	M16	L	19	50	13	-

3 TRIPLE SQUARE LONG AUSSEN-XZN LANG CARRÉ TRIPLE LONGUE

Type	Drawing	D2 mm	L mm	L1 mm	-	
DO65217005	M5	L	19	100	7	-
DO65217006	M6	L	19	100	7	-
DO65217008	M8	L	19	100	9	-
DO65217010	M10	L	19	100	9	-
DO65217012	M12	L	19	100	11	-
DO65217014	M14	L	19	100	11	-
DO65217016	M16	L	19	100	13	-
DO65218005	M5	L	19	120	7	-
DO65218006	M6	L	19	120	7	-
DO65218008	M8	L	19	120	9	-
DO65218010	M10	L	19	120	9	-
DO65218012	M12	L	19	120	11	-
DO65218014	M14	L	19	120	11	-
DO65218016	M14	L	19	120	13	-

4 UNIVERSAL JOINT HEX DRIVER (INBUS) KUGELGELENK AUSSEN-6-KANT (INBUS) CARDAN EMPREINTE 6-PANS (INBUS)

Type	Drawing	D2 mm	L mm	L1 mm	-	
Metrical · Metrisch · Métriques						
DO65110005	5	N	24	60	11	-
DO65110006	6	N	24	60	11	-
DO65110007	7	N	24	60	15	-
DO65110008	8	N	24	60	15	-
DO65110009	9	N	24	60	15	-
DO65110010	10	N	24	60	15	-
DO65110011	11	N	24	60	15	-
DO65110012	12	N	24	60	15	-
DO65110013	13	N	24	60	15	-
DO65110014	14	N	24	60	15	-
DO65110015	15	N	24	60	15	-
DO65110016	16	N	24	60	15	-

Universal joint sockets are not included in the Action warranty.

5 UNIVERSAL JOINT FOR TORX® INTERNAL KUGELGELENKSSCHLÜSSEL FÜR INTERN TORX® CARDAN TORX® INTÉRIEURE

Type	Drawing	D2 mm	L mm	L1 mm	-	
DO64910020	T20	N	24	60	3	-
DO64910025	T25	N	24	60	3	-
DO64910027	T27	N	24	60	3,8	-
DO64910030	T30	N	24	60	3,8	-
DO64910040	T40	N	24	60	4,3	-
DO64910045	T45	N	24	60	5	-
DO64910047	T47	N	24	60	5	-
DO64910050	T50	N	24	60	5,5	-
DO64910055	T55	N	24	60	5,5	-

Universal joint sockets are not included in the Action warranty.

6 UNIVERSAL JOINT FOR TORX® EXTERNAL KUGELGELENKSSCHLÜSSEL FÜR EXTERN TORX® CARDAN TORX® EXTÉRIEURE

Type	Drawing	D2 mm	L mm	L2 mm	-	
DO68710005	E5	E	24	50	4,5	-
DO68710006	E6	E	24	50	5	-
DO68710007	E7	E	24	50	6	-
DO68710008	E8	E	24	50	6	-
DO68710010	E10	E	24	50	7,5	-
DO68710012	E12	E	24	50	8,5	-
DO68710014	E14	E	24	50	10	-
DO68710016	E16	E	24	50	11	-

Universal joint sockets are not included in the Action warranty.

PIN & RING | RING & STIFT | JOINT TORIQUE CLAVETTE

Type
DO1038-0-000



3/8" & 1/2" SQUARE DRIVE

VIERKANT | CARRÉ



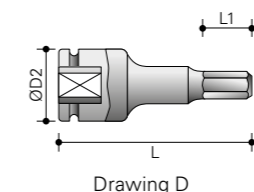
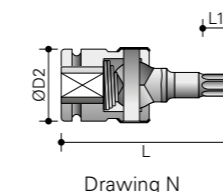
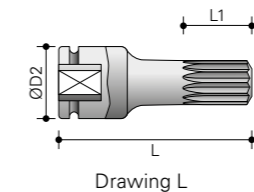
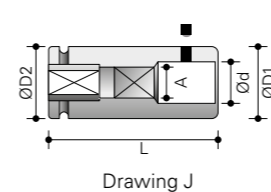
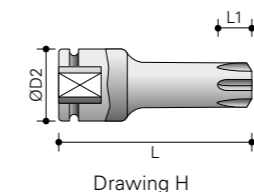
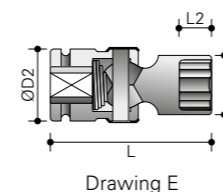
3/8" Drive | Antrieb | Carré d'entraînement

1 RIBE DRIVER RIBE PROFIL PROFIL RIBE

Type	Drawing	D2 mm	L mm	L1 mm	-	
DO65315005	M5	H	19	50	4,5	-
DO65315006	M6	H	19	50	5	-
DO65315007	M7	H	19	50	6,5	-
DO65315008	M8	H	19	50	7,5	-
DO65315010	M10	H	19	50	9	-
DO65315012	M12	H	19	50	10	-
DO65315014	M14	H	19	50	12	-
DO65315016	M16	H	19	50	14	-

2 TAP HOLDER GEWINDEBOHRERHALTER DOUILLE PORTE-TARAUD

Type	A mm	Drawing	Ø D1 mm	Ø D2 mm	Ø d mm	L mm
DO6321B001	3,4	J	19	19	4,5	38
DO6321B002	4,9	J	19	19	5	38
DO6321B003	5,5	J	19	50	7,0	40
DO6321B004	6,2	J	19	19	8,0	40
DO6321B005	7,0	J	19	19	9,0	43
DO6321B006	8,0	J	19	19	10,0	45
DO6321B007	9,0	J	19	50	11,0	45
DO6321B008	9,0	J	22	22	12,0	45
DO6321B009	11,0	J	22	22	14,0	45



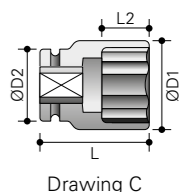
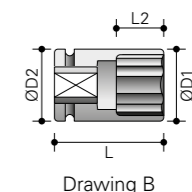
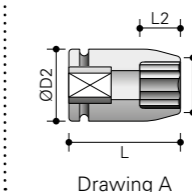
1/2" Drive | Antrieb | Carré d'entraînement

3 4-POINT NORMAL 4-KANT NORMAL 4-PANS NORMALE

Type	Drawing	D1 mm	D2 mm	L mm	L2 mm	
Metrical · Metrisch · Métriques						
DO63125007	7	A	17,5	25	40	8
DO63125008	8	A	19	25	40	9
DO63125010	10	A	21,5	25	40	10
DO63125011	11	A	23	25	40	11
DO63125012	12	A	24	25	40	12
DO63125013	13	A	26	30	40	12
DO63125014	14	A	27,5	30	40	20
DO63125015	15	A	28,5	30	40	20
DO63125016	16	B	30	30	40	20
DO63125017	17	C	32	30	40	20
DO63125018	18	C	34	30	45	20
DO63125019	19	C	36	30	45	20
DO63125021	21	C	40	30	45	20
DO63125022	22	C	42	30	45	20
DO63125024	24	C	44	30	50	22
DO63125030	30	C	53	30	50	22
DO63125032	32	C	56	30	50	22

4 8-POINT 8-KANT 8-PANS

Type	Drawing	D1 mm	D2 mm	L mm	L2 mm	
Metrical · Metrisch · Métriques						
DO2012-8-010	10	A	20	22	38	7
DO2012-8-014	14	B	26	26	38	11
DO2012-8-017	17	B	30	30	38	11
DO2012-8-019	19	B	34	34	40	13
DO2012-8-022	22	B	38	38	40	15
DO2012-8-024	24	B	42	38	45	18
DO2012-8-027	27	B	46,5	46,5	50	19
DO2012-8-028	28	B	49	49	50	19



1/2" SQUARE DRIVE

VIERKANT | CARRÉ



6-POINT NORMAL 6-KANT NORMAL 6-PANS NORMALE

Type	mm	Drawing	D1 mm	D2 mm	L mm	L2 mm
Metrical · Metrisch · Metriques						
DO2012-0-008	8	A	14,5	25	38	9
DO2012-0-009	9	A	16	25	38	12
DO2012-0-010	10	A	17	25	38	12
DO2012-0-011	11	A	19	25	38	12
DO2012-0-012	12	A	20	24	38	12
DO2012-0-013	13	A	21	25	38	12
DO2012-0-014	14	A	22	25	38	12
DO2012-0-015	15	A	24	30	38	12
DO2012-0-016	16	A	25	30	38	12
DO2012-0-017	17	A	26	30	38	13
DO2012-0-018	18	A	27,5	30	38	13
DO2012-0-019	19	A	29	30	38	13
DO2012-0-020	20	B	30	30	38	13
DO2012-0-021	21	B	32	30	38	13
DO2012-0-022	22	C	32	30	38	13
DO2012-0-023	23	C	32,5	30	38	13
DO2012-0-024	24	C	35	30	45	20
DO2012-0-025	25	C	36	30	45	20
DO2012-0-026	26	C	37,5	30	45	22
DO2012-0-027	27	C	39	30	50	22
DO2012-0-028	28	C	40	30	50	22
DO2012-0-029	29	C	41	30	50	22
DO2012-0-030	30	C	42,5	30	50	22
DO2012-0-032	32	C	44	30	50	28
DO2012-0-034	34	C	45	30	50	28
DO2012-0-036	36	C	48	30	50	28
DO2012-0-038	38	C	53	38	50	24
DO2012-0-041	41	C	58	44	60	27
DO2012-0-046	46	C	65	44	70	30
DO2012-0-050	50	C	70	52	70	32

6-POINT NORMAL 6-KANT NORMAL 6-PANS NORMALE

Type	SAE · Zoll · Pouce	Drawing	D1 mm	D2 mm	L mm	L2 mm
DO2012-0-3/8	3/8"	A	16	22	38	12
DO2012-0-7/16	7/16"	A	18	22	38	12
DO2012-0-1/2	1/2"	A	20	22	38	12
DO2012-0-9/16	9/16"	A	22	24	38	12
DO2012-0-5/8	5/8"	B	25	25	38	12
DO2012-0-11/16	11/16"	B	26	26	38	13
DO2012-0-3/4	3/4"	B	28	28	38	13
DO2012-0-13/16	13/16"	B	30	30	38	13
DO2012-0-7/8	7/8"	B	32	32	38	13
DO2012-0-15/16	15/16"	B	34	34	38	13
DO2012-0-1	1"	B	36	36	38	14
DO2012-0-1 1/16	1 1/16"	B	38	38	40	16
DO2012-0-1 1/8	1 1/8"	C	40	38	40	16
DO2012-0-1 3/16	1 3/16"	C	42	38	40	16
DO2012-0-1 1/4	1 1/4"	C	44	38	40	18
DO2012-0-1 3/8	1 3/8"	C	48,5	38	50	26
DO2012-0-1 7/16	1 7/16"	C	50,5	38	50	26
DO2012-0-1 1/2	1 1/2"	C	52,5	38	50	26

6-POINT NORMAL MAGNETIC 6-KANT NORMAL MAGNETISCH 6-PANS NORMALE MAGNÉTIQUE

Type	mm	Drawing	D1 mm	D2 mm	L mm	L2 mm
Metrical · Metrisch · Metriques						
DO6052P008	8	A	15	25	38	3
DO6052P009	9	A	16	25	38	4
DO6052P010	10	A	17,5	25	38	4
DO6052P011	11	A	18,5	25	38	5
DO6052P012	12	A	20	25	38	5
DO6052P013	13	A	21	25	38	5
DO6052P014	14	A	22,5	25	38	6
DO6052P015	15	A	23,7	30	38	6
DO6052P016	16	A	25	30	38	6
DO6052P017	17	A	26,5	30	38	6
DO6052P018	18	A	27,5	30	38	7
DO6052P019	19	A	29	30	38	7
DO6052P020	20	B	30	30	38	7
DO6052P021	21	C	31	30	38	8
DO6052P022	22	C	32,5	30	38	8
DO6052P024	24	C	35	30	45	10

6-POINT DEEP 6-KANT TIEF 6-PANS PROFONDE

Type	mm	Drawing	D1 mm	D2 mm	L mm	L2 mm
Metrical · Metrisch · Metriques						
DO2012-1-008	8	A	14,5	25	78	13
DO2012-1-009	9	A	16	25	78	14
DO2012-1-010	10	A	17	25	78	14
DO2012-1-011	11	A	18	25	78	14
DO2012-1-012	12	A	19,5	25	78	14
DO2012-1-013	13	A	21	25	78	14
DO2012-1-014	14	A	22	25	78	17
DO2012-1-015	15	A	23,5	30	78	17
DO2012-1-016	16	A	23,5	30	78	17
DO2012-1-017	17	A	26	30	78	17
DO2012-1-018	18	A	26	30	78	17
DO2012-1-019	19	A	28	30	78	19
DO2012-1-020	20	B	30,5	30	78	19
DO2012-1-021	21	B	31	30	78	24
DO2012-1-022	22	C	32,5	30	78	24
DO2012-1-023	23	C	32,5	30	78	24
DO2012-1-024	24	C	35	30	78	24
DO2012-1-025	25	C	36	30	78	24
DO2012-1-026	26	C	37,5	30	78	24
DO2012-1-027	27	C	38	30	78	24
DO2012-1-028	28	C	40	30	78	24
DO2012-1-029	29	C	40	30	78	24
DO2012-1-030	30	C	42	30	78	24
DO2012-1-031	31	C	43	30	78	24
DO2012-1-032	32	C	45	30	78	24
DO2012-1-033	33	C	45	30	78	24
DO2012-1-034	34	C	45	30	78	24
DO2012-1-035	35	C	47	30	78	24
DO2012-1-036	36	C	49	30	78	24
DO2012-1-038	38	C	53	38	93	24
DO2012-1-041	41	C	58	44	93	58
DO2012-1-046	46	C	65	44	93	58

1/2" SQUARE DRIVE

VIERKANT | CARRÉ

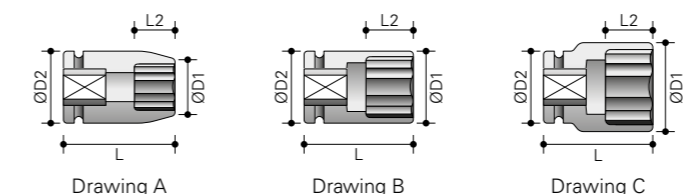


6-POINT DEEP 6-KANT TIEF 6-PANS PROFONDE

Type	mm	Drawing	D1 mm	D2 mm	L mm	L2 mm
SAE · Zoll · Pouce						
DO2012-1-3/8	3/8"	A	16	22	78	14
DO2012-1-7/16	7/16"	A	18	22	78	14
DO2012-1-1/2	1/2"	A	20	22	78	14
DO2012-1-9/16	9/16"	A	22	24	78	17
DO2012-1-5/8	5/8"	B	26	26	78	17
DO2012-1-11/16	11/16"	B	26	26	78	17
DO2012-1-3/4	3/4"	B	28	28	78	19
DO2012-1-13/16	13/16"	B	30	30	78	24
DO2012-1-7/8	7/8"	B	32	32	78	24
DO2012-1-15/16	15/16"	B	28	28	78	19
DO2012-1-1	1"	B	36	36	78	24
DO2012-1-1 1/16	1 1/16"	B	38	38	78	24
DO2012-1-1 1/8	1 1/8"	C	38	38	78	24
DO2012-1-1 3/16	1 3/16"	C	42	38	78	24
DO2012-1-1 1/4	1 1/4"	C	44	38	78	24
DO2012-1-1 5/16	1 5/16"	C	45	38	78	24
DO2012-1-1 3/8	1 3/8"	C	48,5	38	78	24
DO2012-1-1 7/16	1 7/16"	C	50,5	38	78	24
DO2012-1-1 1/2	1 1/2"	C	52,5	38	78	24

6-POINT DEEP MAGNETIC 6-KANT TIEF MAGNETISCH 6-PANS PROFONDE MAGNETQUE

Type	mm	Drawing	D1 mm	D2 mm	L mm	L2 mm
Metrical · Metrisch · Metriques						
DO6052R008	8	A	15	25	78	3
DO6052R009	9	A	16	25	78	4
DO6052R010	10	A	17,5	25	78	4
DO6052R011	11	A	18,5	25	78	5
DO6052R012	12	A	20	25	78	5
DO6052R013	13	A	21	25	78	5
DO6052R014	14	A	22,5	25	78	6
DO6052R015	15	A	23,7	30	78	6
DO6052R016	16	A	25	30	78	6
DO6052R017	17	A	26,5	30	78	6
DO6052R018	18	A	27,5	30	78	7
DO6052R019	19	A	29	30	78	7
DO6052R020	20	B	30	30	78	7
DO6052R021	21	C	31	30	78	8
DO6052R022	22	C	32,5	30	78	8
DO6052R024	24	C	35	30	78	10



6-POINT THIN WALL NORMAL 6-KANT DÜNNWANDIG NORMAL 6-PANS PAROI MINCE NORMALES

Type	mm	Drawing	D1 mm	D2 mm	L mm	L2 mm
Metrical · Metrisch · Metriques						
DO61120008	8	A	13	25	38	6
DO61120009	9	A	14,5	25	38	6
DO61120010	10	A	15,5	25	38	7
DO61120011	11	A	16,7	25	38	8
DO61120012	12	A	18	25	38	9
DO61120013	13	A	19,2	25	38	9
DO61120014	14	A	21	25	38	11
DO61120015	15	A	21,7	30	38	11
DO61120016	16	A	23	30	38	11
DO61120017	17	B	24	30	38	11
DO61120018	18	B	25	30	38	13
DO61120019	19	B	26	30	38	13
DO61120020	20	B	27,5	30	38	13
DO61120021	21	B	28	30	38	15
DO61120022	22	B	29,5	30	38	15
DO61120023	23	C	30,5	30	38	15
DO61120024	24	C	32	30	45	18
DO61120030	30	C	40	30	50	21

Thin wall sockets are not included in the Action warranty.

6-POINT THIN WALL DEEP 6-KANT DÜNNWANDIG TIEF 6-PANS PAROI MINCE PROFONDE

Type	mm	Drawing	D1 mm	D2 mm	L mm	L2 mm
Metrical · Metrisch · Metriques						
DO61122008	8	A	14	22	78	13
DO61122009	9	A	14,5	22	78	14
DO61122010	10	A	15,5	22	78	14
DO61122011	11	A	16,7	22	78	14
DO61122012	12	A	18	22	78	14
DO61122013	13	A	19,2	24	78	14
DO61122014	14	A	21	24	78	17
DO61122015	15	A	21,7	24	78	17
DO61122016	16	A	23	24	78	17
DO61122017	17	B	24	24	78	17
DO61122018	18	B	25	25	78	17
DO61122019	19	B	26	26	78	19
DO61122020	20	B	27,5	27,5	78	19
DO61122021	21	B	28	28	78	24
DO61122022	22	B	29,5	29,5	78	24
DO61122						

1/2" SQUARE DRIVE

VIERKANT | CARRÉ



ACTION

6-POINT L = 150
6-KANT L = 150
6-PANS L = 150

Type	Drawing	D1 mm	D2 mm	L mm	L2 mm	
Metrical · Metrisch · Metriques						
DO60725008	8	G	15	25	150	10
DO60725010	10	G	17,5	25	150	12
DO60725012	12	G	19,5	25	150	12
DO60725013	13	G	21	25	150	12
DO60725014	14	G	22,5	25	150	12
DO60725015	15	G	23,5	30	150	12
DO60725017	17	G	26	30	150	13
DO60725019	19	G	28,5	30	150	13
DO60725020	20	G	30	30	150	13
DO60725021	21	G	31	30	150	13
DO60725022	22	G	32	30	150	14
DO60725024	24	G	34	30	150	14
DO60725025	25	G	36	30	150	15

6-POINT THIN WALL WITH PLASTIC STOP AND SLEEVE
6-KANT DÜNNWANDIG TIEF KUNSTSTOFFBESCHICHTETE HÜLSE
6-PANS PAROI MINCE AVEC BUTREE ET MANCHON PLASTIQUE

Type	Drawing	D1 mm	D2 mm	L mm	L2 mm	
Metrical · Metrisch · Metriques						
DO61126015 (white)	15	K	22	30	85	13
DO61126017 (blue)	17	K	27	30	85	14
DO61126019 (yellow)	19	K	29	30	85	15
DO61126021 (red)	21	K	31	30	85	17
DO61126022 (green)	22	K	32,5	30	85	18
DO6112J017 (blue)	17	K	27	25	130	24
DO6112J019 (yellow)	19	K	29	30	130	24
DO6112J021 (red)	21	K	31	30	130	24
DO6112J022 (green)	22	K	32,5	30	130	24

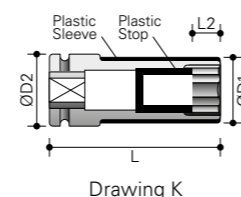
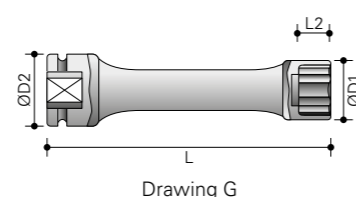
Thin wall sockets are not included in the Action warranty.

6-POINT L = 200
6-KANT L = 200
6-PANS L = 200

Type	Drawing	D1 mm	D2 mm	L mm	L2 mm	
Metrical · Metrisch · Metriques						
DO60726008	8	G	15	25	200	10
DO60726010	10	G	17,5	25	200	12
DO60726012	12	G	20	25	200	12
DO60726013	13	G	20	25	200	12
DO60726014	14	G	21	25	200	12
DO60726015	15	G	23,5	30	200	12
DO60726017	17	G	26	30	200	13
DO60726019	19	G	28,5	30	200	13
DO60726020	20	G	30	30	200	13
DO60726021	21	G	31	30	200	13

6-POINT L = 250
6-KANT L = 250
6-PANS L = 250

Type	Drawing	D1 mm	D2 mm	L mm	L2 mm	
Metrical · Metrisch · Metriques						
DO60727008	8	G	15	25	250	10
DO60727010	10	G	17,5	25	250	12
DO60727012	12	G	20	25	250	12
DO60727013	13	G	20,5	25	250	12
DO60727014	14	G	22,5	25	250	12
DO60727015	15	G	23,5	30	250	12
DO60727017	17	G	26	30	250	13
DO60727019	19	G	28,5	30	250	13
DO60727020	20	G	30	30	250	13
DO60727021	21	G	31	30	250	13
DO60727022	22	G	32	30	250	14



1/2" SQUARE DRIVE

VIERKANT | CARRÉ



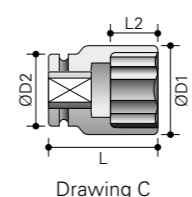
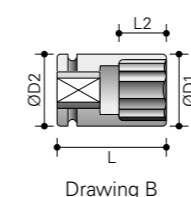
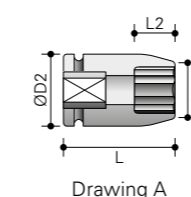
ACTION

12-POINT NORMAL
12-KANT NORMAL
12-PANS NORMALE

Type	Drawing	D1 mm	D2 mm	L mm	L2 mm	
Metrical · Metrisch · Metriques						
DO63825006	6	A	13	25	38	5
DO63825008	8	A	14	25	38	6
DO63825009	9	A	16	25	38	6
DO63825010	10	A	17,5	25	38	7
DO63825011	11	A	19	25	38	8
DO63825012	12	A	20	25	38	9
DO63825013	13	A	21	25	38	9
DO63825014	14	A	22,5	25	38	11
DO63825015	15	A	23,5	30	38	11
DO63825016	16	A	25	30	38	11
DO63825017	17	A	26,5	30	40	11
DO63825018	18	A	27,5	30	40	13
DO63825019	19	A	29	30	40	13
DO63825020	20	B	30	30	40	13
DO63825021	21	C	31	30	40	15
DO63825022	22	C	32,5	30	40	15
DO63825023	23	C	34	30	40	15
DO63825024	24	C	35	30	45	18
DO63825025	25	C	36	30	45	18
DO63825026	26	C	38	30	50	18
DO63825027	27	C	39	30	50	19
DO63825028	28	C	40	30	50	19
DO63825029	29	C	41	30	50	19
DO63825030	30	C	42,5	30	50	21
DO63825032	32	C	44	30	50	22
DO63825033	33	C	46,5	30	50	22
DO63825036	36	C	50,5	30	50	24
DO63825041	41	C	58,5	44	60	27
DO63825046	46	C	65	44	70	30

12-POINT DEEP
12-KANT TIEF
12-PANS PROFONDE

Type	Drawing	D1 mm	D2 mm	L mm	L2 mm	
Metrical · Metrisch · Metriques						
DO65827006	6	A	13	25	83	5
DO65827007	7	A	14	25	83	5
DO65827008	8	A	15	25	83	6
DO65827009	9	A	16	25	83	6
DO65827010	10	A	17,5	25	83	7
DO65827011	11	A	19	25	83	8
DO65827012	12	A	20	25	83	9
DO65827013	13	A	21	25	83	9
DO65827014	14	A	22,5	25	83	11
DO65827015	15	A	23,5	30	83	11
DO65827016	16	A	25	30	83	11
DO65827017	17	A	26,5	30	83	11
DO65827018	18	A	27,5	30	83	13
DO65827019	19	A	29	30	83	13
DO65827020	20	B	30	30	83	13
DO65827021	21	C	31	30	83	15
DO65827022	22	C	32,5	30	90	15
DO65827023	23	C	34	30	90	15
DO65827024	24	C	35	30	90	18
DO65827025	25	C	36	30	90	18
DO65827026	26	C	38	30	90	18
DO65827027	27	C	39	30	90	19
DO65827028	28	C	40	30	90	19
DO65827029	29	C	41	30	90	19
DO65827030	30	C	42,5	30	90	21
DO65827031	31	C	44	30	90	21
DO65827032	32	C	45	30	90	22
DO65827033	33	C	46,5	30	90	22
DO65827034	34	C	48	30	90	22
DO65827035	35	C	49,5	30	90	22
DO65827036	36	C	50,5	30	90	24
DO65827038	38	C	53	38	90	24
DO65827039	39	C	54,5	44	93	24
DO65827040	40	C	56	44	93	58
DO65827041	41	C	58	44	93	58
DO65827042	42	C	60	44	93	58
DO65827043	43	C	61	44	93	58
DO65827044	44	C	63	44	93	58
DO65827045	45	C	64	44	93	58
DO65827046	46	C	65	44	93	58
DO65827047	47	C	66,5	44	93	58
DO65827048	48	C	68	44	93	58
DO65827049	49	C	69	44	93	58
DO65827050	50	C	70	52	93	58
DO65827052	52	C	72,5	52	93	58
DO65827054	54	C	75	52	93	58
DO65827056	56	C	77	52	93	58
DO65827057	57	C	78	52	93	58
DO65827058	58	C	79	52	93	58



1/2" SQUARE DRIVE

VIERKANT | CARRÉ



1 SURFACE DRIVE NORMAL
SURFACE DRIVE NORMAL
SURFACE DRIVE NORMALE

Type	mm	Drawing	D1 mm	D2 mm	L mm	L2 mm
Metrical · Metrisch · Métriques						
DO63425010	10	A	17,5	25	38	12
DO63425011	11	A	18,7	25	38	12
DO63425012	12	A	20	25	38	12
DO63425013	13	A	21	25	38	12
DO63425014	14	A	22,5	25	38	12
DO63425015	15	A	23,7	30	38	12
DO63425016	16	A	25	30	38	12
DO63425017	17	A	26	30	38	13
DO63425018	18	A	27,5	30	38	13
DO63425019	19	A	28,7	30	38	13
DO63425020	20	B	30	30	38	13
DO63425021	21	B	30	30	38	13
DO63425022	22	C	32	30	38	13
DO63425023	23	C	32	30	38	13
DO63425024	24	C	35	30	45	20
DO63425026	26	C	38	30	50	22
DO63425027	27	C	38,7	30	50	22
DO63425029	29	C	40	30	50	22
DO63425030	30	C	42	30	50	22
DO63425032	32	C	44	30	50	22

2 SURFACE DRIVE DEEP
SURFACE DRIVE TIEF
SURFACE DRIVE PROFONDE

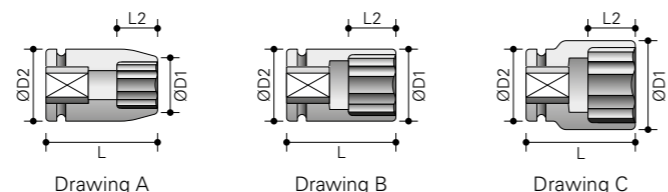
Type	mm	Drawing	D1 mm	D2 mm	L mm	L2 mm
Metrical · Metrisch · Métriques						
DO63427010	10	A	17,5	25	83	14
DO63427011	11	A	18,7	25	83	14
DO63427012	12	A	20	25	83	14
DO63427013	13	A	21	25	83	14
DO63427014	14	A	22,5	25	83	17
DO63427015	15	A	23,7	30	83	17
DO63427016	16	A	25	30	83	17
DO63427017	17	A	26	30	83	17
DO63427018	18	A	27,5	30	83	17
DO63427019	19	A	28,7	30	83	19
DO63427020	20	B	30	30	83	19
DO63427021	21	B	30	30	83	24
DO63427022	22	C	32	30	90	24
DO63427023	23	C	32	30	90	24
DO63427024	24	C	35	30	90	24
DO63427026	26	C	38	30	90	24
DO63427027	27	C	38,7	30	90	24
DO63427029	29	C	40	30	90	24
DO63427030	30	C	42	30	90	24
DO63427032	32	C	44	30	90	24

3 TORX® INTERNAL
TORX® INNEN
TORX® INTÉRIEURE

Type	Drawing	D2 mm	L mm	L1 mm	-	
DO64721020	T20	F	25	55	2,8	-
DO64721025	T25	F	25	55	3,0	-
DO64721027	T27	F	25	55	3,0	-
DO64721030	T30	F	25	55	3,8	-
DO64721040	T40	F	25	55	3,8	-
DO64721045	T45	F	25	55	4,3	-
DO64721047	T47	F	25	55	5,0	-
DO64721050	T50	F	25	55	5,0	-
DO64721055	T55	F	25	55	5,5	-
DO64721060	T60	F	25	55	8,0	-
DO64721070	T70	F	25	55	9,4	-

4 TORX® INTERNAL LONG
TORX® INNEN LANG
TORX® INTÉRIEURE LONGUE

Type	Drawing	D2 mm	L mm	L1 mm	-	
DO64722020	T20	F	25	75	2,8	-
DO64722025	T25	F	25	75	3,0	-
DO64722027	T27	F	25	75	3,0	-
DO64722030	T30	F	25	75	3,8	-
DO64722040	T40	F	25	75	3,8	-
DO64722045	T45	F	25	75	4,3	-
DO64722047	T47	F	25	75	5,0	-
DO64722050	T50	F	25	75	5,0	-
DO64722055	T55	F	25	75	5,5	-
DO64722060	T60	F	25	75	8,0	-
DO64722070	T70	F	25	75	9,4	-
DO64725025	T25	F	25	150	3,0	-
DO64725027	T27	F	25	150	3,0	-
DO64725030	T30	F	25	150	3,8	-
DO64725040	T40	F	25	150	3,8	-
DO64725045	T45	F	25	150	4,3	-



1/2" SQUARE DRIVE

VIERKANT | CARRÉ



1 TORX® TAMPER RESISTANT INTERNAL
TORX® TAMPER RESISTANT INNEN
TORX® TAMPER RESISTANT INTÉRIEURE

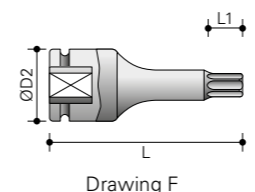
Type	Drawing	D2 mm	L mm	L1 mm	-	
DO64726020	T20	F	25	55	2,8	-
DO64726025	T25	F	25	55	3,0	-
DO64726027	T27	F	25	55	3,0	-
DO64726030	T30	F	25	55	3,8	-
DO64726040	T40	F	25	55	3,8	-
DO64726045	T45	F	25	55	4,3	-
DO64726047	T47	F	25	55	5,0	-
DO64726050	T50	F	25	55	5,0	-
DO64726055	T55	F	25	55	5,5	-
DO64726060	T60	F	25	55	8,0	-
DO64726070	T70	F	25	55	9,4	-

2 TORX® TAMPER RESISTANT INTERNAL LONG
TORX® TAMPER RESISTANT INNEN LANG
TORX® TAMPER RESISTANT INTÉRIEURE LONGUE

Type	Drawing	D2 mm	L mm	L1 mm	-	
DO64727020	T20	F	25	75	2,8	-
DO64727025	T25	F	25	75	3,0	-
DO64727027	T27	F	25	75	3,0	-
DO64727030	T30	F	25	75	3,8	-
DO64727040	T40	F	25	75	3,8	-
DO64727045	T45	F	25	75	4,3	-
DO64727047	T47	F	25	75	5,0	-
DO64727050	T50	F	25	75	5,0	-
DO64727055	T55	F	25	75	5,5	-
DO64727060	T60	F	25	75	8,0	-
DO64727070	T70	F	25	75	9,4	-

3 TORX® EXTERNAL
TORX® AUSSEN
TORX® EXTÉRIEURE

Type	Drawing	D1 mm	D2 mm	L mm	L2 mm	
DO63320010	E10	A	15	25	38	7,5
DO63320011	E11	A	15,5	25	38	8
DO63320012	E12	A	16	25	38	8,5
DO63320014	E14	A	18,5	25	38	10
DO63320016	E16	A	20	25	38	11
DO63320018	E18	A	22	25	38	12
DO63320020	E20	A	25	30	38	13,5
DO63320022	E22	A	26,5	30	45	18
DO63320024	E24	A	28,5	30	45	18



4 TORX® THIN WALL EXTERNAL
TORX® DÜNNWANDIG AUSSEN
TORX® À PAROI MINCE EXTÉRIEURE

Type	Drawing	D1 mm	D2 mm	L mm	L2 mm	
DO63325010	E10	A	13	25	38	7,5
DO63325011	E11	A	14	25	38	8
DO63325012	E12	A	15	25	38	8,5
DO63325014	E14	A	17	25	38	10
DO63325016	E16	A	18,5	25	38	11
DO63325018	E18	A	20,5	25	38	12
DO63325020	E20	A	22,5	30	38	13,5
DO63325022	E22	A	24,5	30	45	18
DO63325024	E24	A	26,5	30	45	18

Thin wall sockets are not included in the Action warranty.

5 TORX® EXTERNAL MAGNETIC
TORX® AUSSEN MAGNETISCH
TORX® EXTÉRIEURE MAGNÉTIQUE

Type	Drawing	D1 mm	D2 mm	L mm	L2 mm	
DO6332N010	E10	A	14,5	25	38	5
DO6332N011	E11	A	15	25	38	5
DO6332N012	E12	A	16	25	38	6
DO6332N014	E14	A	18	25	38	8
DO6332N016	E16	A	20	25	38	9
DO6332N018	E18	A	22	25	38	9
DO6332N020	E20	A	25	30	38	10
DO6332N022	E22	A	27	30	45	10
DO6332N024	E24	A	29	30	45	11

Torx® is a trademark of Textron.



1/2" SQUARE DRIVE

VIERKANT | CARRÉ



6-POINT UNIVERSAL JOINT NORMAL 6-KANT KUGELGELENKSchlüssel NORMAL 6-PANS CARDAN NORMALES

Type	mm	Drawing	D1 mm	D2 mm	L mm	L2 mm
Metrical · Metrisch · Métriques						
DO2012-2-010	10	E	15	28	65	14
DO2012-2-011	11	E	17	28	65	14
DO2012-2-012	12	E	19	28	65	14
DO2012-2-013	13	E	20	28	65	14
DO2012-2-014	14	E	22	28	65	14
DO2012-2-015	15	E	23	28	65	14
DO2012-2-016	16	E	23	28	65	14
DO2012-2-017	17	E	26	32	65	14
DO2012-2-018	18	E	26	32	65	14
DO2012-2-019	19	E	28	32	65	14
DO2012-2-020	20	E	30	32	65	14
DO2012-2-021	21	E	30	32	65	14
DO2012-2-022	22	E	32	32	65	14
DO2012-2-023	23	E	32	32	65	14
DO2012-2-024	24	E	34	32	65	14

Universal joint sockets are not included in the Action warranty.

6-POINT UNIVERSAL JOINT DEEP 6-KANT KUGELGELENKSchlüssel TIEF 6-PANS CARDAN PROFONDE

Type	mm	Drawing	D1 mm	D2 mm	L mm	L2 mm
Metrical · Metrisch · Métriques						
DO2012-4-010	10	E	15	28	90	14
DO2012-4-011	11	E	17	28	90	20
DO2012-4-012	12	E	19	28	90	20
DO2012-4-013	13	E	20	28	90	20
DO2012-4-014	14	E	22	28	90	20
DO2012-4-015	15	E	23	28	90	20
DO2012-4-016	16	E	23	28	90	20
DO2012-4-017	17	E	26	32	90	20
DO2012-4-018	18	E	26	32	90	20
DO2012-4-019	19	E	28	32	90	25
DO2012-4-020	20	E	30	32	90	25
DO2012-4-021	21	E	30	32	90	25
DO2012-4-022	22	E	32	32	90	25
DO2012-4-023	23	E	32	32	90	25
DO2012-4-024	24	E	34	32	90	25

Universal joint sockets are not included in the Action warranty.

UNIVERSAL JOINT FOR TORX® INTERNAL KUGELGELENKSchlüssel FÜR INNEN TORX® CARDAN TORX® INTÉRIEURE

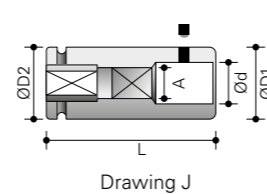
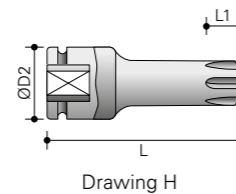
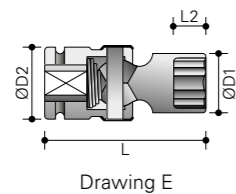
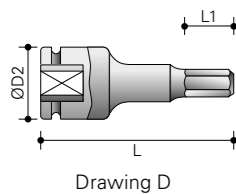
Type	Drawing	D1 mm	L mm	L1 mm	-	
DO64921025	T25	M	28	70	3	-
DO64921027	T27	M	28	70	3	-
DO64921030	T30	M	28	70	3,8	-
DO64921040	T40	M	28	70	3,8	-
DO64921045	T45	M	28	70	4,3	-
DO64921047	T47	M	28	70	5	-
DO64921050	T50	M	28	70	5	-
DO64921055	T55	M	28	70	5,5	-
DO64921060	T60	M	28	70	8	-

Universal joint sockets are not included in the Action warranty.

UNIVERSAL JOINT FOR TORX® EXTERNAL KUGELGELENKSchlüssel FÜR TORX® AUSSEN CARDAN TORX® EXTÉRIEURE

Type	Drawing	D1 mm	D2 mm	L mm	L2 mm	
DO68720010	E10	E	13	28	65	7,5
DO68720011	E11	E	14	28	65	8,0
DO68720012	E12	E	15	28	65	8,5
DO68720014	E14	E	17	28	65	10
DO68720016	E16	E	18,5	28	65	11
DO68720018	E18	E	20,5	28	65	12
DO68720020	E20	E	22,5	32	70	13,5
DO68720022	E22	E	24,5	32	70	15
DO68720024	E24	E	26,5	32	70	17

Universal joint sockets are not included in the Action warranty.



1/2" SQUARE DRIVE

VIERKANT | CARRÉ

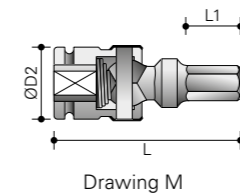
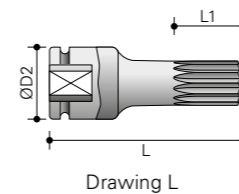


HEX DRIVER (INBUS) AUSSEN-6-KANT (INBUS) EMPREINTE-6-PANS (INBUS)

Type	mm	Drawing	D2 mm	L mm	L1 mm	-
Metrical · Metrisch · Métriques						
DO696304A	4	D	25	75	11	-
DO696305A	5	D	25	75	15	-
DO696306A	6	D	25	75	15	-
DO696307A	7	D	25	75	15	-
DO696308A	8	D	25	75	16	-
DO696309A	9	D	25	75	16	-
DO696310A	10	D	25	75	16	-
DO696311A	11	D	25	75	16	-
DO696312A	12	D	25	75	16	-
DO696313A	13	D	25	75	16	-
DO696314A	14	D	25	75	16	-
DO696315A	15	D	25	75	16	-
DO696316A	16	D	25	75	16	-
DO696317A	17	D	30	75	16	-
DO696319A	19	D	30	75	16	-
DO696321A	21	D	30	75	16	-
DO696322A	22	D	30	75	16	-
DO696324A	24	D	30	75	16	-
DO64827006	6	D	25	100	15	-
DO64828006	6	D	25	125	15	-
DO64827008	8	D	25	100	16	-
DO64828008	8	D	25	125	16	-
DO64827010	10	D	25	100	16	-
DO64828010	10	D	25	125	16	-
DO64827012	12	D	25	100	16	-
DO64827014	14	D	25	100	16	-

TAP HOLDER GEWINDEBOHRERHALTER DOUILLE PORT-TARAUD

Type	A mm	Drawing	Ø D1 mm	Ø D2 mm	Ø d mm	L mm
DO6322B001	3,4	J	22	22	4,5	40
DO6322B002	4,9	J	22	22	6,0	45
DO6322B003	5,5	J	22	22	7,0	45
DO6322B004	6,2	J	22	22	8,0	45
DO6322B005	7,0	J	22	22	9,0	45
DO6322B006	8,0	J	22	22	10,0	45
DO6322B007	9,0	J	22	22	11,0	50
DO6322B008	9,0	J	22	22	12,0	50
DO6322B009	11,0	J	22	22	14,0	52



TRIPLE SQUARE BIT NORMAL AUSSEN-XZN CARRÉ TRIPLE

Type	Drawing	D2 mm	L mm	L1 mm	-	
DO65226005	M5	L	25	55	7	-
DO65226006	M6	L	25	55	7	-
DO65226008	M8	L	25	55	9	-
DO65226010	M10	L	25	55	9	-
DO65226012	M12	L	25	55	11	-
DO65226014	M14	L	25	55	11	-
DO65226016	M16	L	25	55	13	-

TRIPLE SQUARE BIT LONG AUSSEN-XZN LANG CARRÉ TRIPLE LONGUE

Type	Drawing	D2 mm	L mm	L1 mm	-	
DO65227005	M5	L	25	100	7	-
DO65227006	M6	L	25	100	7	-
DO65227008	M8	L	25	100	9	-
DO65227010	M10	L	25	100	9	-
DO65227012	M12	L	25	100	11	-
DO65227014	M14	L	25	100	11	-
DO65227016	M16	L	25	100	13	-
DO65227018	M18	L	25	100	13	-

TRIPLE SQUARE BIT EXTRA LONG AUSSEN-XZN EXTRA LANG CARRÉ TRIPLE EXTRA LONGUE

Type	Drawing	D2 mm	L mm	L1 mm	-	
DO65228008	M8	L	25	120	9	-
DO65228010	M10	L	25	120	9	-
DO65228012	M12	L	25	120	11	-
DO65228018	M18	L	25	120	14	-

RIBE DRIVER RIBE PROFIL PROFILE RIBE

Type	Drawing	D2 mm	L mm	L1 mm	-	
DO65326006	M6	H	25	55	5	-
DO65326007	M7	H	25	55	6,5	-
DO65326008	M8	H	25	55	7,5	-
DO65326010	M10	H	25	55	9	-
DO65326012	M12	H	25	55	10	-
DO65326014	M14	H	25	55	12	-
DO65326016	M16	H	25	55	14	-
DO65326018	M18	H	25	55	16	-

1/2" SQUARE DRIVE

VIERKANT | CARRÉ

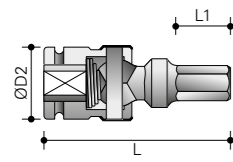
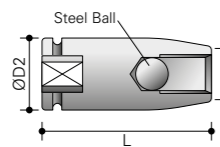


1 HEX DRIVER WITH UNIVERSAL JOINT
AUSSEN-6-KANT KUGELGELENKSCHLÜSSEL
CARDAN, EMPREINTE 6-PANS

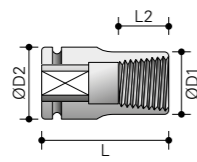
Type	mm	Drawing	D2 mm	L mm	L1 mm	-
Metrical · Metrisch · Métriques						
DO65121006	6	M	28	75	13	-
DO65121007	7	M	28	75	13	-
DO65121008	8	M	28	75	20	-
DO65121009	9	M	28	75	20	-
DO65121010	10	M	28	75	20	-
DO65121011	11	M	28	75	20	-
DO65121012	12	M	28	75	20	-
DO65121013	13	M	28	75	20	-
DO65121014	14	M	28	75	20	-
DO65121015	15	M	28	75	20	-
DO65121016	16	M	28	75	20	-
DO65121017	17	M	28	75	20	-
DO65121018	18	M	28	75	20	-
DO65121019	19	M	28	75	20	-

STUD BOLT SETTERS
STEBBOLZENSETZER
PRISE GOUJON

Type	Size	D1 mm	D2 mm	L mm
DO69782010	M6 x 1,0	13	25	55
DO69782017	M8 x 1,0	15	25	55
DO69782018	M8 x 1,25	15	25	55
DO69782020	M10 x 1,0	18	25	55
DO69782021	M10 x 1,25	18	25	55
DO69782022	M10 x 1,5	17	25	55
DO69782025	M12 x 1,25	19	25	55
DO69782026	M12 x 1,5	19	25	55
DO69782027	M12 x 1,75	19	25	55
DO69782030	M14 x 1,5	23	25	55
DO69782031	M14 x 2,0	22	25	55
DO69782034	M16 x 1,5	28	30	75
DO69782035	M16 x 2,0	27	30	75
DO69782036	M18 x 1,5	29,5	30	75
DO69782038	M18 x 2,5	29	30	75
DO69782040	M20 x 1,5	30	30	75
DO69782041	M20 x 2,5	30	30	75



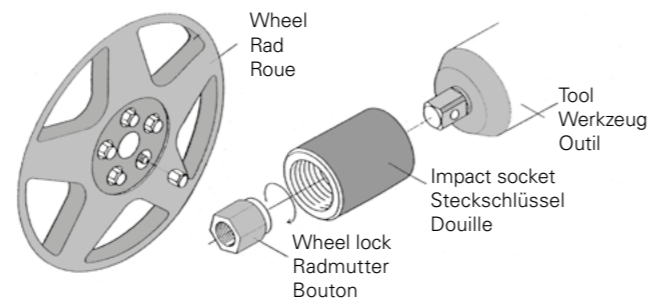
Drawing M



Drawing R

2 WHEEL LUG NUT REMOVER SOCKETS
RADMUTTERKRAFTSTECKSCHLÜSSEL
DOUILLES POUR DEPOSE DE BOULON DE ROUE

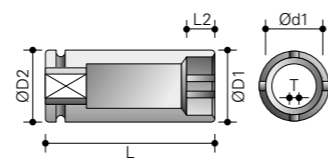
Type	mm	Drawing	D1 mm	D2 mm	L mm	L2 mm
DO69782090	17	R	24	24	38	17
DO69782091	18,5	R	25	25	38	17
DO69782092	20	R	26	26	38	22
DO69782093	21,5	R	28,5	28,5	38	22
DO69782094	23	R	30	30	38	22
DO69782095	24,5	R	31	31	38	22
DO69782096	26	R	32	32	38	22



This wheel lug nut remover is used when it is discovered that the original key to remove your car wheel is lost. In order to remove the lock and the wheel, these sockets can be used. Proper use of the socket is to have at least three windings of thread of the socket gripping over the lock. In case any of the first three windings are already gripping, the next bigger size of socket should be chosen. When the correct size of socket is chosen, it can unlock up to four bolts.

IMPACT SOCKETS FOR AXIAL NUTS
EINSÄTZE FÜR WELLENMUTTER
DOUILLES POUR ÉCROU DE BLOCAGE AXIAL

Type	T mm	D1 mm	D2 mm	d1 mm	L2 mm	L mm
DO69712530 GU06/30GU	4,5	46	30	38,5	6,5	55
DO69712725 KM6	4,5	46	30	34,5	9	82
DO69712730 KM6	4,5	53	30	41,5	9	82
DO69712740 KM8	4,5	81	30	53,5	9	82



PIN & RING | RING & STIFT | JOINT TORIQUE CLAVETTE

Type
DO1012-0-000



3/4" SQUARE DRIVE

VIERKANT | CARRÉ



4-POINT NORMAL 4-KANT NORMAL 4-PANS NORMALE

Type	mm	Drawing	D1 mm	D2 mm	L mm	L2 mm
Metrical · Metrisch · Metriques						
DO63045016	16	B	40	40	52	24
DO63045017	17	B	40	40	52	24
DO63045019	19	B	40	40	52	24
DO63045020	20	B	42	42	52	24
DO63045021	21	B	42	42	52	24
DO63045022	22	B	44	44	52	24
DO63045024	24	C	47	44	52	24

6-POINT NORMAL 6-KANT NORMAL 6-PANS NORMALE

Type	mm	Drawing	D1 mm	D2 mm	L mm	L2 mm
Metrical · Metrisch · Metriques						
DO3034-0-013	13	A	25	44	50	9
DO3034-0-014	14	A	25	44	50	11
DO3034-0-015	15	A	26	44	50	11
DO3034-0-016	16	A	27	44	50	11
DO3034-0-017	17	A	31	44	50	12
DO3034-0-018	18	A	32	44	50	13
DO3034-0-019	19	A	33	44	50	13
DO3034-0-020	20	A	34	44	50	14
DO3034-0-021	21	A	35	44	50	15
DO3034-0-022	22	A	37	44	50	15
DO3034-0-023	23	A	38	44	50	16
DO3034-0-024	24	A	40	44	50	16
DO3034-0-025	25	A	40	44	50	16
DO3034-0-026	26	A	41	44	50	16
DO3034-0-027	27	A	43	44	54	19
DO3034-0-028	28	B	44	44	54	19
DO3034-0-029	29	C	45	44	54	21
DO3034-0-030	30	C	47	44	54	21
DO3034-0-031	31	C	48	44	56	21
DO3034-0-032	32	C	49	44	56	22
DO3034-0-033	33	C	51	44	56	22
DO3034-0-034	34	C	52	44	56	22
DO3034-0-035	35	C	53	44	56	22
DO3034-0-036	36	C	54	44	56	25
DO3034-0-037	37	C	56	44	58	25
DO3034-0-038	38	C	57	44	58	25
DO3034-0-039	39	C	58	44	58	25
DO3034-0-040	40	C	58	44	58	25
DO3034-0-041	41	C	60	44	58	27
DO3034-0-042	42	C	62	44	58	27
DO3034-0-043	43	C	63	44	63	27
DO3034-0-044	44	C	65	44	63	27
DO3034-0-045	45	C	66	44	63	27
DO3034-0-046	46	C	67	44	63	30
DO3034-0-047	47	C	68	44	68	30
DO3034-0-049	49	C	70	44	70	30
DO3034-0-050	50	C	71	54	72	32
DO3034-0-055	55	C	77	54	74	35

6-POINT NORMAL (CONTINUED) 6-KANT NORMAL (FORTSETZUNG) 6-PANS NORMALE (SUITE)

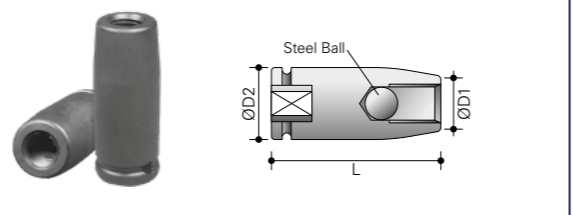
Type	mm	Drawing	D1 mm	D2 mm	L mm	L2 mm
Metrical · Metrisch · Metriques						
DO3034-0-056	56	C	80	54	74	35
DO3034-0-057	57	C	84	54	74	35
DO3034-0-060	60	C	84	54	75	37
DO3034-0-063	63	C	86	54	75	37
DO3034-0-065	65	C	88	54	78	40
DO3034-0-067	67	C	90	54	80	40
DO3034-0-070	70	C	96	54	80	40
DO3034-0-075	75	C	102	64	83	42

6-POINT NORMAL 6-KANT NORMAL 6-PANS NORMALE

Type	Drawing	D1 mm	D2 mm	L mm	L2 mm	
SAE · Zoll · Pouce						
DO3034-0-11/16	11/16"	A	29	38	50	12
DO3034-0-3/4	3/4"	A	30	38	50	14
DO3034-0-13/16	13/16"	A	32	38	52	16
DO3034-0-7/8	7/8"	A	34	38	52	16
DO3034-0-15/16	15/16"	A	36	38	52	16
DO3034-0-1	1"	C	40	38	52	16
DO3034-0-1 1/16	1 1/16"	C	40	38	52	16
DO3034-0-1 1/8	1 1/8"	B	42	42	52	20
DO3034-0-1 3/16	1 3/16"	B	44	44	52	20
DO3034-0-1 1/4	1 1/4"	B	44	44	52	20
DO3034-0-1 5/16	1 5/16"	C	47	44	56	23
DO3034-0-1 3/8	1 3/8"	C	50	44	56	23
DO3034-0-1 7/16	1 7/16"	C	51	44	56	23
DO3034-0-1 1/2	1 1/2"	C	53	44	56	23
DO3034-0-1 3/4	1 3/4"	C	65	44	62	27
DO3034-0-1 13/16	1 13/16"	C	67	44	56	32

STUD BOLT SETTERS STEBBOLZENSETZER PRISE GOUJON

Type	Size	D1 mm	D2 mm	L mm
DO69784162	M16 x 2	29	44	100
DO69784203	M20 x 2,5	35	44	100
DO69784241	M24 x 1,5	37	44	100
DO69784244	M24 x 3	37	44	100
DO69784274	M27 x 3	42	44	100
DO69784285	M28 x 3,5	42	44	100
DO69784305	M30 x 3,5	43	44	100



3/4" SQUARE DRIVE

VIERKANT | CARRÉ



6-POINT DEEP 6-KANT TIEF 6-PANS PROFONDE

Type	mm	Drawing	D1 mm	D2 mm	L mm	L2 mm
Metrical · Metrisch · Metriques						
DO3034-1-013	13	A	25	44	95	13
DO3034-1-014	14	A	25	44	95	14
DO3034-1-015	15	A	26	44	95	15
DO3034-1-017	17	A	31	44	95	17
DO3034-1-018	18	A	32	44	95	18
DO3034-1-019	19	A	33	44	95	19
DO3034-1-020	20	A	34	44	95	20
DO3034-1-021	21	A	35	44	95	21
DO3034-1-022	22	A	37	44	95	22
DO3034-1-023	23	A	38	44	95	23
DO3034-1-024	24	A	39,5	44	95	24
DO3034-1-025	25	A	40	44	95	25
DO3034-1-026	26	A	41	44	95	26
DO3034-1-027	27	A	43	44	95	27
DO3034-1-028	28	B	44	44	95	28
DO3034-1-029	29	C	45	44	95	29
DO3034-1-030	30	C	47	44	95	30
DO3034-1-031	31	C	48	44	95	31
DO3034-1-032	32	C	49	44	95	32
DO3034-1-033	33	C	51	44	95	33
DO3034-1-034	34	C	52	44	95	34
DO3034-1-035	35	C	53	44	95	35
DO3034-1-036	36	C	54	44	95	36
DO3034-1-037	37	C	56	44	95	37
DO3034-1-038	38	C	57	44	95	38
DO3034-1-039	39	C	58	44	95	38
DO3034-1-040	40	C	58	44	95	38
DO3034-1-041	41	C	60	44	95	38
DO3034-1-042	42	C	62	44	95	38
DO3034-1-043	43	C	63	44	95	38
DO3034-1-044	44	C	65	44	95	38
DO3034-1-046	46	C	67	44	95	38
DO3034-1-047	47	C	68	44	95	38
DO3034-1-048	48	C	69	44	95	38
DO3034-1-049	49	C	70	44	95	38
DO3034-1-050	50	C	71	54	95	38
DO3034-1-052	52	C	74	54	95	40
DO3034-1-055	55	C	77	54	100	40
DO3034-1-060	60	C	84	54	105	42
DO3034-1-065	65	C	88	54	105	66

6-POINT DEEP 6-KANT TIEF 6-PANS PROFONDE

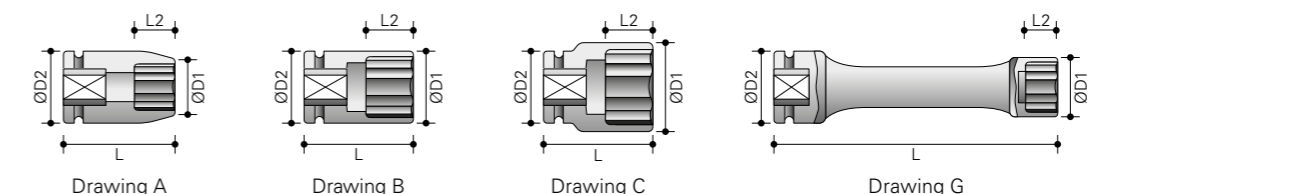
Type	Drawing	D1 mm	D2 mm	L mm	L2 mm	
SAE · Zoll · Pouce						
DO3034-1-13/16	13/16"	A	32	38	85	23
DO3034-1-7/8	7/8"	A	34	38	85	23
DO3034-1-15/16	15/16"	A	36	38	85	41
DO3034-1-1	1"	C	40	38	85	41
DO3034-1-1 1/8	1 1/8"	B	42	42	85	52
DO3034-1-1 3/16	1 3/16"	B	44	44	85	52
DO3034-1-1 1/4	1 1/4"	B	44	44	85	52
DO3034-1-1 5/16	1 5/16"	C	47	44	85	52
DO3034-1-1 7/16	1 7/16"	C	51	44	85	52
DO3034-1-1 1/2	1 1/2"	C	53	44	85	60

6-POINT EXTRA LONG 6-KANT EXTRA LANG 6-PANS EXTRA LONGUE

Type	Drawing	D1 mm	D2 mm	L mm	L2 mm	
Metrical · Metrisch · Metriques						
DO61145024	24	G	38,5	44	270	24
DO61145027	27	G	42	44	270	27
DO61145030	30	G	45	44	270	30
DO61145032	32	G	47	44	270	32
DO61145033	33	G	48	44	270	32
DO61145036	36	G	53,5	44	270	32
DO61145046	46	G	63	44	270	38
DO61146024	24	G	38,5	44	400	24
DO61146027	27	G	42	44	400	27
DO61146030	30	G	45	44	400	30
DO61146032	32	G	47	44	400	32
DO61146033	33	G	48	44	400	32
DO61146036	36	G	53,5	44	400	32

PIN & RING | RING & STIFT | JOINT TORIQUE CLAVETTE

Type
DO1034-0-000



3/4" SQUARE DRIVE

VIERKANT | CARRÉ



6-POINT THIN WALL DEEP 6-KANT DÜNNWANDIG TIEF 6-PANS PAROI MINCE PROFONDE

Type	Drawing	D1 mm	D2 mm	L mm	L2 mm	
Metrical · Metrisch · Metriques						
DO61141017	17	A	25,5	44	95	17
DO61141019	19	A	28,5	44	95	19
DO61141022	22	A	33,5	44	95	22
DO61141024	24	A	36,5	44	95	24
DO61141027	27	A	40,5	44	95	27
DO61141030	30	A	43,5	44	95	30
DO61141032	32	B	46,5	44	95	32
DO61141033	33	B	47,5	44	95	33
DO61141036	36	B	52	44	95	36
DO61141038	38	B	54	44	95	38
DO61141041	41	B	57	44	95	38

Thin wall sockets are not included in the Action warranty.

6-POINT EXTREME THIN WALL DEEP 6-KANT EXTREM DÜNNWANDIG TIEF 6-PANS EXTREME PAROI MINCE PROFONDE

Type	Drawing	D1 mm	D2 mm	L mm	L2 mm	
Metrical · Metrisch · Metriques						
DO61142027	27	A	40	43	108	43
DO61142032	32	B	45	45	108	43
DO61142041	41	C	54,5	45	108	43

Thin wall sockets are not included in the Action warranty.

HEX DRIVER (INBUS) AUSSEN-6-KANT (INBUS) EMPREINTE 6-PANS (INBUS)

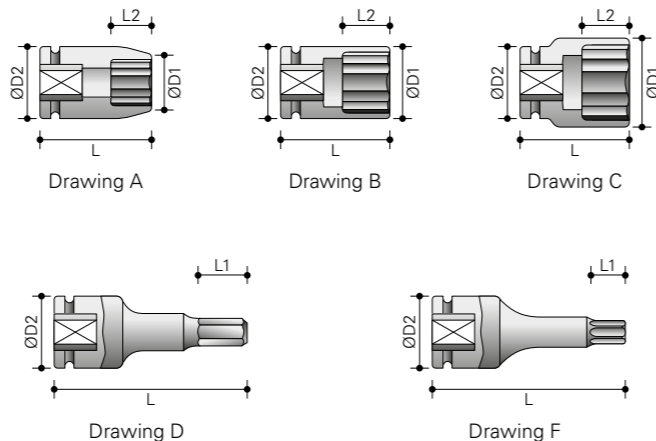
Type	Drawing	D2 mm	L mm	L1 mm	-	
Metrical · Metrisch · Metriques						
DO696510A	10	D	44	100	20	-
DO696512A	12	D	44	100	20	-
DO696514A	14	D	44	100	20	-
DO696517A	17	D	44	100	20	-
DO696519A	19	D	44	100	20	-
DO696522A	22	D	44	100	20	-
DO696524A	24	D	44	100	20	-
DO696527A	27	D	44	100	20	-
DO696530A	30	D	44	100	20	-
DO696532A	32	D	44	100	20	-
DO696536A	36	D	44	100	20	-

8-POINT NORMAL 8-KANT NORMAL 8-PANS NORMALE

Type	Drawing	D1 mm	D2 mm	L mm	L2 mm	
Metrical · Metrisch · Metriques						
DO63645019	19	B	41	41	52	15
DO63645024	24	C	46	44,5	52	20
DO63645027	27	C	53	44,5	56	24
DO63645030	30	C	60	44,5	60	28
DO63645032	32	C	60	44,5	60	28
DO63645038	38	C	70	44,5	64	32

12-POINT NORMAL 12-KANT NORMAL 12-PANS NORMALE

Type	Drawing	D1 mm	D2 mm	L mm	L2 mm	
Metrical · Metrisch · Metriques						
DO63845013	13	A	23	44	50	12
DO63845014	14	A	24	44	50	12
DO63845015	15	A	26	44	50	12
DO63845016	16	A	27	44	50	12
DO63845017	17	A	28	44	50	12
DO63845018	18	A	29	44	50	12
DO63845019	19	A	30	44	50	14
DO63845020	20	A	31	44	52	16
DO63845021	21	A	32	44	52	16
DO63845022	22	A	34	44	52	16
DO63845023	23	A	35	44	52	16
DO63845024	24	A	36	44	52	18
DO63845025	25	B	38	44	52	18
DO63845026	26	C	40	44	52	23
DO63845027	27	C	40	44	52	23
DO63845028	28	C	42	44	52	23
DO63845029	29	C	43	44	52	23
DO63845030	30	C	43	44	52	23
DO63845031	31	C	44	44	56	24
DO63845032	32	C	45	44	56	24
DO63845033	33	C	46	44	56	24
DO63845034	34	C	48	44	56	24
DO63845035	35	C	50	44	56	24
DO63845036	36	C	51	44	56	24
DO63845037	37	C	52	44	56	24
DO63845038	38	C	53	44	56	24
DO63845039	39	C	55	44	62	28
DO63845041	41	C	58	44	62	28
DO63845042	42	C	61	44	62	28
DO63845043	43	C	63	44	62	28
DO63845046	46	C	67	44	68	33
DO63845050	50	C	71	54	70	34
DO63845055	55	C	77	54	74	35
DO63845056	56	C	77	54	74	35
DO63845060	60	C	84	54	75	35
DO63845063	63	C	86	54	78	37
DO63845065	65	C	88	54	78	38
DO63845067	67	C	90	54	80	40
DO63845070	70	C	96	54	80	40



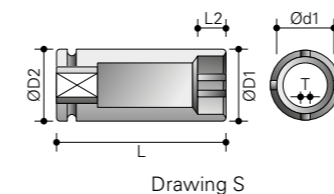
3/4" SQUARE DRIVE

VIERKANT | CARRÉ



12-POINT DEEP 12-KANT TIEF 12-PANS PROFONDE

Type	Drawing	D1 mm	D2 mm	L mm	L2 mm	
Metrical · Metrisch · Metriques						
DO65847013	13	A	24,5	44	95	13
DO65847014	14	A	25,5	44	95	14
DO65847015	15	A	27	44	95	15
DO65847016	16	A	28	44	95	16
DO65847017	17	A	29,5	44	95	17
DO65847018	18	A	31	44	95	18
DO65847019	19	A	32	44	95	19
DO65847020	20	A	34	44	95	20
DO65847021	21	A	35	44	95	21
DO65847022	22	A	37	44	95	22
DO65847023	23	A	38	44	95	23
DO65847024	24	A	39	44	95	24
DO65847025	25	A	41	44	95	25
DO65847026	26	A	42	44	95	26
DO65847027	27	A	43	44	95	27
DO65847028	28	B	44	44	95	28
DO65847029	29	C	46	44	95	29
DO65847030	30	C	47	44	95	30
DO65847031	31	C	48	44	95	31
DO65847032	32	C	49	44	95	32
DO65847033	33	C	51	44	95	33
DO65847034	34	C	52	44	95	34
DO65847035	35	C	53	44	95	35
DO65847036	36	C	54	44	95	36
DO65847037	37	C	56	44	95	37
DO65847038	38	C	57	44	95	38
DO65847039	39	C	58	44	95	38
DO65847040	40	C	59,5	44	95	38
DO65847041	41	C	61	44	95	38
DO65847042	42	C	62	44	95	38
DO65847043	43	C	63,5	44	95	38
DO65847044	44	C	64,5	44	95	38
DO65847045	45	C	65,5	44	95	38
DO65847046	46	C	66,5	44	100	38
DO65847047	47	C	68	44	100	38
DO65847048	48	C	69	44	100	38
DO65847049	49	C	70	44	100	38
DO65847050	50	C	71	54	100	38
DO65847051	51	C	72	54	100	40
DO65847052	52	C	74	54	100	40
DO65847053	53	C	75	54	100	40
DO65847055	55	C	78	54	105	40
DO65847056	56	C	79	54	105	40
DO65847057	57	C	80	54	105	40
DO65847058	58	C	81	54	105	40



12-POINT DEEP (CONTINUED) 12-KANT TIEF (FORTSETZUNG) 12-PANS PROFONDE (SUITE)

Type	Drawing	D1 mm	D2 mm	L mm	L2 mm	
Metrical · Metrisch · Metriques						
DO65847060	60	C	84	54	105	42
DO65847063	63	C	87	54	105	42
DO65847065	65	C	90	54	105	66
DO65847067	67	C	92	54	105	66
DO65847068	68	C	94	54	105	66
DO65847070	70	C	96	54	105	66
DO65847073	73	C	100	54	108	66
DO65847075	75	C	102	64	108	68

TORX® INTERNAL TORX® INNEN TORX® INTÉRIEURE

Type	Drawing	D2 mm	L mm	L1 mm	-	
Metrical · Metrisch · Metriques						
DO64742050	T50	F	44	100	5,0	-
DO64742055	T55	F	44	100	5,5	-
DO64742060	T60	F	44	100	8,0	-
DO64742070	T70	F	44	100	9,4	-
DO64742080	T80	F	44	100	10,5	-
DO64742090	T90	F	44	100	11,8	-
DO64742100	T100	F	44	100	13,1	-

Torx® is a trademark of Textron.

TORX® EXTERNAL TORX® AUSSEN TORX® EXTÉRIEURE

Type	Drawing	D1 mm	D2 mm	L mm	L2 mm	
Metrical · Metrisch · Metriques						
DO63340018	E18	A	25	44	56	12,5
DO63340020	E20	A	27	44	56	14
DO63340024	E24	A	33	44	56	16,5
DO63340032	E32	A	44	44	56	24,5

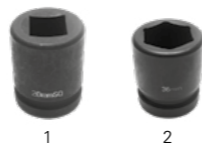
Torx® is a trademark of Textron.

IMPACT SOCKETS FOR AXIAL NUTS EINSÄTZE FÜR WELLENMUTTER DOUILLES POUR ÉCROU DE BLOCAGE AXIAL

Type	Draw.	T mm	D1 mm	D2 mm	d1 mm	L2 mm	L mm	
DO69714535	GU07/35GU	S	4,5	54	44	44,5	7	75
DO69714540	GU08/40GU	S	5,5	60	44	50,5	8,2	75
DO69714545	GU09/45GU	S	5,5	66	44	55,5	8,2	75
DO69714735	KM07/35KM	S	4,5	60,5	54	48,5	9	90
DO69714740	KM08/40KM	S	5,5	66,5	54	53,5	9	90
DO69714745	KM09/45KM	S	5,5	73,5	54	60,5	13,5	90
DO69714750	KM10/50KM	S	5,5	78,5	54	65,5	13,5	90
DO69714755	KM11/55KM	S	6,5	83,5	54	69,5	13,5	90
DO69714760	KM12/60KM	S	6,5	88,5	54	74,5	13,5	90
DO69714765	KM13/65KM	S	6,5	94	54	79,5	13,5	90

1" SQUARE DRIVE

VIERKANT | CARRÉ



4-POINT NORMAL 4-KANT NORMAL 4-PANS NORMALE

Type	Drawing	D1 mm	D2 mm	L mm	L2 mm
Metrical · Metrisch · Metriques					
DO63055017	17 B	52	52	57	24
DO63055019	19 B	52	52	57	24
DO63055020	20 B	52	52	57	24
DO63055021	21 B	52	52	57	24
DO63150100	1" A	52	54	60	30

6-POINT NORMAL 6-KANT NORMAL 6-PANS NORMALE

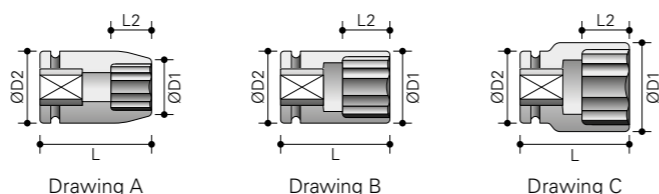
Type	Drawing	D1 mm	D2 mm	L mm	L2 mm
Metrical · Metrisch · Metriques					
DO4010-0-017	17 A	34	54	60	12
DO4010-0-018	18 A	35	54	60	13
DO4010-0-019	19 A	35,5	54	60	13
DO4010-0-020	20 A	37	54	60	14
DO4010-0-021	21 A	38	54	60	15
DO4010-0-022	22 A	40	54	60	15
DO4010-0-023	23 A	41	54	60	16
DO4010-0-024	24 A	42	54	60	18
DO4010-0-025	25 A	43	54	60	18
DO4010-0-026	26 A	44,5	54	60	18
DO4010-0-027	27 A	46	54	60	19
DO4010-0-028	28 A	47	54	62	19
DO4010-0-029	29 A	48	54	62	19
DO4010-0-030	30 A	50	54	62	21
DO4010-0-031	31 A	51	54	62	21
DO4010-0-032	32 A	52	54	62	22
DO4010-0-033	33 A	53	54	62	22
DO4010-0-034	34 C	55	54	62	22
DO4010-0-035	35 C	56	54	65	22
DO4010-0-036	36 C	57	54	67	25
DO4010-0-037	37 C	59	54	67	25
DO4010-0-038	38 C	59,5	54	67	25
DO4010-0-039	39 C	60	54	70	25
DO4010-0-040	40 C	62	54	70	25
DO4010-0-041	41 C	64	54	70	27
DO4010-0-042	42 C	65	54	74	27
DO4010-0-043	43 C	66	54	74	27
DO4010-0-045	45 C	68	54	74	27
DO4010-0-046	46 C	69,5	54	76	30
DO4010-0-047	47 C	72	54	76	32
DO4010-0-048	48 C	73	54	76	32
DO4010-0-050	50 C	74	54	80	35
DO4010-0-052	52 C	77	54	84	35
DO4010-0-053	53 C	78	54	84	35
DO4010-0-054	54 C	79	54	84	35
DO4010-0-055	55 C	81	54	84	35

6-POINT NORMAL (CONTINUED) 6-KANT NORMAL (FORTSETZUNG) 6-PANS NORMALE (SUITE)

Type	Drawing	D1 mm	D2 mm	L mm	L2 mm
Metrical · Metrisch · Metriques					
DO4010-0-056	56 C	83	54	84	40
DO4010-0-057	57 C	84	54	84	40
DO4010-0-058	58 C	85	54	87	40
DO4010-0-060	60 C	87	54	87	42
DO4010-0-062	62 C	89	54	87	42
DO4010-0-063	63 C	90	54	87	42
DO4010-0-065	65 C	93	54	90	42
DO4010-0-070	70 C	100	54	96	42
DO4010-0-075	75 C	106	86	98	45
DO4010-0-080	80 C	112	86	100	48
DO4010-0-085	85 C	118	86	105	52
DO4010-0-090	90 C	125	86	105	52
DO4010-0-095	95 C	131	86	115	52
DO4010-0-100	100 C	137	95	115	58
DO4010-0-105	105 C	143	95	115	58

6-POINT NORMAL 6-KANT NORMAL 6-PANS NORMALE

Type	Drawing	D1 mm	D2 mm	L mm	L2 mm
SAE · Zoll · Pouce					
DO4010-0-1	1" A	42	51	58	18
DO4010-0-1 1/8	1 1/8" A	46	51	58	19
DO4010-0-1 5/16	1 5/16" C	53	52	62	21
DO4010-0-1 7/16	1 7/16" C	56	52	62	26
DO4010-0-1 1/2	1 1/2" C	58	52	62	26
DO4010-0-1 11/16	1 11/16" C	65	52	64	27
DO4010-0-1 7/8	1 7/8" C	70	58	66	28
DO4010-0-2 1/16	2 1/16" C	75	58	70	31
DO4010-0-2 1/4	2 1/4" C	84	62	75	34
DO4010-0-2 7/16	2 7/16" C	89	62	78	35
DO4010-0-2 1/2	2 1/2" C	91	62	80	36
DO4010-0-2 7/8	2 7/8" C	102	62	87	41



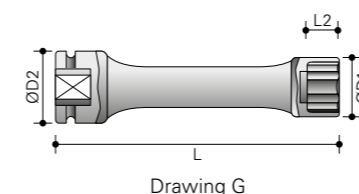
1" SQUARE DRIVE

VIERKANT | CARRÉ



6-POINT DEEP 6-KANT TIEF 6-PANS PROFONDE

Type	Drawing	D1 mm	D2 mm	L mm	L2 mm
Metrical · Metrisch · Metriques					
DO4010-1-017	17 A	34	54	100	17
DO4010-1-018	18 A	34	54	100	18
DO4010-1-019	19 A	35,5	54	100	19
DO4010-1-020	20 A	36,5	54	100	20
DO4010-1-021	21 A	37,5	54	100	21
DO4010-1-022	22 A	40	54	100	22
DO4010-1-023	23 A	41	54	100	23
DO4010-1-024	24 A	42	54	100	24
DO4010-1-025	25 A	43	54	100	25
DO4010-1-026	26 A	44,5	54	100	26
DO4010-1-027	27 A	46	54	100	27
DO4010-1-028	28 A	47	54	100	28
DO4010-1-029	29 A	48	54	100	29
DO4010-1-030	30 A	50	54	100	30
DO4010-1-031	31 A	51	54	100	31
DO4010-1-032	32 A	52	54	100	32
DO4010-1-033	33 A	53	53	100	33
DO4010-1-034	34 C	55	54	100	34
DO4010-1-035	35 C	56	54	100	35
DO4010-1-036	36 C	57	54	100	36
DO4010-1-037	37 C	57	54	100	37
DO4010-1-038	38 C	59,5	54	100	38
DO4010-1-039	39 C	61	54	100	38
DO4010-1-040	40 C	62	54	100	38
DO4010-1-041	41 C	64	54	100	38
DO4010-1-042	42 C	65	54	100	38
DO4010-1-046	46 C	69,5	54	100	38
DO4010-1-047	47 C	71,5	54	100	38
DO4010-1-048	48 C	72,5	54	100	38
DO4010-1-050	50 C	75	54	100	38
DO4010-1-054	54 C	80	54	100	40
DO4010-1-055	55 C	81	54	100	40
DO4010-1-056	56 C	82	54	105	40
DO4010-1-058	58 C	85	54	105	40
DO4010-1-060	60 C	87	54	120	42
DO4010-1-065	65 C	93	54	125	42
DO4010-1-070	70 C	100	54	125	42
DO4010-1-075	75 C	106	86	135	45
DO4010-1-080	80 C	112	86	135	48
DO4010-1-085	85 C	118	86	140	52
DO4010-1-090	90 C	125	86	140	52
DO4010-1-095	95 C	131	86	140	52
DO4010-1-100	100 C	137	95	140	58
DO4010-1-105	105 C	143	95	155	58
DO4010-1-110	110 C	149	95	155	60
DO4010-1-115	115 C	155	95	155	62



6-POINT DEEP 6-KANT TIEF 6-PANS PROFONDE

Type	Drawing	D1 mm	D2 mm	L mm	L2 mm
SAE · Zoll · Pouce					
DO4010-1-15/16	15/16" A	40	51	90	21
DO4010-1-1	1" A	42	51	90	25
DO4010-1-1 1/16	1 1/16" A	44	51	90	23
DO4010-1-1 3/16	1 3/16" A	48	51	90	40
DO4010-1-1 5/16	1 5/16" C	53	52	90	40
DO4010-1-1 1/2	1 1/2" C	58	52	92	54

6-POINT THIN WALL DEEP 6-KANT DÜNNWANDIG TIEF 6-PANS PAROI MINCE PROFONDE

Type	Drawing	D1 mm	D2 mm	L mm	L2 mm
Metrical · Metrisch · Metriques					
DO61151019	19 A	33	54	100	19
DO61151024	24 A	38	54	100	24
DO61151027	27 A	42,5	54	100	27
DO61151028	28 A	43	54	100	28
DO61151030	30 A	45	54	100	30
DO61151032	32 A	47	54	100	32
DO61151033	33 A	49	54	100	33
DO61151036	36 A	52	54	100	36
DO61151041	41 C	57	54	100	38

6-POINT EXTRA DEEP 6-KANT EXTRA TIEF 6-PANS EXTRA PROFONDE

Type	Drawing	D1 mm	D2 mm	L mm	L2 mm
Metrical · Metrisch · Metriques					
DO60559024	24 G	42	54	270	24
DO60559027	27 G	45	54	270	27
DO60559030	30 G	50	54	270	30
DO60559032	32 G	52	54	270	32
DO60559033	33 G	52	54	270	32
DO60559036	36 G	57	54	270	36
DO6115H032	32 G	48,5	54	400	32
DO6115H033	33 G	50	54	400	32

1" SQUARE DRIVE

VIERKANT | CARRÉ



8-POINT NORMAL
8-KANT NORMAL
8-PANS NORMALE

Type	Drawing	D1 mm	D2 mm	L mm	L2 mm	
Metrical · Metrisch · Metriques						
DO63655019	19	A	45	54	60	13
DO63655024	24	A	52	54	60	18
DO63655027	27	C	56,5	54	60	19
DO63655030	30	C	61	54	62	21
DO63655032	32	C	64	54	62	22
DO63655035	35	C	68,5	58	65	22
DO63655038	38	C	73	58	67	24
DO63655046	46	C	86	62	76	30

12-POINT NORMAL
12-KANT NORMAL
12-PANS NORMALE

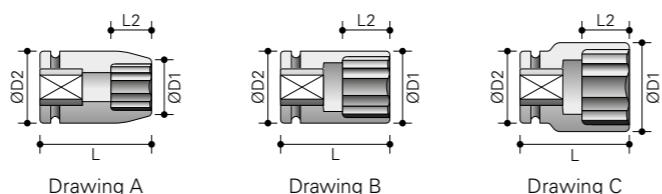
Type	Drawing	D1 mm	D2 mm	L mm	L2 mm	
Metrical · Metrisch · Metriques						
DO65855016	16	A	32	54	60	11
DO65855017	17	A	34	54	60	11
DO65855018	18	A	35	54	60	13
DO65855019	19	A	36	54	60	13
DO65855020	20	A	37	54	60	13
DO65855021	21	A	38	54	60	15
DO65855022	22	A	39	54	60	15
DO65855023	23	A	40	54	60	15
DO65855024	24	A	41	54	60	18
DO65855025	25	A	43	54	60	18
DO65855026	26	A	44,5	54	60	18
DO65855027	27	A	45	54	60	19
DO65855028	28	A	46,5	54	62	19
DO65855029	29	A	48	54	62	19
DO65855030	30	A	50	54	62	21
DO65855031	31	A	51	54	62	21
DO65855032	32	A	52	54	62	22
DO65855033	33	A	53	54	62	22
DO65855034	34	C	55	54	62	22
DO65855035	35	C	56	54	65	22
DO65855036	36	C	57	54	67	24
DO65855037	37	C	59	54	67	24
DO65855038	38	C	60	54	67	24
DO65855039	39	C	61	54	70	24
DO65855040	40	C	62	54	70	24
DO65855041	41	C	63,5	54	70	27
DO65855042	42	C	65	54	74	27
DO65855043	43	C	66	54	74	27
DO65855044	44	C	67	54	74	27
DO65855045	45	C	68	54	74	27
DO65855046	46	C	70	58	76	30

12-POINT NORMAL (CONTINUED)
12-KANT NORMAL (FORTSETZUNG)
12-PANS NORMALE (SUITE)

Type	Drawing	D1 mm	D2 mm	L mm	L2 mm	
Metrical · Metrisch · Metriques						
DO65855047	47	C	71,5	58	76	30
DO65855048	48	C	72,5	58	76	30
DO65855050	50	C	75	62	80	32
DO65855051	51	C	76	62	80	32
DO65855052	52	C	77	62	84	32
DO65855053	53	C	78	62	84	32
DO65855054	54	C	80	62	84	32
DO65855055	55	C	81	62	84	35
DO65855056	56	C	82	62	84	35
DO65855057	57	C	84	62	84	35
DO65855058	58	C	85	62	87	37
DO65855060	60	C	87	62	87	37
DO65855062	62	C	89	62	87	37
DO65855063	63	C	90	62	87	37
DO65855065	65	C	93	62	90	40
DO65855067	67	C	96	62	92	40
DO65855070	70	C	100	62	96	40
DO65855075	75	C	106	86	98	42
DO65855076	76	C	107	86	100	45
DO65855077	77	C	109	86	100	45
DO65855078	78	C	110	86	100	45
DO65855080	80	C	112	86	100	45
DO65855085	85	C	118	86	105	52
DO65855090	90	C	125	86	105	52
DO65855095	95	C	131	86	105	52
DO65855100	100	C	137	86	110	58
DO65855105	105	C	143	95	110	58
DO65855110	110	C	149	95	115	62
DO65855115	115	C	155	95	115	62

IMPACT SOCKETS FOR AXIAL NUTS
EINSÄTZE FÜR WELLENMUTTER
DOUILLES POUR ÉCROU DE BLOCAGE AXIAL

Type	Drawing	T mm	D1 mm	D2 mm	d1 mm	L2 mm	L mm
DO69715770 KM14/70KM	S	7,5	103	86	85,5	12	110
DO69715775 KM15/75KM	S	7,5	109	86	91,5	13	110
DO69715780 KM16/80KM	S	7,5	116	86	98,5	15	110
DO69715785 KM17/85KM	S	7,5	121	86	103,5	16	110
DO69715790 KM18/90KM	S	9,5	131	86	112,5	16	110



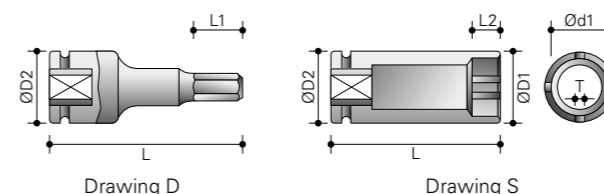
1" SQUARE DRIVE

VIERKANT | CARRÉ



12-POINT DEEP
12-KANT TIEF
12-PANS PROFONDE

Type	Drawing	D1 mm	D2 mm	L mm	L2 mm	
Metrical · Metrisch · Metriques						
DO65857016	16	A	32	54	100	11
DO65857017	17	A	34	54	100	11
DO65857018	18	A	35	54	100	13
DO65857019	19	A	36	54	100	13
DO65857020	20	A	37	54	100	13
DO65857021	21	A	38	54	100	15
DO65857022	22	A	39	54	100	15
DO65857023	23	A	40	54	100	15
DO65857024	24	A	41	54	100	18
DO65857025	25	A	43	54	100	18
DO65857026	26	A	44,5	54	100	18
DO65857027	27	A	45	54	100	19
DO65857028	28	A	46,5	54	100	19
DO65857029	29	A	48	54	100	19
DO65857030	30	A	50	54	100	21
DO65857031	31	A	51	54	100	21
DO65857032	32	A	52	54	100	22
DO65857033	33	A	53	54	100	22
DO65857034	34	C	55	54	100	22
DO65857035	35	C	56	54	100	22
DO65857036	36	C	57	54	100	24
DO65857037	37	C	59	54	100	24
DO65857038	38	C	60	54	100	24
DO65857039	39	C	61	54	100	24
DO65857040	40	C	62	54	100	24
DO65857041	41	C	63,5	54	100	27
DO65857042	42	C	65	54	100	27
DO65857043	43	C	66	54	100	27
DO65857044	44	C	67	54	100	27
DO65857045	45	C	68	54	100	27
DO65857046	46	C	70	58	100	30
DO65857047	47	C	71,5	58	100	30
DO65857048	48	C	72,5	58	100	30
DO65857050	50	C	75	62	100	32
DO65857051	51	C	76	62	100	32
DO65857052	52	C	77	62	100	32
DO65857053	53	C	78	62	100	32
DO65857054	54	C	80	62	100	32
DO65857055	55	C	81	62	100	35
DO65857056	56	C	82	62	105	35
DO65857057	57	C	84	62	105	35
DO65857058	58	C	85	62	105	37
DO65857060	60	C	87	62	120	37
DO65857062	62	C	89	62	120	37
DO65857063	63	C	90	62	120	37
DO65857065	65	C	93	62	125	40



12-POINT DEEP (CONTINUED)
12-KANT TIEF (FORTSETZUNG)
12-PANS PROFONDE (SUITE)

Type	Drawing	D1 mm	D2 mm	L mm	L2 mm	
Metrical · Metrisch · Metriques						
DO65857067	67	C	96	62	125	40
DO65857070	70	C	100	62	125	40
DO65857075	75	C	106	86	135	42
DO65857076	76	C	107	86	135	45
DO65857077	77	C	109	86	135	45
DO65857078	78	C	110	86	135	45
DO65857080	80	C	112	86	135	45
DO65857085	85	C	118	86	140	52
DO65857090	90	C	125	86	140	52
DO65857095	95	C	131	86	140	52
DO65857100	100	C	137	86	140	58
DO65857105	105	C	143	95	155	58
DO65857110	110	C	149	95	155	62
DO65857115	115	C	155	95	155	62

HEX DRIVER (INBUS)
AUSSEN-6-KANT (INBUS)
EMPREINTE 6-PANS (INBUS)

Type	Drawing	D2 mm	L mm	L1 mm		
Metrical · Metrisch · Metriques						
DO696610A	10	D	54	100	20	-
DO696612A	12	D	54	100	20	-
DO696614A	14	D	54	100	20	-
DO696617A	17	D	54	100	20	-
DO696619A	19	D	54	100	20	-
DO696622A	22	D	54	100	20	-
DO696622B	22	D	54	140	20	-
DO696624A	24	D	54	100	20	-
DO696627A	27	D	54	100	20	-
DO696630A	30	D	54	100	24	-
DO696632A	32	D	54	100	24	-
DO696636A	36	D	54	100	28	-

PIN & RING | RING & STIFT | JOINT TORIQUE CLAVETTE

Type	D2 mm
DO1100-0-000	54
DO1100-0-086	86
DO1100-0-095	95



1 1/2" SQUARE DRIVE

VIERKANT | CARRÉ

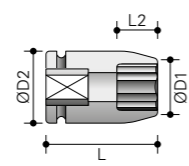


1
6-POINT NORMAL
6-KANT NORMAL
6-PANS NORMALE

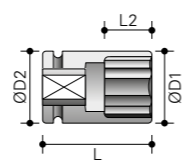
Type	Drawing	D1 mm	D2 mm	L mm	L2 mm	
Metrical · Metrisch · Métriques						
DO5112-0-030	30	A	56	86	78	21
DO5112-0-032	32	A	58	86	78	22
DO5112-0-035	35	A	62	86	78	22
DO5112-0-036	36	A	64	86	78	24
DO5112-0-037	37	A	65	86	78	24
DO5112-0-038	38	A	66	86	78	26
DO5112-0-040	40	A	68	86	78	28
DO5112-0-041	41	A	70	86	80	28
DO5112-0-045	45	A	75	86	84	30
DO5112-0-046	46	A	76	86	84	30
DO5112-0-047	47	A	77	86	84	32
DO5112-0-048	48	A	79	86	84	32
DO5112-0-050	50	A	81	87	87	32
DO5112-0-052	52	A	83	86	87	34
DO5112-0-054	54	B	86	86	90	37
DO5112-0-055	55	B	86	86	90	37
DO5112-0-056	56	B	86	86	92	37
DO5112-0-058	58	C	92	86	92	39
DO5112-0-060	60	C	93	86	92	39
DO5112-0-061	61	C	95	86	95	42
DO5112-0-062	62	C	96	86	95	42
DO5112-0-065	65	C	97	86	95	42
DO5112-0-068	68	C	104	86	100	46
DO5112-0-070	70	C	105	86	100	46
DO5112-0-072	72	C	108	86	108	49
DO5112-0-075	75	C	110	86	108	49
DO5112-0-078	78	C	115	86	115	53
DO5112-0-080	80	C	116	86	115	53
DO5112-0-085	85	C	125	86	118	56
DO5112-0-090	90	C	130	86	123	59
DO5112-0-095	95	C	137	95	123	62
DO5112-0-100	100	C	140	95	130	65
DO5112-0-105	105	C	150	95	130	68
DO5112-0-110	110	C	156	95	135	72
DO5112-0-115	115	C	160	95	140	77
DO5112-0-125	125	C	175	127	140	77

2
6-POINT DEEP
6-KANT TIEF
6-PANS PROFONDE

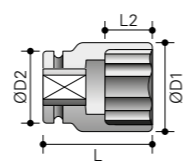
Type	Drawing	D1 mm	D2 mm	L mm	L2 mm	
Metrical · Metrisch · Métriques						
DO5112-1-036	36	A	64	86	115	24
DO5112-1-041	41	A	70	86	115	28
DO5112-1-042	42	A	71	86	115	28
DO5112-1-046	46	A	76	86	115	30
DO5112-1-050	50	A	81	86	135	34
DO5112-1-054	54	B	86	86	140	37
DO5112-1-055	55	B	86	86	140	37
DO5112-1-056	56	B	88	86	140	37
DO5112-1-060	60	C	94	86	150	39
DO5112-1-063	63	C	97	86	150	42
DO5112-1-065	65	C	100	86	150	42
DO5112-1-070	70	C	106	86	160	46
DO5112-1-075	75	C	112	86	170	49
DO5112-1-080	80	C	119	86	170	53
DO5112-1-085	85	C	125	86	170	56
DO5112-1-090	90	C	131	86	170	59
DO5112-1-095	95	C	137	95	180	61
DO5112-1-100	100	C	144	95	190	65
DO5112-1-105	105	C	154	95	190	68
DO5112-1-110	110	C	157	95	200	72
DO5112-1-115	115	C	164	95	210	77
DO5112-1-120	120	C	167	95	210	77
DO5112-1-125	125	C	174	127	210	77



Drawing A



Drawing B



Drawing C

1 1/2" & 2 1/2" SQUARE DRIVE

VIERKANT | CARRÉ



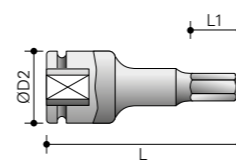
1 1/2" Drive | Antrieb | Carré d'entraînement

1
HEX DRIVER (INBUS)
AUSSEN-6-KANT (INBUS)
EMPREINTE 6-PANS (INBUS)

Type	Drawing	D2 mm	L mm	L1 mm	-	
Metrical · Metrisch · Métriques						
DO64866019	19	D	86	105	20	-
DO64866022	22	D	86	105	20	-
DO64866024	24	D	86	105	20	-
DO64866027	27	D	86	105	20	-
DO64866030	30	D	86	105	20	-
DO64866032	32	D	86	105	20	-
DO64866033	33	D	86	105	20	-
DO64866041	41	D	86	105	20	-
DO64866046	46	D	86	105	20	-
DO64866050	50	D	86	105	20	-
DO64866055	55	D	86	105	20	-
DO64865019	19	D	86	120	20	-
DO64865022	22	D	86	120	20	-
DO64865024	24	D	86	120	20	-
DO64865027	27	D	86	120	20	-
DO64865030	30	D	86	120	24	-
DO64865032	32	D	86	120	24	-
DO64865033	33	D	86	120	24	-
DO64865036	36	D	86	120	28	-
DO64865038	38	D	86	120	28	-
DO64865041	41	D	86	120	34	-
DO64865046	46	D	86	120	38	-
DO64865050	50	D	86	120	38	-
DO64865055	55	D	86	120	43	-

PIN & RING | RING & STIFT | JOINT TORIQUE CLAVETTE

Type	D2 mm
DO1112-0-000	86
DO1112-0-095	95
DO1112-0-127	127



Drawing D

2 1/2" Drive | Antrieb | Carré d'entraînement

2
6-POINT NORMAL
6-KANT NORMAL
6-PANS NORMALE

Type	Drawing	D1 mm	D2 mm	L mm	L2 mm	
Metrical · Metrisch · Métriques						
DO6212-0-060	60	A	99	127	125	37
DO6212-0-065	65	A	105	127	130	40
DO6212-0-070	70	A	110	127	130	40
DO6212-0-075	75	A	118	127	140	42
DO6212-0-080	80	A	124	127	140	45
DO6212-0-085	85	C	130	127	140	52
DO6212-0-090	90	C	136	127	145	52
DO6212-0-095	95	C	143	127	145	52
DO6212-0-100	100	C	149	127	150	58
DO6212-0-105	105	C	155	127	155	58
DO6212-0-110	110	C	161	127	160	60
DO6212-0-115	115	C	167	127	165	62
DO6212-0-120	120	C	176	127	170	67
DO6212-0-125	125	C	184	127	175	72
DO6212-0-130	130	C	188	152	175	72
DO6212-0-135	135	C	195	152	180	77
DO6212-0-140	140	C	204	152	180	77
DO6212-0-145	145	C	207	152	185	83
DO6212-0-150	150	C	214	152	185	83
DO6212-0-155	155	C	224	152	190	90
DO6212-0-160	160	C	227	152	190	90
DO6212-0-165	165	C	234	152	195	95
DO6212-0-170	170	C	244	152	195	95
DO6212-0-175	175	C	247	152	200	100
DO6212-0-180	180	C	254	152	200	100
DO6212-0-185	185	C	257	152	210	105
DO6212-0-190	190	C	265	152	210	105
DO6212-0-200	200	C	275	152	220	110

PIN & RING | RING & STIFT | JOINT TORIQUE CLAVETTE

Type
DO2112-0-000





YOKOTA

Blank screen

F1 F2 F3 F4

7

8

4

Navigation arrows

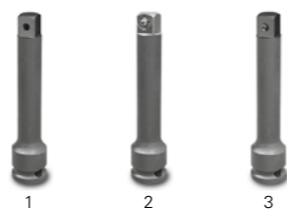
YOKOTA INDUSTRIAL CO., LTD.
www.yokota.co.jp

YOKOTA
YZ-1600

YOKOTA
Li-Ion 18V 2.0Ah

ADAPTORS

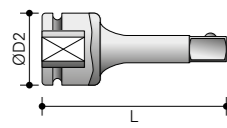
ADAPTER | ADAPTATEURS



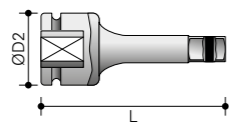
EXTENSION BARS WITH PIN HOLE
VERLÄNGERUNGEN MIT STIFTLOCH
RALLONGES À CLIQUET FEMELLE

Type	Drawing	D2 mm	L mm
SAE - Zoll - Pouce			
DO7014-0-050	1/4"	BX	13
DO7014-0-100	1/4"	BX	13
DO7014-0-150	1/4"	BX	13
DO7038-0-075	3/8"	BX	19
DO7038-0-100	3/8"	BX	19
DO7038-0-125	3/8"	BX	19
DO7038-0-150	3/8"	BX	19
DO7038-0-200	3/8"	BX	19
DO7038-0-250	3/8"	BX	19
DO7012-0-075	1/2"	BX	25
DO7012-0-100	1/2"	BX	25
DO7012-0-125	1/2"	BX	25
DO7012-0-150	1/2"	BX	25
DO7012-0-175	1/2"	BX	25
DO7012-0-200	1/2"	BX	25
DO7012-0-250	1/2"	BX	25
DO7012-0-300	1/2"	BX	25
DO7012-0-460	1/2"	BX	25
DO7012-0-610	1/2"	BX	25
DO7012-0-915	1/2"	BX	25
DO7034-0-075	3/4"	BX	44
DO7034-0-100	3/4"	BX	44
DO7034-0-125	3/4"	BX	44
DO7034-0-150	3/4"	BX	44
DO7034-0-175	3/4"	BX	44
DO7034-0-200	3/4"	BX	44
DO7034-0-250	3/4"	BX	44
DO7034-0-330	3/4"	BX	44
DO7034-0-400	3/4"	BX	44
DO7100-0-075	1"	BX	54
DO7100-0-100	1"	BX	54
DO7100-0-125	1"	BX	54
DO7100-0-150	1"	BX	54
DO7100-0-175	1"	BX	54
DO7100-0-200	1"	BX	54
DO7100-0-250	1"	BX	54
DO7100-0-300	1"	BX	54
DO7100-0-330	1"	BX	54
DO7100-0-350	1"	BX	54
DO7100-0-400	1"	BX	54
DO7112-0-125	1 1/2"	BX	86
DO7112-0-250	1 1/2"	BX	86
DO7112-0-500	1 1/2"	BX	86
DO7212-0-250	2 1/2"	BX	127
DO7212-0-500	2 1/2"	BX	127

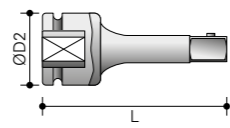
Rings and pins are not standard. Please order separately.



Drawing AX



Drawing BX



Drawing CX

EXTENSION BARS WITH STEEL BALL RETAINER
VERLÄNGERUNGEN MIT KUGELSICHERUNG
RALLONGES À CLIQUET BILLE D'ACIER

Type	Drawing	D2 mm	L mm
SAE - Zoll - Pouce			
DO6862075	3/8"	AX	19
DO6862100	3/8"	AX	19
DO6862125	3/8"	AX	19
DO6862150	3/8"	AX	19
DO6862250	3/8"	AX	19
DO6863075	1/2"	AX	25
DO6863100	1/2"	AX	25
DO6863125	1/2"	AX	25
DO6863250	1/2"	AX	25

EXTENSION BAR WITH LOCK PIN RETAINER
VERLÄNGERUNGEN MIT SICHERUNGSSTIFT
RALLONGES À CLIQUET MÂLE

Type	Drawing	D2 mm	L mm
SAE - Zoll - Pouce			
DO64514075	3/8"	CX	19
DO64514100	3/8"	CX	19
DO64514125	3/8"	CX	19
DO64514150	3/8"	CX	19
DO64514200	3/8"	CX	19
DO64514250	3/8"	CX	19
DO64524075	1/2"	CX	25
DO64524100	1/2"	CX	25
DO64524125	1/2"	CX	25
DO64524150	1/2"	CX	25
DO64524200	1/2"	CX	25
DO64524250	1/2"	CX	25
DO64524460	1/2"	CX	25

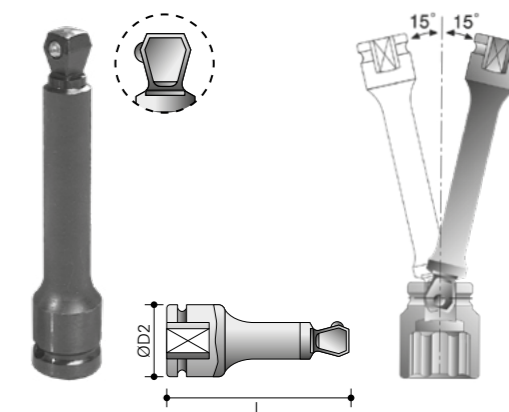
3

ADAPTORS

ADAPTER | ADAPTATEURS

WOBBLE EXTENSION BARS
WOBBLE-VERLÄNGERUNGEN
RALLONGES WOBBLE

Type	Drawing	D2 mm	L mm	Type	
SAE - Zoll - Pouce					
DO6450F050	1/4"	1/4"	13	50	Steel ball retainer
DO6450F075	1/4"	1/4"	13	75	Steel ball retainer
DO6450F100	1/4"	1/4"	13	100	Steel ball retainer
DO6451F050	3/8"	3/8"	19	50	Steel ball retainer
DO6451F075	3/8"	3/8"	19	75	Steel ball retainer
DO6451F100	3/8"	3/8"	19	100	Steel ball retainer
DO6451F200	3/8"	3/8"	19	200	Steel ball retainer
DO6452F075	1/2"	1/2"	25	75	Steel ball retainer
DO6452F125	1/2"	1/2"	25	125	Steel ball retainer
DO6452F150	1/2"	1/2"	25	150	Steel ball retainer
DO6452F200	1/2"	1/2"	25	200	Steel ball retainer



JOINTS | KUGELGELENKE | CARDANS

UNIVERSAL JOINTS WITH STEEL BALL
KUGELGELENKE MIT KUGELSICHERUNG
CARDANS À CLIQUET MÂLE

Type	Drawing	D2 mm	L mm		
SAE - Zoll - Pouce					
DO6781F1T	1/4"	1/4"	AJ	16	43
DO6782F2T	3/8"	3/8"	AJ	24	50
DO6783F3T	1/2"	1/2"	AJ	32	60
DO6784F4T	3/4"	3/4"	AJ	44	90

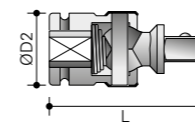


UNIVERSAL JOINTS WITH PIN HOLE
KUGELGELENKE MIT STIFTLOCH
CARDANS À CLIQUET FEMELLE

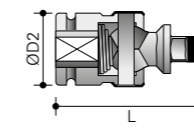
Type	Drawing	D2 mm	L mm		
SAE - Zoll - Pouce					
DO64302008	1/4"	1/4"	BJ	16	43
DO9038-0-000	3/8"	3/8"	BJ	24	50
DO9012-0-000	1/2"	1/2"	BJ	32	60
DO9034-0-000	3/4"	3/4"	BJ	44	105
DO9100-0-000	1"	1"	BJ	54	110
DO9112-0-000	1 1/2"	1 1/2"	BJ	86	182



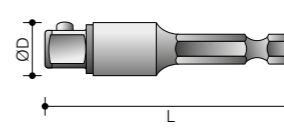
Rings and pins are not standard. Please order separately.



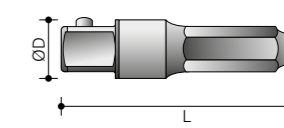
Drawing AJ



Drawing BJ



Drawing CD



Drawing DD

ADAPTORS | ADAPTER | ADAPTATEURS

ADAPTORS EXT. SQUARE - EXTERNAL HEX
VERBINDUNGSTEIL MIT AUSSENVIERKANT
ADAPTATEURS D'IMPACT

Type	Drawing	D mm	L mm		
SAE - Zoll - Pouce					
DO69306050	1/4"	1/4"	CD	9	50
DO69306075	1/4"	1/4"	CD	9	75
DO69306100	1/4"	1/4"	CD	9	100
DO69306150	1/4"	1/4"	CD	9	150
DO69316050	3/8"	1/4"	CD	13	50
DO69316075	3/8"	1/4"	CD	13	75
DO69316100	3/8"	1/4"	CD	13	100
DO69318075	3/8"	7/16"	DD	13	75
DO6932E050	1/2"	1/4"	CD	17	50
DO69328075	1/2"	7/16"	DD	17	75



ADAPTORS

ADAPTER | ADAPTATEURS



ADAPTORS WITH PIN HOLE
ADAPTER MIT STIFTLOCH
ADAPTATEURS À CLIQUET FEMELLE

Type	Drawing	D2 mm	L mm
DO8014-0-038	1/4"	3/8"	AD 13 26
DO8038-0-014	3/8"	1/4"	AD 22 32
DO8038-0-012	3/8"	1/2"	AD 22 36
DO8012-0-034	1/2"	3/4"	AD 30 48
DO8012-0-038	1/2"	3/8"	AD 26 38
DO8034-0-012	3/4"	1/2"	AD 40 58
DO8034-0-100	3/4"	1"	AD 40 63
DO8100-0-034	1"	3/4"	AD 52 80
DO8100-0-112	1"	1 1/2"	AD 52 91
DO8112-0-100	1 1/2"	1"	AD 84 95
DO8112-0-212	1 1/2"	2 1/2"	AD 86 120
DO8134-0-112	1 3/4"	1 1/2"	AD 127 153
DO8212-0-112	2 1/2"	1 1/2"	AD 127 138

ADAPTORS WITH STEEL BALL
ADAPTER MIT KUGELSICHERUNG
ADAPTATEURS À CLIQUET MÂLE

Type	Drawing	D2 mm	L mm
DO64001012	1/4"	3/8"	AD 13,6 26
DO64011008	3/8"	1/4"	AD 22 32
DO6822F3T	3/8"	1/2"	AD 22 36
DO6823F2T	1/2"	3/8"	AD 25 38
DO64021024	1/2"	3/4"	AD 30 48
DO6815L3T	3/4"	1/2"	AD 44 56
DO64041100	3/4"	1"	AD 40 63
DO64051024	1"	3/4"	AD 54 75

MAGNETIC REDUCING ADAPTORS
MAGNETISCHE ADAPTER
ADAPTATEURS MAGNÉTIQUE

Type	Drawing	D2 mm	L mm
DO69880P12	1/4"	3/8"	AM 19 17
DO69880P16	1/4"	1/2"	AM 25 22
DO69881P16	3/8"	1/2"	AM 25 22
DO69882P20	1/2"	5/8"	AM 35 23
DO69882P24	1/2"	3/4"	AM 44 30
DO69884P32	3/4"	1"	BM 54 35
DO69885P48	1"	1 1/2"	BM 86 50
DO69886P80	1 1/2"	2 1/2"	BM 127 59
DO69888P01	2 1/2"	3 1/2"	BM 176 95

The magnetic sleeve adaptors allow the temporary use of bigger impact sockets on smaller tools. By means of magnet, chances of losing the adaptor are reduced. Especially well suited for the service kit of a traveling mechanic tasked with the servicing of heavy equipment.



HEX DRIVERS - 7/16"
SECHSKANTBITS - 7/16"
EMBOUS HEXAGONAL - 7/16"

Type	Drawing	L1 mm	L mm
Metrical · Metrisch · Métriques			
DO697RG606	7/16"	EH 6 6 60	
DO697RG608	7/16"	EH 8 8 60	
DO697RG610	7/16"	EH 10 10 60	
DO697RG612	7/16"	EH 12 10 60	
DO697RG614	7/16"	EH 14 10 60	
DO697RG617	7/16"	EH 17 10 60	

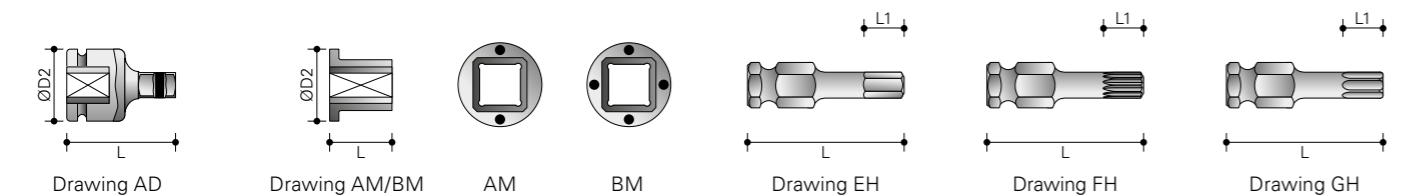
TRIPLE SQUARE BITS - 7/16"
XZN-BITS - 7/16"
EMBOUS CARRE TRIPLE - 7/16"

Type	Drawing	L1 mm	L mm
Metrical · Metrisch · Métriques			
DO698JG110	7/16"	FH M10 9 60	

INTERNAL TORX® BITS - 7/16" DRIVE
6-KANT-TORX®-INNEN-BITS - 7/16"
EMBOUS TORX® INTERIEURE - 7/16"

Type	Drawing	L1 mm	L mm
DO697LG130	7/16"	GH T30 3,8 60	
DO697LG140	7/16"	GH T40 3,8 60	
DO697LG145	7/16"	GH T45 4,3 60	
DO697LG150	7/16"	GH T50 5 60	
DO697LG155	7/16"	GH T55 5,5 60	
DO697LG160	7/16"	GH T60 8 60	

*Also available as set DO691121301, see page 58.



ADAPTORS

ADAPTER | ADAPTATEURS



QUICK CHANGE ADAPTORS
SCHNELLWECHSELHALTER
ADAPTATEURS À CHANGEMENT RAPIDE

Type	Drawing	D2 mm	L mm
DO69110C08	AQ	1/4"	1/4" 13 35
DO69110C12	AQ	1/4"	3/8" 13 42
DO69111C12	AQ	3/8"	3/8" 19 46
DO69111C16	AQ	3/8"	1/2" 22 60
DO69112C12	AQ	1/2"	3/8" 25 54
DO69112C16	AQ	1/2"	1/2" 25 60
DO69114C16	AQ	3/4"	1/2" 44 70
DO69114C24	AQ	3/4"	3/4" 44 78
DO69115C24	AQ	1"	3/4" 54 90
DO69115C32	AQ	1"	1" 54 100
DO69115C64	AQ	1"	3/4" 54 300

QUICK CHANGE BIT HOLDER
SCHNELLWECHSELBITHALTER
ADAPTATEURS À CHANGEMENT RAPIDE D'EMBOUT

Type	Drawing	D2 mm	L mm	Bit holder
SAE · Zoll · Pouce				
DO69111A08	BQ	3/8"	1/4" 19 45	E
DO69111A14	BQ	3/8"	7/16" 22 51	E
DO69112A14	BQ	1/2"	7/16" 25 54	E

BIT HOLDER E
WECHSELHALTER E
PORTE-EMBOUT E



BIT HOLDER F
WECHSELHALTER F
PORTE-EMBOUT F



QUICK CHANGE BIT HOLDER
SCHNELLWECHSELBITHALTER
ADAPTATEURS À CHANGEMENT RAPIDE D'EMBOUT

Type	Drawing	D2 mm	L mm	Bit holder
DO69121B08	CQ	3/8"	1/4" 19 33	F
DO69122B08	CQ	1/2"	1/4" 25 41	F

BIT HOLDER
ADAPTER ANTRIEBS-4-KANT AUF BITHALTER (6-KANT)
MANDRINS À CHOCS (6-PANS)

Type	Drawing	D1 mm	D2 mm	L mm	Bit holder
SAE · Zoll · Pouce					
DO69121008	DQ	3/8"	1/4" 12,5 19 32	F	
DO69121010	DQ	3/8"	5/16" 14 19 37	F	
DO69121016	DQ	3/8"	1/2" 19 19 37	F	
DO69122008	DQ	1/2"	1/4" 12,5 25 40	F	
DO69122010	DQ	1/2"	5/16" 15,5 25 40	F	
DO69122016	DQ	1/2"	1/2" 20 25 40	F	



PIN & RING

RING & STIFT & FEDERRING | JOINT TORIQUE CLAVETTE

Pin & ring | Ring & stift
Joint torique clavette



Retring | Federring
Anneau de retenue



PIN & RING | RING & STIFT | JOINT TORIQUE CLAVETTE

Drive	Type	Diameter socket (D2) see NOTE
1/4"	DO1014-0-000	13 mm
3/8"	DO1038-0-000	19 & 22 mm (set)
1/2"	DO1012-0-000	25 & 30 mm (set)
3/4"	DO1034-0-000	44 mm
	DO1100-0-000	54 mm
1"	DO1100-0-000	54 mm
	DO1100-0-086	86 mm
	DO1100-0-095	95 mm
1 1/2"	DO1112-0-000	86 mm
	DO1112-0-095	95 mm
	DO1112-0-127	127 mm
2 1/2"	DO2112-0-000	152 mm
	DO2112-0-127	127 mm

NOTE: These sizes are not those of the O-ring but are based on the D2 dimensions of the socket.
HINWEIS: Diese Größen sind nicht das Maß des o-rings aber der D2-Dimensionen von der Kraftsteckschlüssel.
NOTE: Ces dimensions ne sont pas la taille du joint torique, mais sont basés sur les dimensions D2 de la douille.

RETRING | FEDERRING | ANNEAU DE RETENUE

Type	D2 mm	
DO10032S	36,5	3/4"
DO18708S	44,5	3/4"
DO18715S	53,9	3/4" & 1"
DO10008S	44,5	1"
DO10021S	76,2	1 1/2"
DO10025S	85,7	1 1/2"



STEP · SCHRITT · ÉTAPE 1
Place socket retainer over square driver. Place socket on square driver aligning retention holes. Hold center pin of retainer between thumb and index finger, and insert it into the retention holes.

Setzen Sie den Federring über den Antriebsvierkant. Setzen Sie die Kraftstecknuss in Richtung der Haltelöcher. Halten Sie den Mittelstift des Federrings zwischen Daumen und Zeigefinger und stecken ihn durch das Halteloch.

Placez l'anneau de retenue sur le carré d'entraînement. Mettez la douille sur le carré en alignant les trous de retenue.



STEP · SCHRITT · ÉTAPE 2
Push center pin of socket retainer all the way in. Stecken Sie den Mittelstift ganz durch. Prenez la tige de retenue entre le pouce et l'index et entrez la au travers des trous.



STEP · SCHRITT · ÉTAPE 3
Pull O-ring of socket retainer up into groove socket. Ziehen Sie den O-Ring des Federrings hoch in die Nut des Kraftsteckschlüssels. Tirer le joint torique maintenant à l'endroit désiré.

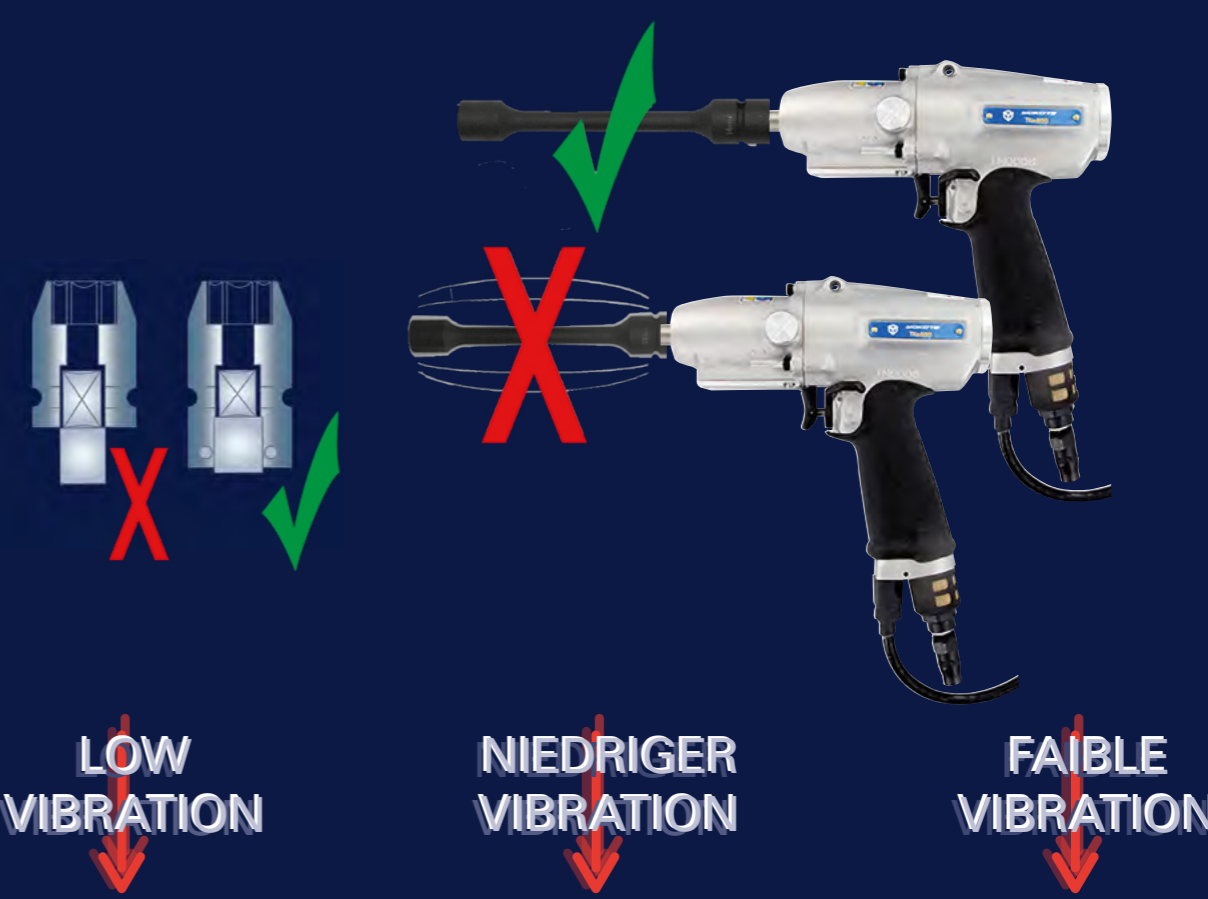
SLEEVE DRIVE IMPACT SOCKET

SPINDELGEFÜHRTE STECKSCHLÜSSEL | DOUILLES GUIDÉES

Sleeve drive impact sockets have been developed for us by ACTION. Sleeve drive sockets improve the quality of a joint tightened with an impulse wrench. They minimize the play between the socket and the tool thus reducing 'wobble' and stabilizing the torque setting. The use of sleeve drive sockets is not only of benefit to the actual joint but it also reduces vibration to the tool and operator, reduces noise and prevents fast wearing of the tool.

Kraftsteckschlüssel mit Spindel-führung wurden auf unseren Wunsch durch Action entwickelt, um die Qualität der Schraub-verbinding mit Impulsschraubern zu verbessern. Spindelgeführte Steckschlüssel haben ein minimales Spiel zwischen Kraftsteckschlüssel und Antriebsspindel. Dadurch wird das 'Wackeln' reduziert und die Drehmomentverluste werden geringer. Der Einsatz von spindel-geführten Steckschlüsseln bietet nicht nur Vorteile für die Verschraubung, sondern vermindert auch den Geräuschpegel und Verschleiß sowie die Vibration der Maschine für den Anwender.

Les douilles guidées ont été développées par Action à la demande de Yokota pour améliorer la qualité d'un assemblage vissé avec des visseuses à impulsions. Les douilles guidées minimisent le jeu entre la douille et la visseuse réduisant ainsi l'oscillation et stabilisant le couple réglé. L'utilisation des douilles guidées améliore la qualité d'assemblage et réduit aussi la vibration dans la visseuse et dans la main de l'opérateur. On note également une réduction du bruit et de l'usure de l'outil. Des douilles usées sont la cause de perte de puissance, usure du carré d'entraînement de l'outil et augmentation des vibrations et bruits pour l'opérateur. Remplacer vos douilles usées à temps.



SLEEVE DRIVE IMPACT SOCKETS GUARANTEE:

- Reduced vibration
- Accurate torque
- Noise reduction
- Less wear

SPINDELGEFÜHRTE KRAFTSTECKSCHLÜSSEL GARANTIEREN:

- Verbesserung des Drehmoments
- Reduzierte Vibration
- Reduzierten Geräuschpegel
- Reduzierten Verschleiß

LES DOUILLES GUIDÉES GARANTISSENT :

- Amélioration du couple
- Réduction des vibrations
- Niveau de bruit réduit
- Usure réduite

3/8" SLEEVE DRIVE

SPINDELGEFÜHRTE STECKSCHLÜSSEL | DOUILLES GUIDÉES

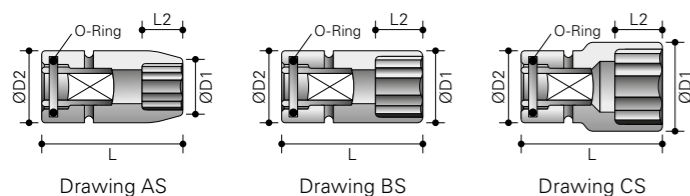


6-POINT NORMAL 6-KANT NORMAL 6-PANS NORMALE

Type	Drawing	D1 mm	D2 mm	L mm	L2 mm	
Metrical · Metrisch · Métriques						
DO60910006	6	AS	11	19	43	5
DO60910008	8	AS	13	19	43	7
DO60910009	9	AS	15	19	43	7
DO60910010	10	AS	16	19	43	8
DO60910011	11	AS	17,5	19	43	9
DO60910012	12	BS	19	19	43	9
DO60910013	13	AS	20	22	43	9
DO60910014	14	AS	21	22	43	9
DO60910015	15	BS	22	22	43	11
DO60910016	16	CS	24	22	43	11
DO60910017	17	CS	25	22	43	11
DO60910018	18	CS	26	22	43	11
DO60910019	19	CS	27,5	22	43	11
DO60910021	21	CS	30	22	43	13

6-POINT MAGNETIC 6-KANT NORMAL MAGNETISCH 6-PANS NORMALE MAGNÉTIQUE

Type	Drawing	D1 mm	D2 mm	L mm	L2 mm	
Metrical · Metrisch · Métriques						
DO6091A006	6	AS	11	19	43	5
DO6091A007	7	AS	12	19	43	5
DO6091A008	8	AS	13	19	43	7
DO6091A009	9	AS	15	19	43	7
DO6091A010	10	AS	16	19	43	8
DO6091A011	11	AS	17,5	19	43	9
DO6091A012	12	BS	18,5	19	43	9
DO6091A013	13	AS	20	22	43	9
DO6091A014	14	AS	21	22	43	9
DO6091A016	16	CS	24	22	43	11
DO6091A017	17	CS	25	22	43	11
DO6091A018	18	CS	26	22	43	11
DO6091A019	19	CS	27	22	43	11
DO6091A020	20	CS	28	22	43	13
DO6091A021	21	CS	30	22	43	13
DO6091A022	22	CS	31	22	50	13
DO6091A023	23	CS	32	22	50	13
DO6091A024	24	CS	34	22	50	13
DO6091A025	25	CS	35	22	50	13
DO6091A026	26	CS	36	22	50	13
DO6091A027	27	CS	38	22	50	13



6-POINT LONG 6-KANT LANG 6-PANS LONGUE

Type	Drawing	D1 mm	D2 mm	L mm	L2 mm	
Metrical · Metrisch · Métriques						
DO60913006	6	DS	10,5	22	100	4
DO60913008	8	DS	12,5	22	100	8
DO60913010	10	DS	15	22	100	8
DO60913012	12	DS	18	22	100	9
DO60913013	13	DS	19	22	100	9
DO60913014	14	DS	20	22	100	9
DO60913015	15	DS	21	22	100	11
DO60913016	16	DS	22,5	22	100	11
DO60913017	17	DS	24	22	100	11
DO60914006	6	DS	10,5	22	150	4
DO60914008	8	DS	12,5	22	150	8
DO60914010	10	DS	15	22	150	8
DO60914012	12	DS	18	22	150	9
DO60914013	13	DS	19	22	150	9
DO60914014	14	DS	20	22	150	9
DO60914015	15	DS	21	22	150	11
DO60914016	16	DS	22,5	22	150	11
DO60914017	17	DS	24	22	150	11
DO60915006	6	DS	10,5	22	200	4
DO60915008	8	DS	12,5	22	200	8
DO60915010	10	DS	15	22	200	8
DO60915012	12	DS	18	22	200	9
DO60915013	13	DS	19	22	200	9
DO60915014	14	DS	20	22	200	9
DO60915015	15	DS	21	22	200	11
DO60915016	16	DS	22,5	22	200	11
DO60915017	17	DS	24	22	200	11
DO60915019	19	DS	27	22	200	11

6-POINT MAGNETIC LONG 6-KANT LANG MAGNETISCH 6-PANS LONGUE MAGNÉTIQUE

Type	Drawing	D1 mm	D2 mm	L mm	L2 mm	
Metrical · Metrisch · Métriques						
DO6091P006	6	DS	11	19	100	3
DO6091P007	7	DS	12	19	100	3
DO6091P008	8	DS	13	19	100	4
DO6091P009	9	DS	15	19	100	4
DO6091P010	10	DS	16	19	100	4
DO6091P011	11	DS	17,5	19	100	5
DO6091P012	12	DS	18,5	19	100	5
DO6091P013	13	DS	20	22	100	6
DO6091P014	14	DS	21	22	100	6
DO6091P015	15	DS	22	22	100	7
DO6091P016	16	DS	24	22	100	7
DO6091P017	17	DS	25	22	100	7
DO6091R008	8	DS	13	19	150	4
DO6091R010	10	DS	16	19	150	4
DO6091R011	11	DS	17,5	19	150	5

3/8" SLEEVE DRIVE

SPINDELGEFÜHRTE STECKSCHLÜSSEL | DOUILLES GUIDÉES



6-POINT LONG MAGNETIC (CONTINUED) 6-KANT LANG MAGNETISCH (FORTSETZUNG) 6-PANS LONGUE MAGNÉTIQUE (SUITE)

Type	Drawing	D1 mm	D2 mm	L mm	L2 mm	
Metrical · Metrisch · Métriques						
DO6091R012	12	DS	18,5	19	150	5
DO6091R013	13	DS	20	22	150	6
DO6091R014	14	DS	21	22	150	6
DO6091R015	15	DS	22	22	150	7
DO6091R016	16	DS	24	22	150	7
DO6091R017	17	DS	25	22	150	7
DO6091T008	8	DS	13	19	200	4
DO6091T009	9	DS	15	19	200	4
DO6091T010	10	DS	16	19	200	4
DO6091T012	12	DS	18,5	19	200	5
DO6091T013	13	DS	20	22	200	6
DO6091T014	14	DS	21	22	200	6
DO6091T015	15	DS	22	22	200	7

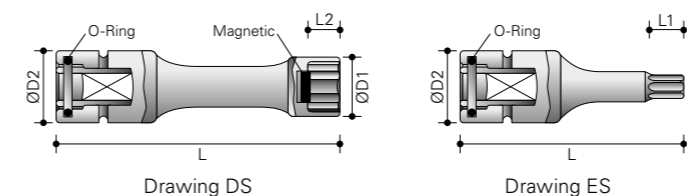
6-POINT DEEP MAGNETIC 6-KANT TIEF MAGNETISCH 6-PANS PROFONDE MAGNÉTIQUE

Type	Drawing	D1 mm	D2 mm	L mm	L2 mm	
Metrical · Metrisch · Métriques						
DO6091Q010	10	FS	16	19	100	5
DO6091Q012	12	FS	18,5	19	100	6
DO6091Q013	13	FS	20	22	100	6
DO6091Q014	14	FS	21	22	100	6
DO6091Q016	16	FS	24	22	100	7

TORX® INTERNAL TORX® INNEN TORX® INTÉRIEURE

Type	Drawing	D2 mm	L mm	L1 mm	-	
DO68811009	T9	ES	22	75	2	-
DO68811010	T10	ES	22	75	2,8	-
DO68811015	T15	ES	22	75	2,8	-
DO68811020	T20	ES	22	75	2,8	-
DO68811025	T25	ES	22	75	3	-
DO68811027	T27	ES	22	75	3	-
DO68811030	T30	ES	22	75	3,8	-
DO68811040	T40	ES	22	75	3,8	-
DO68811045	T45	ES	22	75	4,3	-
DO68811047	T47	ES	22	75	5	-
DO68811050	T50	ES	22	75	5	-
DO68811055	T55	ES	22	75	5	-

Torx® is a trademark of Textron.



TORX® EXTERNAL TORX® AUSSEN TORX® EXTÉRIEURE

Type	Drawing	D1 mm	D2 mm	L mm	L2 mm	
DO66910005	E5	AS	8	19	43	4,5
DO66910006	E6	AS	9	19	43	5,0
DO66910007	E7	AS	9,5	19	43	6,0
DO66910008	E8	AS	11	19	43	6,5
DO66910010	E10	AS	13	19	43	7,5
DO66910011	E11	AS	14	19	43	8,0
DO66910012	E12	AS	15,5	19	43	8,5
DO66910014	E14	AS	17,5	22	43	10,0
DO66910016	E16	AS	18,5	22	43	11,0

Torx® is a trademark of Textron.

HEX DRIVER (INBUS) AUSSEN-6-KANT (INBUS) EMPREINTE 6-PANS (INBUS)

Type	Drawing	D2 mm	L mm	L1 mm	-	
Metrical · Metrisch · Métriques						
DO68916003	3	ES	22	75	11	-
DO68916004	4	ES	22	75	11	-
DO68916005	5	ES	22	75	11	-
DO68916006	6	ES	22	75	11	-
DO68916007	7	ES	22	75	16	-
DO68916008	8	ES	22	75	16	-
DO68916009	9	ES	22	75	16	-
DO68916010	10	ES	22	75	16	-
DO68916011	11	ES	22	75	16	-
DO68916012	12	ES	22	75	16	-
DO68916013	13	ES	22	75	16	-
DO68916014	14	ES	22	75	16	-
DO68916015	15	ES	22	75	16	-
DO68916016	16	ES	22	75	16	-

STUD BOLT SETTERS | STEHBOLZENSETZER | PRISE GOUJON

Type	Size	D1 mm	D2 mm	L mm
DO66A10062	M6 x 1	12,5	22	50
DO66A10083	M8 x 1,25	15	22	50
DO66A10104	M10 x 1,5	17	22	50

1/2" SLEEVE DRIVE

SPINDELGEFÜHRTE STECKSCHLÜSSEL | DOUILLES GUIDÉES



ACTION

6-POINT NORMAL 6-KANT NORMAL 6-PANS NORMALE

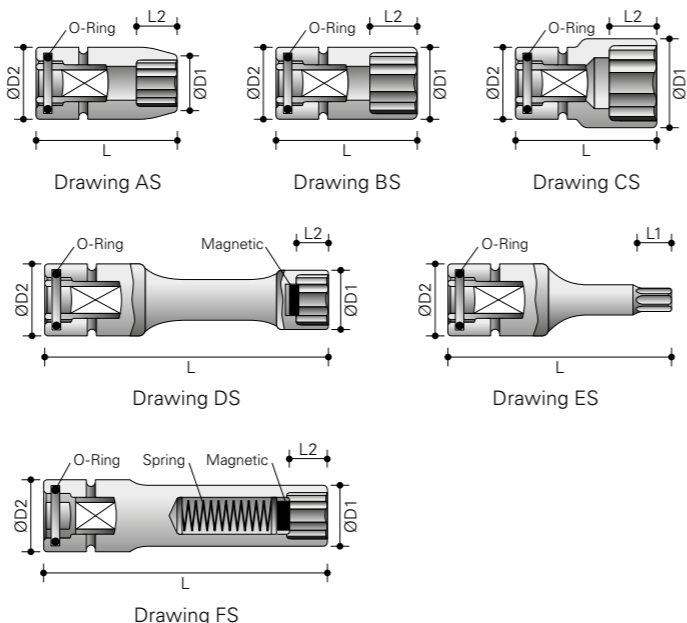
Type	Drawing	D1 mm	D2 mm	L mm	L2 mm
Metrical · Metrisch · Métriques					
DO60920012	12 AS	20	25	52	12
DO60920013	13 AS	21	25	52	12
DO60920014	14 AS	22,5	25	52	12
DO60920015	15 AS	23,7	30	52	12
DO60920016	16 AS	25	30	52	12
DO60920017	17 AS	26	30	52	12
DO60920018	18 AS	27,5	30	52	12
DO60920019	19 AS	28,7	30	52	12
DO60920021	21 BS	30	30	52	12
DO60920022	22 CS	32	30	52	12
DO60920023	23 CS	32	30	52	12
DO60920024	24 CS	35	30	52	12
DO60920025	25 CS	36	30	57	12
DO60920027	27 CS	39	30	57	12
DO60920030	30 CS	42	30	62	12
DO60920032	32 CS	44	30	62	12

6-POINT LONG 6-KANT LANG 6-PANS LONGUE

Type	Drawing	D1 mm	D2 mm	L mm	L2 mm
Metrical · Metrisch · Métriques					
DO60923010	10 DS	17	25	100	12
DO60923012	12 DS	19,5	25	100	12
DO60923013	13 DS	20,5	25	100	12
DO60923014	14 DS	21,5	25	100	12
DO60923015	15 DS	22,5	25	100	12
DO60923017	17 DS	25	25	100	13
DO60923019	19 DS	28	25	100	13
DO60924010	10 DS	17	25	150	12
DO60924012	12 DS	19,5	25	150	12
DO60924013	13 DS	20,5	25	150	12
DO60924014	14 DS	21,5	25	150	12
DO60924015	15 DS	22,5	25	150	12
DO60924017	17 DS	25	25	150	13
DO60924019	19 DS	28	25	150	13
DO60925010	10 DS	17	25	200	12
DO60925012	12 DS	19,5	25	200	12
DO60925013	13 DS	20,5	25	200	12
DO60925014	14 DS	21,5	25	200	12
DO60925015	15 DS	22,5	25	200	12
DO60925017	17 DS	25	25	200	13
DO60925019	19 DS	28	25	200	13

6-POINT LONG MAGNETIC 6-KANT LANG MAGNETISCH 6-PANS LONGUE MAGNÉTIQUE

Type	Drawing	D1 mm	D2 mm	L mm	L2 mm
Metrical · Metrisch · Métriques					
DO6092P010	10 DS	17,5	25	100	4
DO6092P011	11 DS	18,5	25	100	5
DO6092P012	12 DS	20	25	100	5
DO6092P013	13 DS	21	25	100	6
DO6092P014	14 DS	22,5	25	100	6
DO6092P015	15 DS	23,5	30	100	7
DO6092P016	16 DS	25	30	100	7
DO6092P017	17 DS	26	30	100	7
DO6092P018	18 DS	27,5	30	100	8
DO6092P019	19 DS	28,5	30	100	8
DO6092R010	10 DS	17,5	25	150	12
DO6092R011	11 DS	18,5	25	150	12
DO6092R012	12 DS	20	25	150	12
DO6092R013	13 DS	21	25	150	12
DO6092R014	14 DS	22,5	25	150	12
DO6092R015	15 DS	23,5	30	150	12
DO6092R016	16 DS	25	30	150	13
DO6092R017	17 DS	26	30	150	13
DO6092R018	18 DS	27,5	30	150	13
DO6092R019	19 DS	28,5	30	150	13
DO6092T010	10 DS	17,5	25	200	12
DO6092T011	11 DS	18,5	25	200	12
DO6092T012	12 DS	20	25	200	12
DO6092T013	13 DS	21	25	200	12
DO6092T014	14 DS	22,5	25	200	12
DO6092T015	15 DS	23,5	30	200	12
DO6092T016	16 DS	25	30	200	13
DO6092T017	17 DS	26	30	200	13
DO6092T018	18 DS	27,5	30	200	13
DO6092T019	19 DS	28,5	30	200	13



1/2" SLEEVE DRIVE

SPINDELGEFÜHRTE STECKSCHLÜSSEL | DOUILLES GUIDÉES



ACTION

6-POINT NORMAL MAGNETIC 6-KANT NORMAL MAGNETISCH 6-PANS NORMALE MAGNÉTIQUE

Type	Drawing	D1 mm	D2 mm	L mm	L2 mm
Metrical · Metrisch · Métriques					
DO6092A006	6 AS	13	25	52	5
DO6092A007	7 AS	14	25	52	5
DO6092A008	8 AS	15	25	52	7
DO6092A009	9 AS	16	25	52	7
DO6092A010	10 AS	17,5	25	52	8
DO6092A011	11 AS	18,5	25	52	9
DO6092A012	12 AS	20	25	52	12
DO6092A013	13 AS	21	25	52	12
DO6092A014	14 AS	22,5	25	52	12
DO6092A015	15 AS	23,5	30	52	12
DO6092A016	16 AS	25	30	52	12
DO6092A017	17 AS	26	30	52	12
DO6092A018	18 AS	27,5	30	52	12
DO6092A019	19 AS	28,5	30	52	12
DO6092A020	20 BS	30	30	52	12
DO6092A021	21 CS	31	30	52	12
DO6092A022	22 CS	32	30	52	12
DO6092A023	23 CS	34	30	52	12
DO6092A024	24 CS	35	30	52	12
DO6092A025	25 CS	36	30	57	12
DO6092A026	26 CS	38	30	57	12
DO6092A027	27 CS	38,5	30	57	12

6-POINT DEEP MAGNETIC 6-KANT TIEF MAGNETISCH 6-PANS ROFONDE MAGNÉTIQUE

Type	Drawing	D1 mm	D2 mm	L mm	L2 mm
Metrical · Metrisch · Métriques					
DO6092Q010	10 FS	17,5	25	100	5
DO6092Q013	13 FS	21	25	100	6
DO6092Q016	16 FS	25	30	100	7
DO6092Q017	17 FS	26	30	100	7
DO6092Q019	19 FS	28,5	30	100	8

TORX® EXTERNAL TORX® AUSSEN TORX® EXTÉRIEURE

Type	Drawing	D1 mm	D2 mm	L mm	L2 mm
DO66920010	E10 AS	14	25	52	7,5
DO66920011	E11 AS	15	25	52	8
DO66920012	E12 AS	16	25	52	8,5
DO66920014	E14 AS	18	25	52	10
DO66920016	E16 AS	20	25	52	11
DO66920018	E18 AS	22	25	52	12,5
DO66920020	E20 AS	25	30	52	14
DO66920022	E22 AS	27	30	52	15
DO66920024	E24 AS	29	30	52	16,5

Torx® is a trademark of Textron.

TORX® INTERNAL TORX® INNEN TORX® INTÉRIEURE

Type	Drawing	D2 mm	L mm	L1 mm	-
DO68821020	T20 ES	25	75	2,8	-
DO68821025	T25 ES	25	75	3	-
DO68821027	T27 ES	25	75	3	-
DO68821030	T30 ES	25	75	3,8	-
DO68821040	T40 ES	25	75	3,8	-
DO68821045	T45 ES	25	75	4,3	-
DO68821047	T47 ES	25	75	5	-
DO68821050	T50 ES	25	75	5	-
DO68821055	T55 ES	25	75	5,5	-
DO68821060	T60 ES	25	75	8	-
DO68821070	T70 FS	25	75	9,4	-
DO68821080	T80 ES	25	75	10,5	-
DO68821090	T90 ES	25	75	11,8	-
DO68821100	T100 ES	25	75	13,1	-

Torx® is a trademark of Textron.

HEX DRIVER AUSSEN-6-KANT (INBUS) EMPREINTE 6-PANS (INBUS)

Type	Drawing	D2 mm	L mm	L1 mm	-
Metrical · Metrisch · Métriques					
DO68925003	3 ES	25	75	11	-
DO68925004	4 ES	25	75	11	-
DO68925005	5 ES	25	75	15	-
DO68925006	6 ES	25	75	15	-
DO68925007	7 ES	25	75	20	-
DO68925008	8 ES	25	75	25	-
DO68925009	9 ES	25	75	25	-
DO68925010	10 FS	25	75	25	-
DO68925011	11 ES	25	75	25	-
DO68925012	12 ES	25	75	25	-
DO68925013	13 ES	25	75	25	-
DO68925014	14 ES	25	75	25	-
DO68925015	15 ES	25	75	25	-
DO68925016	16 ES	25	75	25	-
DO68925017	17 ES	25	75	25	-
DO68925018	18 ES	25	75	25	-
DO68925019	19 ES	25	75	25	-

STUD BOLT SETTERS | STEHBOLZENSETZER | PRISE GOUJON

Type	Size	D1 mm	D2 mm	L mm
DO66A21062	M6 x 1	13	25	75
DO66A21104	M10 x 1,5	17	25	75
DO66A21125	M12 x 1,75	19	25	75
DO66A21146	M14 x 2	22	25	75
DO66A21166	M16 x 2	27	30	75

3/4" SLEEVE DRIVE

SPINDELGEFÜHRTE STECKSCHLÜSSEL | DOUILLES GUIDÉES



6-POINT NORMAL 6-KANT NORMAL 6-PANS NORMALE

Type	mm	Drawing	D1 mm	D2 mm	L mm	L2 mm
Metrical · Metrisch · Métriques						
DO60940017	17	AS	31	44	65	12
DO60940018	18	AS	32	44	65	12
DO60940019	19	AS	33	44	65	14
DO60940021	21	AS	35	44	65	16
DO60940022	22	AS	37	44	65	16
DO60940023	23	AS	38	44	65	16
DO60940024	24	AS	39	44	65	16
DO60940026	26	AS	41	44	65	16
DO60940027	27	AS	43	44	65	16
DO60940028	28	BS	44	44	68	20
DO60940029	29	CS	45	44	68	20
DO60940030	30	CS	47	44	68	20
DO60940032	32	CS	49	44	70	20
DO60940033	33	CS	51	44	70	20
DO60940034	34	CS	52	44	70	20
DO60940035	35	CS	53	44	70	20
DO60940036	36	CS	54	44	70	20
DO60940038	38	CS	57	44	72	22
DO60940041	41	CS	60	44	72	22
DO60940046	46	CS	67	54	77	23
DO60940050	50	CS	71	54	77	23

HEX DRIVER (INBUS) AUSSEN-6-KANT (INBUS) EMPREINTE 6-PANS (INBUS)

Type	mm	Drawing	D2 mm	L mm	L1 mm	-
Metrical · Metrisch · Métriques						
DO68945010	10	ES	44	100	20	-
DO68945012	12	ES	44	100	20	-
DO68945014	14	ES	44	100	20	-
DO68945016	16	ES	44	100	20	-
DO68945017	17	ES	44	100	20	-
DO68945019	19	ES	44	100	20	-
DO68945022	22	ES	44	100	20	-
DO68945024	24	ES	44	100	20	-
DO68945027	27	ES	44	100	20	-
DO68945030	30	ES	44	100	20	-
DO68945032	32	ES	44	100	20	-
DO68945033	33	ES	44	100	20	-
DO68945036	36	ES	44	100	20	-
DO68945038	38	ES	44	100	20	-

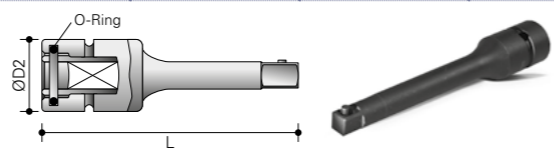
TORX® EXTERNAL TORX® AUSSEN TORX® EXTÉRIEURE

Type	mm	Drawing	D1 mm	D2 mm	L mm	L2 mm
DO66940018	E18	AS	26	44	65	12,5
DO66940020	E20	AS	28	44	65	14
DO66940022	E22	AS	31	44	65	15
DO66940024	E24	AS	33	44	65	16,5

Torx® is a trademark of Textron.

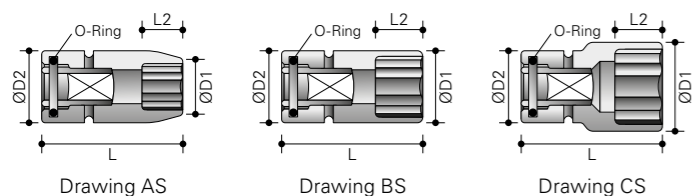
EXTENSIONS | VERLÄNGERUNGEN | PROLONGATEURS

Type	mm	L mm	D2 mm
DO64614075	3/8"	75	22
DO64614125	3/8"	125	22
DO64614250	3/8"	250	22
DO64624075	1/2"	75	25
DO64624125	1/2"	125	25
DO64624175	1/2"	175	25
DO64624250	1/2"	250	25
DO64644175	3/4"	175	44
DO64644250	3/4"	250	44
DO64644330	3/4"	330	44



6-POINT MAGNETIC 6-KANT MAGNETISCH 6-PANS MAGNÉTIQUE

Type	mm	Drawing	D1 mm	D2 mm	L mm	L2 mm
Metrical · Metrisch · Métriques						
DO6094A013	13	AS	24,5	44	65	12
DO6094A014	14	AS	25,5	44	65	12
DO6094A015	15	AS	27	44	65	12
DO6094A016	16	AS	28	44	65	12
DO6094A017	17	AS	30	44	65	12
DO6094A018	18	AS	31	44	65	12
DO6094A019	19	AS	32	44	65	14
DO6094A020	20	AS	34	44	68	14
DO6094A021	21	AS	35	44	68	16
DO6094A022	22	AS	37	44	68	16
DO6094A023	23	AS	38	44	68	16
DO6094A024	24	AS	39	44	68	16
DO6094A025	25	AS	41	44	69	16
DO6094A026	26	AS	42	44	69	16
DO6094A027	27	AS	43	44	69	16



SLEEVE DRIVE

SPINDELGEFÜHRTE STECKSCHLÜSSEL | DOUILLES GUIDÉES



SLEEVE DRIVE QUICK CHANGE ADAPTORS SPINDELGEFÜHRTE SCHNELLWECHSELHALTER ADAPTATEURS À CHANGEMENT RAPIDE, DOUILLE GUIDÉE

Type	mm	D2 mm	L mm	-
DO69151112	3/8"	3/8"	19	75
DO69151212	3/8"	3/8"	19	100
DO69151116	3/8"	1/2"	20	80
DO69152112	1/2"	3/8"	25	75
DO69152216	1/2"	1/2"	25	100
DO69154116	3/4"	1/2"	44	90
DO69154324	3/4"	3/4"	44	125

SLEEVE DRIVE BIT HOLDERS SPINDELGEFÜHRTE BITHALTER DOUILLES GUIDÉES ADAPTATEURS EMBOUT

Type	mm	D2 mm	L mm	-
DO69111E08	3/8"	1/4"	22	52
DO69111E14*	3/8"	7/16"	22	62
DO69112E08	1/2"	1/4"	25	60
DO69112E14*	1/2"	7/16"	25	70
DO69114E14*	3/4"	7/16"	44	80

* See page 48 for 7/16" bit holders.
* 7/16" Bits s.a. Seite 48.
* Pour embouts 7/16" voir page 48.

SETS


DO605121301 3/8" 



13 IMPACT SOCKETS, 6-POINT, DEEP
7-8-9-10-11-12-13-14-15-16-17-18-19 mm

13 KRAFTSTECKSCHLÜSSEL, 6-KANT, TIEF
7-8-9-10-11-12-13-14-15-16-17-18-19 mm

13 DOUILLES, 6-PANS, PROFONDE
7-8-9-10-11-12-13-14-15-16-17-18-19 mm

DO611101301 3/8" 



13 IMPACT SOCKETS, 6-POINT, THIN WALL
7-8-9-10-11-12-13-14-15-16-17-18-19 mm

13 KRAFTSTECKSCHLÜSSEL, 6-KANT, DÜNNWANDIG
7-8-9-10-11-12-13-14-15-16-17-18-19 mm

13 DOUILLES, 6-PANS, PAROI MINCE
7-8-9-10-11-12-13-14-15-16-17-18-19 mm


DO0012-0-000S 1/2" 



10 IMPACT SOCKETS, 6-POINT, NORMAL
9-10-11-13-14-17-19-22-24-27 mm

10 KRAFTSTECKSCHLÜSSEL, 6-KANT, NORMALE AUSFÜHRUNG
9-10-11-13-14-17-19-22-24-27 mm

10 DOUILLES, 6-PANS, NORMALES
9-10-11-13-14-17-19-22-24-27 mm

DO648260901 1/2" 



9 IMPACT SOCKETS, HEX DRIVER
4-5-6-8-10-12-14-17-19mm

9 INBUSKRAFTSTECKSCHLÜSSEL
4-5-6-8-10-12-14-17-19mm

9 DOUILLES EMPREINTE 6-PANS (INBUS)
4-5-6-8-10-12-14-17-19mm


DO691121301 1/2"  



1 QUICK CHANGE ADAPTOR, 1/2" SQUARE DRIVE, 7/16" HEX. HEX INTERNAL TORX® BITS 7/16"
T30-T40-T45-T50-T55-T60
Hex driver bits - 7/16": 6-8-10-12-14-17 mm

13-TEILIGER SATZ 1/2" ANTRIEBSVIERKANT SCHNELLWECHSLER & 7/16" SECHSKANTBITS
6 Stück 7/16" Sechskant Torx® Int. Bits
T30-T40-T45-T50-T55-T60
6 Stück 7/16" Sechskant inbusbits:
6-8-10-12-14-17 mm

1 PIECE ADAPTATEUR RAPIDE, 1/2" CARRÉ D'ENTRAIN., 7/16" HEX.
6 pieces embout 7/16"
T30-T40-T45-T50-T55-T60
6 Hex inbus bits- 7/16": 6-8-10-12-14-17 mm

DO605222601 1/2" 




26 IMPACT SOCKETS, 6-POINT, DEEP
10-11-12-13-14-15-16-17-18-19-20-21-22-23-24-25-26-27-28-29-30-32-33-34-35-36 mm

26 KRAFTSTECKSCHLÜSSEL, 6-KANT, TIEF
10-11-12-13-14-15-16-17-18-19-20-21-22-23-24-25-26-27-28-29-30-32-33-34-35-36 mm

26 DOUILLES, 6-PANS, PROFONDE
10-11-12-13-14-15-16-17-18-19-20-21-22-23-24-25-26-27-28-29-30-32-33-34-35-36 mm

SETS


DO605202602 1/2" 



26 IMPACT SOCKETS, 6-POINT
10-11-12-13-14-15-16-17-18-19-20-21-22-23-24-25-26-27-28-29-30-32-33-34-35-36 mm

26 KRAFTSTECKSCHLÜSSEL, 6-KANT
10-11-12-13-14-15-16-17-18-19-20-21-22-23-24-25-26-27-28-29-30-32-33-34-35-36 mm

26 DOUILLES, 6-PANS
10-11-12-13-14-15-16-17-18-19-20-21-22-23-24-25-26-27-28-29-30-32-33-34-35-36 mm


DO69523108 1/2" 



10 IMPACT SOCKETS, 6-POINT, DEEP
10-11-13-14-17-19-21-22-24-27 mm

10 KRAFTSTECKSCHLÜSSEL, 6-KANT, TIEF
10-11-13-14-17-19-21-22-24-27 mm

10 DOUILLES, 6-PANS, PROFONDE
10-11-13-14-17-19-21-22-24-27 mm

DO652260701 1/2" 



7 PCS 1/2" DRIVE IMPACT TRIPLE SQUARE DRIVER SET
M5-M6-M8-M10-M12-M14-M16

Particularly suitable for use in car workshops geared to service Volkswagen brand cars.

7-TEILIGER SATZ KRAFTSTECKSCHLÜSSEL 1/2" ANTRIEBSVIERKANT - XZN BIT
M5-M6-M8-M10-M12-M14-M16

Sehr gut geeignet für Werkstatt und Servicezentren von Pkw aus dem Volkswagen-Konzern.

7 DOUILLES, TRIPLÉ CARRE EMBOUT
M5-M6-M8-M10-M12-M14-M16

Très approprié pour les garages et les centres de services de voitures particulières du groupe Volkswagen.


DO658272601 1/2" 



26 IMPACT SOCKETS, 12-POINT, DEEP
10-11-12-13-14-15-16-17-18-19-20-21-22-23-24-25-26-27-28-29-30-32-33-34-35-36 mm

26 KRAFTSTECKSCHLÜSSEL, 12-KANT, TIEF
10-11-12-13-14-15-16-17-18-19-20-21-22-23-24-25-26-27-28-29-30-32-33-34-35-36 mm

26 DOUILLES, 12-PANS, PROFONDE
10-11-12-13-14-15-16-17-18-19-20-21-22-23-24-25-26-27-28-29-30-32-33-34-35-36 mm

DO61120310 1/2" 



3 IMPACT SOCKETS WITH PLASTIC STOP AND SLEEVE
blue 17 mm - yellow 19 mm - red 21 mm

3 KRAFTSTECKSCHLÜSSEL MIT KUNSTSTOFFANSCHLAG UND -HÜLSE
blau 17 mm - gelb 19 mm - rot 21 mm

3 DOUILLES AVEC BUTÉE ET MANCHON PLASTIQUE
bleu 17 mm - jaune 19 mm - rouge 21 mm

DO611260501 1/2" 



5 IMPACT SOCKETS WITH PLASTIC STOP AND SLEEVE
white 15 mm - blue 17 mm - yellow 19 mm - red 21 mm - green 22 mm

5 KRAFTSTECKSCHLÜSSEL MIT KUNSTSTOFFANSCHLAG UND -HÜLSE
weiß 15 mm - blau 17 mm - gelb 19 mm - rot 21 mm - grün 22 mm

5 DOUILLES AVEC BUTÉE ET MANCHON PLASTIQUE
blanc 15 mm - bleu 17 mm - jaune 19 mm - rouge 21 mm - vert 22 mm

SETS

SPECIAL SET FOR WHEEL LUG NUT REMOVER
SET KRAFTSTECKSCHLÜSSEL FÜR RADMUTTERSCHLOSS
JEU DE DOUILLES SPECIALES POUR BLOCAGE DE BOULON DE ROUE
 DO0012-0-286



7 IMPACT SOCKETS, NORMAL
 17 - 18,5 - 20 - 21,5 - 23 - 24,5 - 26 mm

7 KRAFTSTECKSCHLÜSSEL, NORMALE AUSFÜHRUNG
 17 - 18,5 - 20 - 21,5 - 23 - 24,5 - 26 mm

7 DOUILLES, NORMALES
 17 - 18,5 - 20 - 21,5 - 23 - 24,5 - 26 mm

APPLICATION

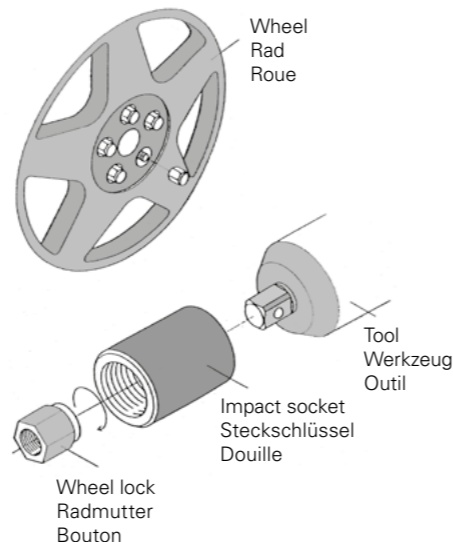
This wheel lug nut remover is used when it is discovered that the original key to remove your car wheel is lost. In order to remove the lock and the wheel, these sockets can be used. Proper use of the socket is to have at least three windings of thread of the socket gripping over the lock. In case any of the first three windings are already gripping, the next bigger size of socket should be chosen. When the correct size of socket is chosen, it can unlock up to four bolts.

VERWENDUNG

Die Verwendung der Radmuttereschlossentferner ist nur dann erforderlich, wenn der PKW-Fahrer zum Reifendienst geht und den Originalschlüssel vergessen hat. Um doch das Schloss entfernen zu können, werden diese Nüsse verwendet. Beim Aufstecken des Radmuttereschlossentferners beachten Sie, dass dieser mindestens 3 Gewindegänge tief im Schloss steckt, damit er genug fassen kann. Wenn der (konische) Steckschlüssel bereits nach einem Gewindegang greift, muss ein größerer Steckschlüssel gewählt werden. Wenn die Nuss mit richtiger Größe so verwendet wird, können bis zu 4 Rad-schlösser entfernt werden.

UTILISATION

Cette douille pour la dépose de boulons de roues est par exemple utilisée lorsque l'automobiliste découvre, en arrivant au garage, qu'il a oublié la douille antivol d'origine. Ces douilles sont utilisées pour pouvoir malgré tout retirer le boulon (et donc la roue). Lors de l'utilisation de la douille pour la dépose des boulons de roues, celle-ci doit faire au minimum trois tour autour du boulon antivol avant que le filetage n'accroche. Si le filetage accroche dès le premier tour, il convient de choisir une douille plus grande. Lorsque la bonne taille de douille est ainsi utilisée, les quatre boulons antivol peuvent être enlevés.



1/2"

SET MAGNETIC REDUCERS
SET MAGNETISCHE KRAFTNÜSSE MIT HÜLSEN
ADAPTATEURS MAGNÉTIQUE POUR DES DOUILLES À CHOCS
 DO698800401



4 PCS. MAGNETIC SLEEVE INSERT ADAPTORS
 1/4" female x 3/8" male
 3/8" female x 1/2" male
 1/2" female x 3/4" male
 3/4" female x 1" male

The magnetic sleeve adaptors allow the temporary use of bigger impact sockets on smaller tools. By means of the magnet changes of loosing the adaptor are reduced. Especially well suited for the service kit of a traveling mechanic, tasked with the servicing of heavy equipment.

4-TEILIGES SET MAGNETISCHE, REDUZIERENDE VERBINDUNGSTEILE FÜR KRAFTSTECKSCHLÜSSEL
 1/4" weiblich x 3/8" männlich
 3/8" weiblich x 1/2" männlich
 1/2" weiblich x 3/4" männlich
 3/4" weiblich x 1" männlich

Die reduzierende Hülse ermöglicht die Verwendung größerer Kraftsteckschlüssel auf kleinerem Schlagschrauber. Der Magnet sorgt dafür, dass der Adapter den Kraftsteckschlüssel hält. Dieses Set ist ideal für die Toolbox des reisenden Servicetechnikers, bei Wartung und Reparaturen an zum Beispiel schweren Baumaschinen.

JEU DE 4 ADAPTATEURS MAGNÉTIQUE POUR DES DOUILLES À CHOCS
 1/4" femelle x 3/8" mâle
 3/8" femelle x 1/2" mâle
 1/2" femelle x 3/4" mâle
 3/4" femelle x 1" mâle

Les adaptateurs magnétiques permettent d'utiliser temporairement des douilles plus grandes sur des machines plus petites. L'aimant permet à l'adaptateur de rester fixé à la douille. Ce set est indispensable dans la caisse à outils du mécanicien mobile qui doit par exemple entretenir et réparer du matériel lourd.

SETS

DO605401001

3/4"



10 IMPACT SOCKETS, 6-POINT, NORMAL
 21 - 22 - 24 - 27 - 30 - 32 - 33 - 36 - 41 - 46 mm

10 KRAFTSTECKSCHLÜSSEL, 6-KANT, NORMALE AUSFÜHRUNG
 21 - 22 - 24 - 27 - 30 - 32 - 33 - 36 - 41 - 46 mm

10 DOUILLES, 6-PANS, NORMALES
 21 - 22 - 24 - 27 - 30 - 32 - 33 - 36 - 41 - 46 mm

DO605421001

3/4"



10 IMPACT SOCKETS, 6-POINT, DEEP
 21 - 22 - 24 - 27 - 30 - 32 - 33 - 36 - 41 - 46 mm

10 KRAFTSTECKSCHLÜSSEL, 6-KANT, TIEF
 21 - 22 - 24 - 27 - 30 - 32 - 33 - 36 - 41 - 46 mm

10 DOUILLES, 6-PANS PROFONDE
 21 - 22 - 24 - 27 - 30 - 32 - 33 - 36 - 41 - 46 mm

DO0100-1-007

1"



7 IMPACT SOCKETS, 6-POINT, DEEP
 24 - 27 - 30 - 32 - 33 - 36 - 41 mm

7 KRAFTSTECKSCHLÜSSEL, 6-KANT, TIEF
 24 - 27 - 30 - 32 - 33 - 36 - 41 mm

7 DOUILLES, 6-PANS PROFONDE
 24 - 27 - 30 - 32 - 33 - 36 - 41 mm

TORQUE SOCKETS & SPECIALS

TORSIONSKRAFTSTECKSCHLÜSSEL & SPECIALS | BARRES LIMITEUR DE COUPLE & SPÉCIAUX

TORQUE SOCKETS | TORSIONSKRAFTSTECKSCHLÜSSEL | BARRES LIMITEUR DE COUPLE

1/2" 1"



Type 1/2"	C/P mm	Nm	Length Lange Longuer	Colour Farbe Couleur
DO68122D17	17	75	220	Green / Grün / Vert
DO68122L17	17	110	220	Red / Rot / Rouge
DO68122G19	19	90	220	Yellow / Gelb / Jaune
DO68122L19	19	110	220	Blue / Blau / Bleu
DO68122M19	19	135	220	Grey / Grau / Gris
DO68122E21	21	80	220	Black / Schwarz / Noir
DO68122L21	21	110	220	Brown / Braun / Brun

Type 1"	C/P mm	Nm	Length Lange Longuer
DO68552U23	23	250	305
DO68552W24	24	350	305
DO68552W27	27	350	305
DO68552Z27	27	450	305
DO68552Y29	29	400	305
DO68552B30	30	550	305
DO68552C30	30	600	305
DO68552A32	32	500	305
DO68552C32	32	600	305
DO68552F32	32	700	305
DO68552A33	33	500	305
DO68552C33	33	600	305
DO68552C36	36	600	305

WHEEL NUT SOCKET FOR SPECIAL MERCEDES WHEEL BOLTS. (1/2" x 17MM)
RADMUTTERNUSS FÜR RADMUTTERN VON MERCEDES (1/2" x 17MM)
BOULON POUR DE ROUE MERCEDES (1/2" x 17MM)

SPÉCIAL

DO6112P017



Includes rotating plastic sleeve and stop for protecting alloy wheels.

This special impact socket is suitable for: Mercedes C-Class / GLK (W204), E-Class (W211, W212, W207), SLK (W172), M-Class (W164, W166), CL-Class (W216), S-Class (W221, W222) et Maybach.

Inklusive drehbarer Kunststoffhülse und -anschlag für den Schutz von Leichtmetallrädern.

Diese Sondernuss ist entwickelt für Mercedes: C-Klasse / GLK (W204), E-Klasse (W211, W212, W207), SLK (W172), M-Klasse (W164, W166), CL-Klasse (W216), S-Klasse (W221, W222) und Maybach.

Inclus une gaine en plastique pivotante de guidage et d'arrêt pour la protection des jantes en alliage.

Cette douille à choc est spécifique pour les modèles suivants: Mercedes C-Class/GLK (W204), classe E (W211, W212, W207), SLK (W172), M-Class (W164, W166), CL-classe (W216), S-classe (W221, L222) et Maybach.



